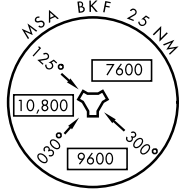
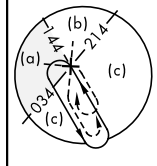
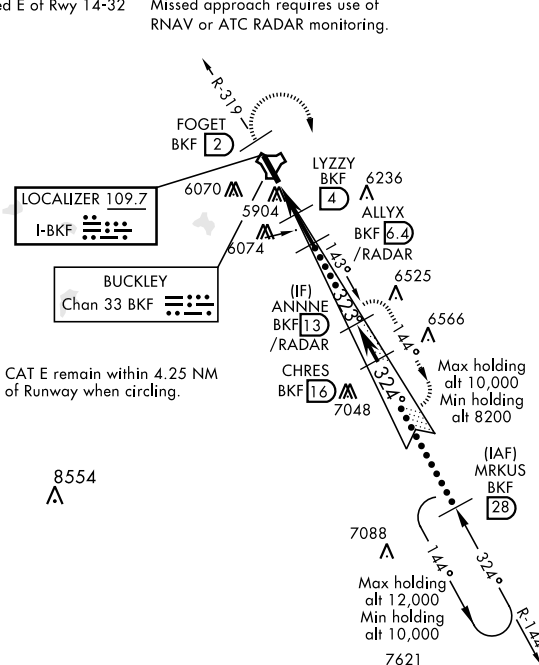


HI-ILS or LOC/DME RWY 32

LOC I-BKF 109.7	APCH CRS 323°	Rwy ldg 11,006 TDZE 5663 Arprt Elev 5663	JAL-538 [USAF]	BUCKLEY AFB (KBKF)
* When ALS inop, increase CAT CDE RVR to 40 and vis to ¾ miles. ** When ALS inop, increase CAT CDE vis to 1¼ miles.		ALSF-1 	MISSED APPROACH: Climb on BKF TACAN R-319 to FOGET, then climbing right turn to 8200 and intercept BKF R-144 to ANNNE and hold or as directed by ATC.	

ATIS ★ 119.675 259.3	DENVER APP CON 128.45 251.075	BUCKLEY TOWER ★ 121.0 291.675	GND CON 121.6 275.8	CLNC DEL 121.6 275.8
--------------------------------	---	---	-------------------------------	--------------------------------

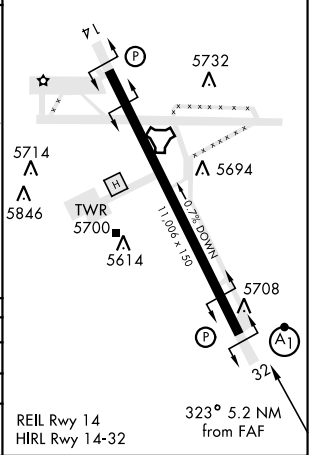
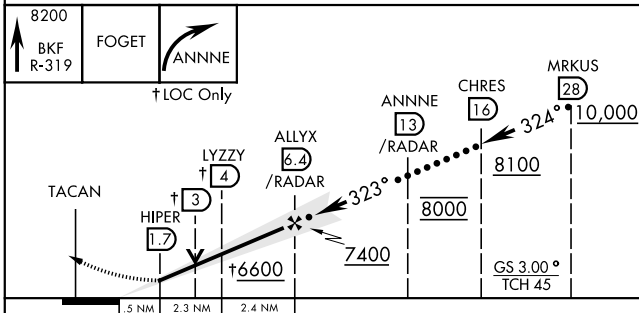
*** Circling not authorized E of Rwy 14-32 Missed approach requires use of RNAV or ATC RADAR monitoring.



CAT E remain within 4.25 NM of Runway when circling.

EMERG SAFE ALT 100 NM 16,500

ELEV 5663	TDZE 5663
-----------	-----------



CATEGORY	C	D	E
S-ILS 32 *	5863/24	200	(200-½)
S-LOC 32 **	6280-1¾	617	(700-1¾)
CIRCLING ***	6360-2 697 (700-2)	6400-2¼ 737 (800-2¼)	6420-2¾ 757 (800-2¾)

HI-ILS or LOC/DME RWY 32

SW-1, 08 OCT 2020 to 05 NOV 2020

SW-1, 08 OCT 2020 to 05 NOV 2020