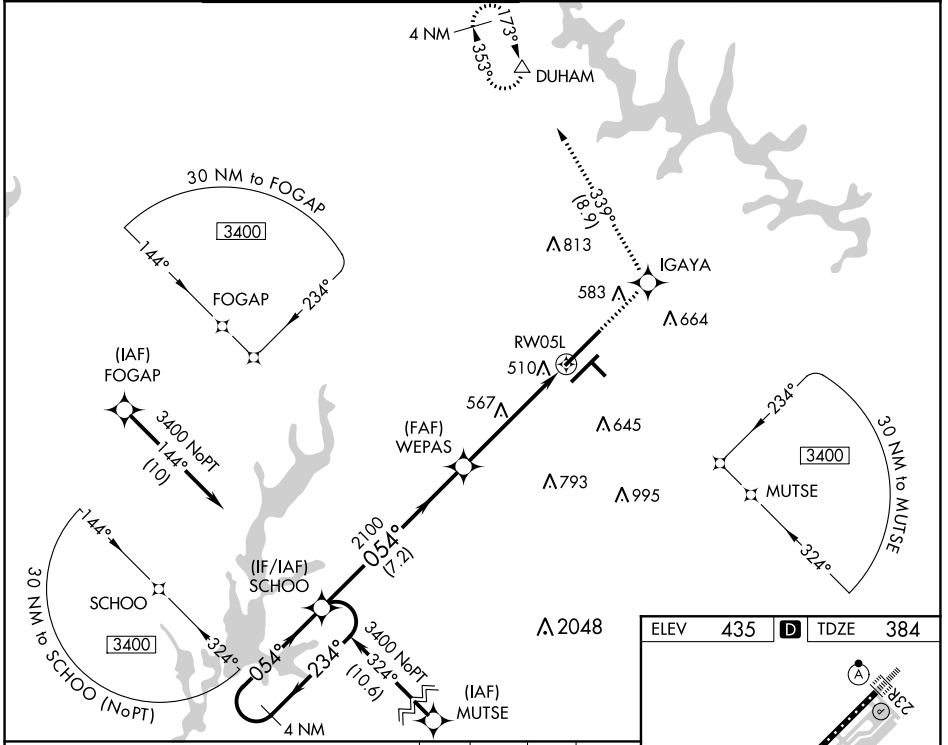


WAAS CH 48813 W05A	APP CRS 054°	Rwy Idg 10000 TDZE 384 Apt Elev 435
--	------------------------	--

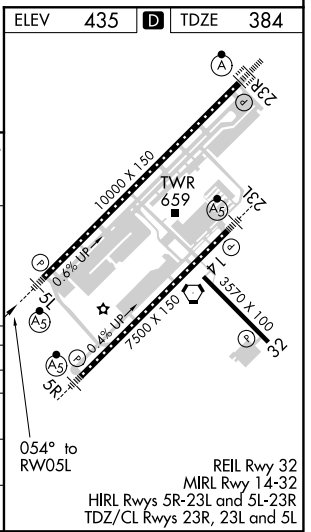
RNAV (GPS) Y RWY 5L

RALEIGH-DURHAM INTL (RDU)

RNP APCH.		MALSR		MISSED APPROACH: Climb to 2200 direct IGAYA and on track 339° to DUHAM and hold.			
<p>⚠ For uncompensated Baro-VNAV systems, LNAV/VNAV NA below -1.5°C (5°F) or above 48°C (118°F). Simultaneous approach authorized. LNAV procedure NA during simultaneous operations. Use of FD or AP providing RNAV track guidance required during simultaneous operations.</p>							
D-ATIS	RALEIGH APP CON	(EAST) RALEIGH TOWER	(WEST)	(EAST) GND CON	(WEST)	CLNC DEL	CPDLC
123.8	127.675 307.9	127.45 257.8	119.3 257.8	121.9 348.6	121.7 348.6	120.1	
		Rwys 5R-23L and 14-32	Rwy 5L-23R	Rwys 5R-23L and 14-32	Rwy 5L-23R		



4 NM Holding Pattern		2200 IGAYA		Tr 339° DUHAM	
3400 ← 234°		054° →		054° →	
GP 3.00° TCH 57		2100		*1.4 NM to RW05L *LNAV only.	
VGSi and RNAV glidepath not coincident (VGSi Angle 3.00/TCH 72).		2100		RW05L	
		7.2 NM		3.8 NM	
				1.4 NM	
CATEGORY	A	B	C	D	
LPV DA	595/24		211 (200-½)		
LNAV/VNAV DA	792/50		408 (400-1)		
LNAV MDA	880/24	496 (500-½)	880/40	880/50	
			496 (500-¾)	496 (500-1)	
CIRCLING	960-1	525 (600-1)	1040-1¾	1180-2½	
			605 (700-1¾)	745 (800-2½)	



SE-2, 08 OCT 2020 to 05 NOV 2020

SE-2, 08 OCT 2020 to 05 NOV 2020

REIL Rwy 32
MIRL Rwy 14-32
HIRL Rwys 5R-23L and 5L-23R
TDZ/CL Rwys 23R, 23L and 5L