

LOC/DME I-DMP 111.7 Chan 54	APP CRS 234°	Rwy Idg TDZE Apt Elev 10000 409 435
---	------------------------	---

ILS or LOC RWY 23R

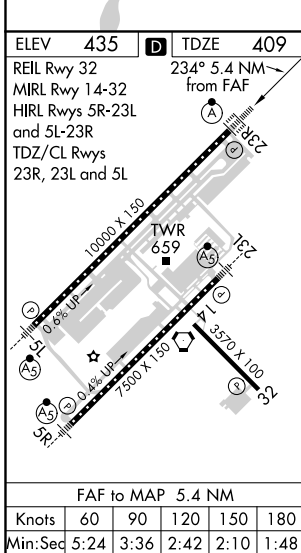
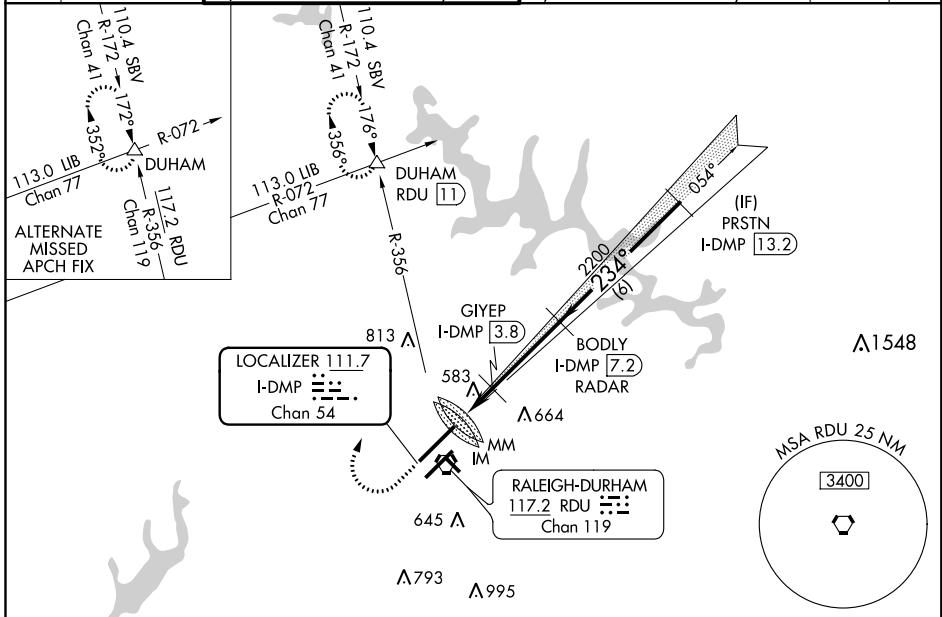
RALEIGH-DURHAM INTL (RDU)

RADAR required for procedure entry, DME or RADAR required. ALSF-2

MISSED APPROACH: Climb to 1000 then climbing right turn to 2200 on heading 030° and on RDU VORTAC R-356 to DUHAM INT/RDU 11 DME and hold.

Simultaneous approach authorized.

D-ATIS 123.8	RALEIGH APP CON 127.675 307.9	(EAST) RALEIGH TOWER (WEST) 127.45 257.8 119.3 257.8 Rwys 5R-23L and 1-4-32 Rwy 5L-23R	(EAST) GND CON (WEST) 121.9 348.6 121.7 348.6 Rwys 5R-23L and 1-4-32 Rwy 5L-23R	CLNC DEL 120.1	CPDLC
------------------------	---	--	---	--------------------------	-------



ELEV 435	TDZE 409	DUHAM	VGSI and ILS glidepath not coincident (VGSI Angle 3.00/TCH 69).																																			
REIL Rwy 32	MIRL Rwy 1-4-32	HIRL Rwys 5R-23L and 5L-23R	TDZ/CL Rwys 23R, 23L and 5L																																			
FAF to MAP 5.4 NM	234° 5.4 NM from FAF	RDU R-356	BODLY I-DMP [7.2] RADAR																																			
Knots 60 90 120 150 180	Min:Sec 5:24 3:36 2:42 2:10 1:48	*LOC only.	PRSTN I-DMP [13.2]																																			
<table border="1"> <tr> <td>CATEGORY</td> <td>A</td> <td>B</td> <td>C</td> <td>D</td> </tr> <tr> <td>S-ILS 23R</td> <td colspan="4">609/18 200 (200-½)</td> </tr> <tr> <td>S-LOC 23R</td> <td>1160/24 751 (800-½)</td> <td>1160/40 751 (800-¾)</td> <td>1160-1¾ 751 (800-1¾)</td> <td>1160-2 751 (800-2)</td> </tr> <tr> <td>CIRCLING</td> <td>1160-1 725 (800-1)</td> <td>1160-1¼ 725 (800-1¼)</td> <td>1160-2¼ 725 (800-2¼)</td> <td>1160-2½ 725 (800-2½)</td> </tr> <tr> <td colspan="5">GIYEP FIX MINIMUMS</td> </tr> <tr> <td>S-LOC 23R</td> <td>900/24 491 (500-½)</td> <td>900/40 491 (500-¾)</td> <td>900/50 491 (500-1)</td> <td>900/50 491 (500-1)</td> </tr> <tr> <td>CIRCLING</td> <td>960-1 525 (600-1)</td> <td>1040-1¾ 605 (700-1¾)</td> <td>1180-2½ 745 (800-2½)</td> <td></td> </tr> </table>				CATEGORY	A	B	C	D	S-ILS 23R	609/18 200 (200-½)				S-LOC 23R	1160/24 751 (800-½)	1160/40 751 (800-¾)	1160-1¾ 751 (800-1¾)	1160-2 751 (800-2)	CIRCLING	1160-1 725 (800-1)	1160-1¼ 725 (800-1¼)	1160-2¼ 725 (800-2¼)	1160-2½ 725 (800-2½)	GIYEP FIX MINIMUMS					S-LOC 23R	900/24 491 (500-½)	900/40 491 (500-¾)	900/50 491 (500-1)	900/50 491 (500-1)	CIRCLING	960-1 525 (600-1)	1040-1¾ 605 (700-1¾)	1180-2½ 745 (800-2½)	
CATEGORY	A	B	C	D																																		
S-ILS 23R	609/18 200 (200-½)																																					
S-LOC 23R	1160/24 751 (800-½)	1160/40 751 (800-¾)	1160-1¾ 751 (800-1¾)	1160-2 751 (800-2)																																		
CIRCLING	1160-1 725 (800-1)	1160-1¼ 725 (800-1¼)	1160-2¼ 725 (800-2¼)	1160-2½ 725 (800-2½)																																		
GIYEP FIX MINIMUMS																																						
S-LOC 23R	900/24 491 (500-½)	900/40 491 (500-¾)	900/50 491 (500-1)	900/50 491 (500-1)																																		
CIRCLING	960-1 525 (600-1)	1040-1¾ 605 (700-1¾)	1180-2½ 745 (800-2½)																																			