

WAAS CH <b>63023</b> <b>W18A</b>	APP CRS <b>183°</b>	Rwy Idg TDZE Apt Elev	<b>5002</b> <b>1082</b> <b>1084</b>
--	------------------------	-----------------------------	---

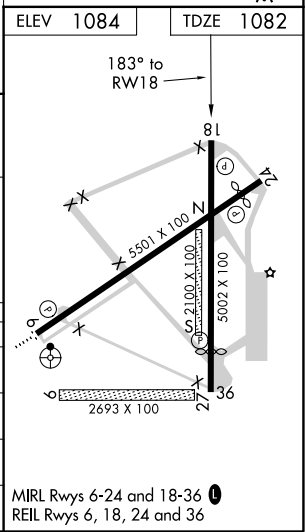
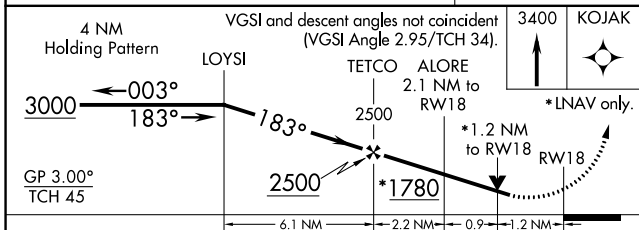
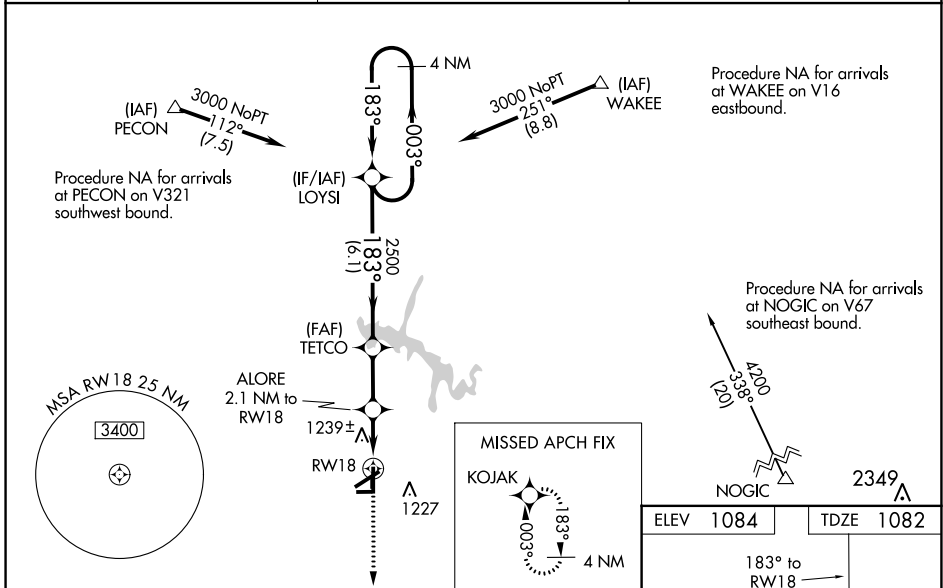
# RNAV (GPS) RWY 18

TULLAHOMA RGNL AIRPORT/WM NORTHERN FIELD (THA)

**NA** Baro-VNAV NA when using Nashville Intl altimeter setting. For uncompensated Baro-VNAV systems, LNAV/VNAV NA below -17°C (2°F) or above 37°C (98°F). DME/DME RNP-0.3 NA. Helicopter visibility reduction below 3/4 SM NA. When local altimeter setting not received, use Nashville Intl altimeter setting and increase all DA 182 feet and all MDA 200 feet, increase LPV all Cats visibility 5/8 mile, LNAV/VNAV all Cats visibility 7/8 mile and LNAV Cat C and D visibility 3/8 mile, increase Circling Cat C visibility 1/4 mile and increase Circling Cat D visibility 1/2 mile. VDP NA when using Nashville Intl altimeter setting. Circling NA to Rws 9 and 27.

**MISSED APPROACH:**  
Climb to 3400 direct KOJAK and hold.

AWOS-3 <b>128.325</b>	MEMPHIS CENTER <b>128.15 323.125</b>	UNICOM <b>123.0 (CTAF)</b>
--------------------------	---	-------------------------------



CATEGORY	A	B	C	D
LPV DA		1436-1 1/4	354 (400-1 1/4)	
LNAV/VNAV DA		1554-1 5/8	472 (500-1 3/8)	
LNAV MDA	1500-1	418 (500-1)	1500-1 1/8	418 (500-1 3/8)
CIRCLING	1540-1 456 (500-1)	1560-1 476 (500-1)	1580-1 1/2 496 (500-1 1/2)	1640-2 556 (600-2)

SE-1, 08 OCT 2020 to 05 NOV 2020

SE-1, 08 OCT 2020 to 05 NOV 2020