

# RNAV (GPS) RWY 5

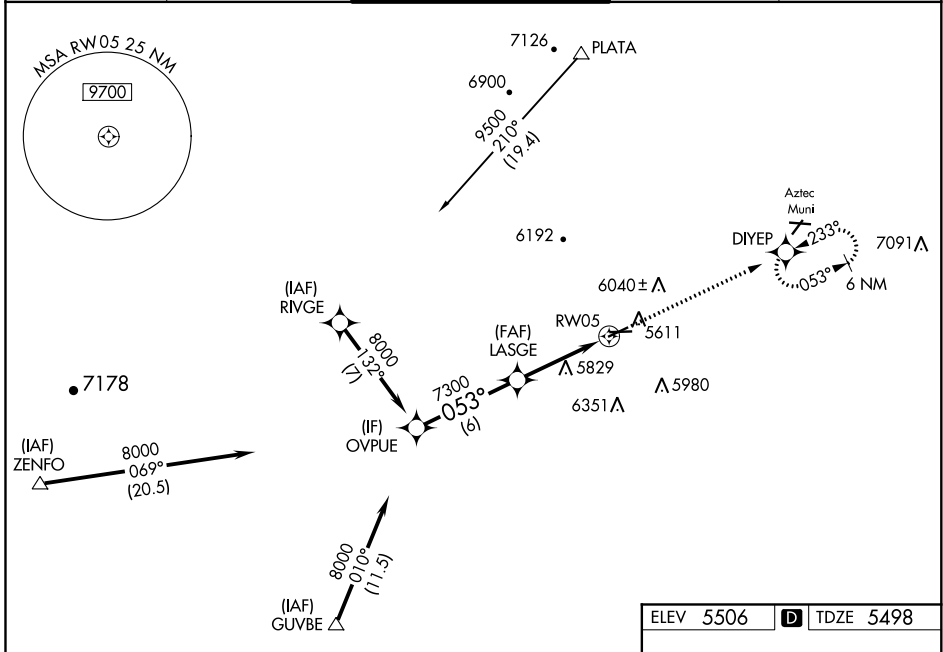
FOUR CORNERS RGNL (FMN)

WAAS CH <b>86210</b> <b>W05A</b>	APP CRS <b>053°</b>	Rwy Idg TDZE <b>5498</b> Apt Elev <b>5506</b>	<b>6376</b>
--	------------------------	---	-------------

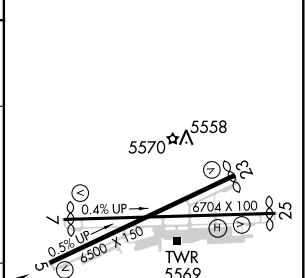
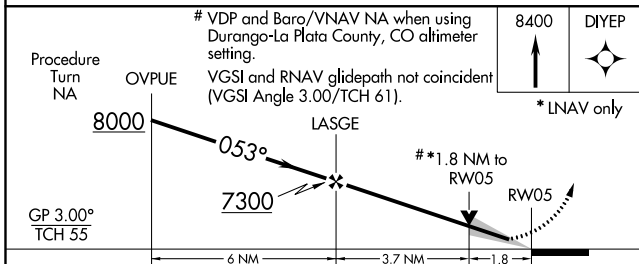
**⚠** Cat D Circling not authorized southeast of Rwy 5 and 25.  
**⚠** Baro-VNAV NA below -26°C (-14°F).  
 DME/DME RNP-0.3 NA.  
 If local altimeter setting not received, use Durango-La Plata County, CO altimeter setting and increase all DAs/MDAs 260 feet.

MISSED APPROACH: Climb to 8400 direct DIYEP and hold.

ATIS <b>127.15</b>	DENVER CENTER <b>118.575 348.7</b>	FARMINGTON TOWER* <b>118.9 (CTAF) 0 257.8</b>	GND CON <b>121.7</b>	UNICOM <b>122.95</b>
-----------------------	---------------------------------------	--	-------------------------	-------------------------



ELEV 5506	<b>D</b> TDZE 5498
-----------	--------------------



CATEGORY	A	B	C	D
LPV DA	5750-1 252 (300-1)			
LNAV/VNAV DA	5920-1½ 422 (500-1½)			
LNAV MDA	6100-1	602 (600-1)	6100-1¾ 602 (600-1¾)	6100-2 602 (600-2)
CIRCLING	6100-1½ 594 (600-1½)	6120-1½ 614 (700-1½)	6160-1¾ 654 (700-1¾)	6160-2 654 (700-2)

REIL Rwy 23 and 25 **Ⓛ**  
 MIRL Rwy 5-23 and 7-25 **Ⓛ**

SW-1, 08 OCT 2020 to 05 NOV 2020

SW-1, 08 OCT 2020 to 05 NOV 2020