

WAAS CH <b>97518</b> <b>W25A</b>	APP CRS <b>256°</b>	Rwy Idg TDZE Apt Elev	<b>6277</b> <b>5506</b> <b>5506</b>
--	------------------------	-----------------------------	---

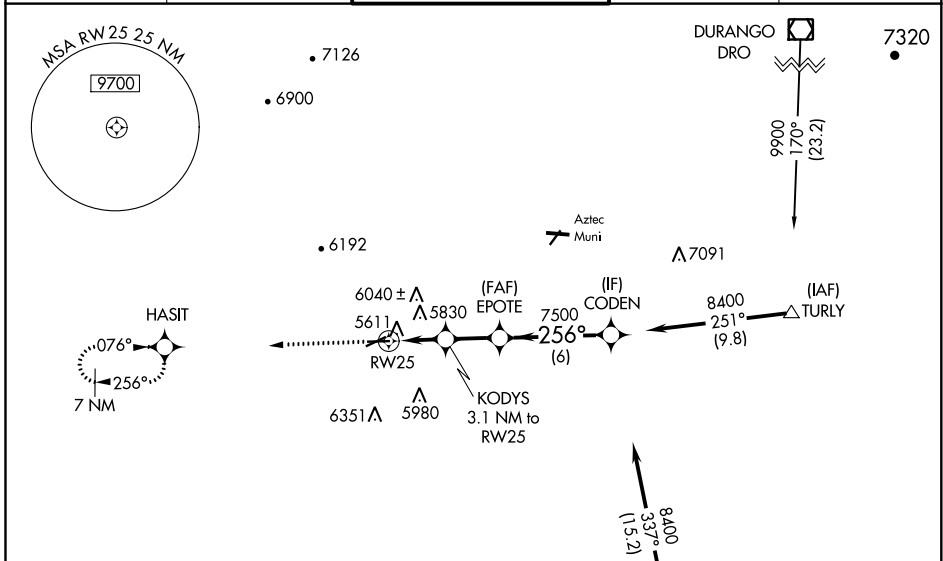
# RNAV (GPS) RWY 25

FOUR CORNERS RGNL (FMN)

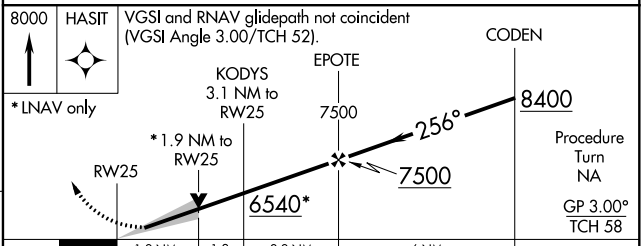
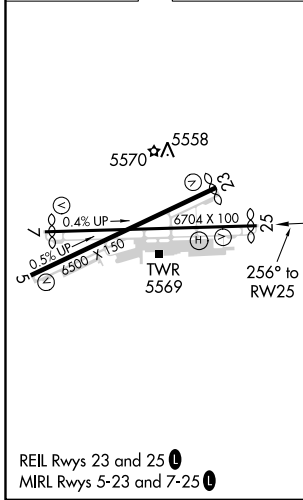
**⚠** Baro-VNAV NA when using Durango-La Plata County, CO altimeter setting. For uncompensated Baro-VNAV systems, LNAV/VNAV NA below -26°C (-14°F) or above 38°C (100°F).  
**⚠** DME/DME RNP 0.3 NA. Cat. D Circling NA SE of Rwy 5 and 25. When local altimeter setting not received, use Durango-La Plata County, CO altimeter setting and increase all DA 243 feet and all MDA 260 feet. Increase LPV visibility ¾ mile all Cats., LNAV/VNAV visibility 1 mile all Cats., LNAV and Circling visibility Cats. A-B ¼ mile, Cats. C-D visibility 1 mile. VDP NA with Durango-La Plata County, CO altimeter setting.

**MISSED APPROACH:**  
Climb to 8000 direct HASIT and hold.

ATIS <b>127.15</b>	DENVER CENTER <b>118.575 348.7</b>	FARMINGTON TOWER * <b>118.9 (CTAF) 257.8</b>	GND CON <b>121.7</b>	UNICOM <b>122.95</b>
-----------------------	---------------------------------------	---	-------------------------	-------------------------



ELEV 5506	<b>D</b>	TDZE 5506
-----------	----------	-----------



CATEGORY	A	B	C	D
LPV DA		5706-¾	200 (200-¾)	
LNAV/VNAV DA		6068-2	562 (600-2)	
LNAV MDA	6160-1	654 (700-1)	6160-1¾ 654 (700-1¾)	6160-2 654 (700-2)
CIRCLING	6160-1	654 (700-1)	6160-1¾ 654 (700-1¾)	6160-2 654 (700-2)

SW-1, 08 OCT 2020 to 05 NOV 2020

SW-1, 08 OCT 2020 to 05 NOV 2020