

WAAS CH <b>70714</b> <b>W23A</b>	APP CRS <b>233°</b>	Rwy Idg TDZE Apt Elev <b>6376</b> <b>5504</b> <b>5506</b>
--	------------------------	--

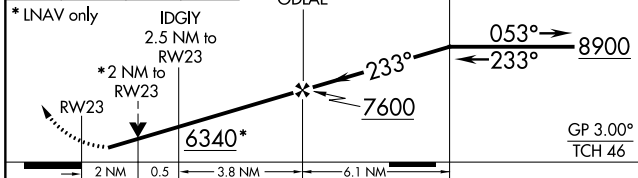
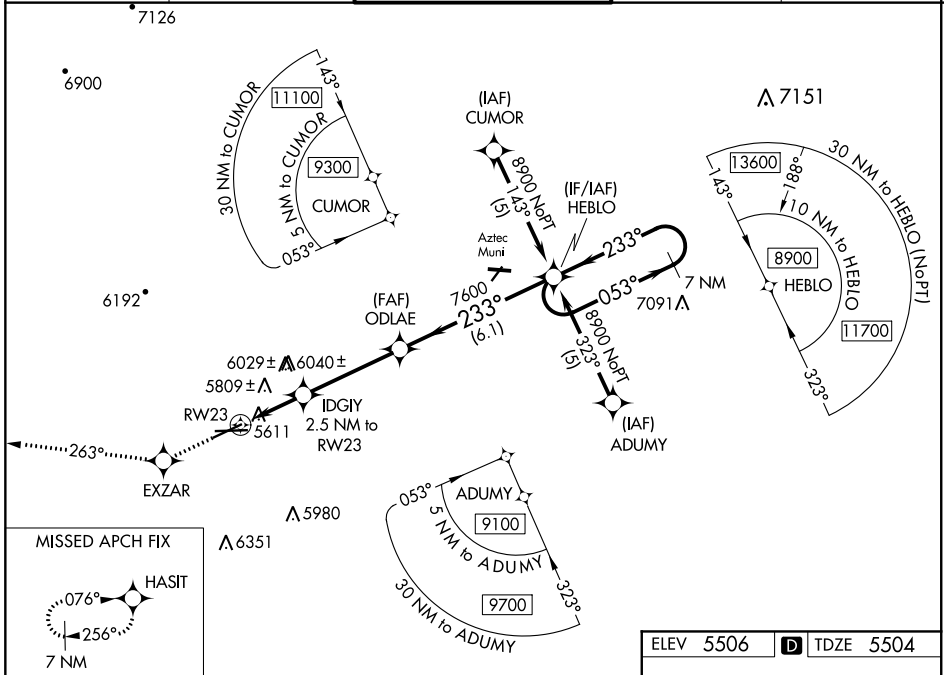
# RNAV (GPS) RWY 23

FOUR CORNERS RGNL (FMN)

**⚠** For uncompensated Baro-VNAV systems, LNAV/VNAV NA below -26°C (-14°F) or above 38°C (100°F). Circling NA Cat D southeast of Rwy 5 and 25. DME/DME RNP-0.3 NA. Visibility reduction by helicopters NA.

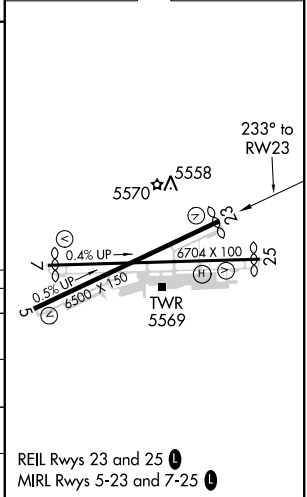
**⚠** MISSED APPROACH: Climb to 8000 direct EXZAR and via track 263° to HASIT and hold.

ATIS <b>127.15</b>	DENVER CENTER <b>118.575 348.7</b>	FARMINGTON TOWER* <b>118.9 (CTAF) 257.8</b>	GND CON <b>121.7</b>	UNICOM <b>122.95</b>
-----------------------	---------------------------------------	--	-------------------------	-------------------------



ELEV 5506	<b>D</b> TDZE 5504
-----------	--------------------

CATEGORY	A	B	C	D
LPV DA	5798-1 294 (300-1)			
LNAV/VNAV DA	6138-2¼ 634 (700-2¼)			
LNAV MDA	6180-1 676 (700-1)	6180-2 676 (700-2)	6180-2¼ 676 (700-2¼)	6180-2¼ 676 (700-2¼)
CIRCLING	6180-1 674 (700-1)	6180-2 674 (700-2)	6180-2¼ 674 (700-2¼)	6180-2¼ 674 (700-2¼)



SW-1, 08 OCT 2020 to 05 NOV 2020

SW-1, 08 OCT 2020 to 05 NOV 2020