

TACAN RWY 32L

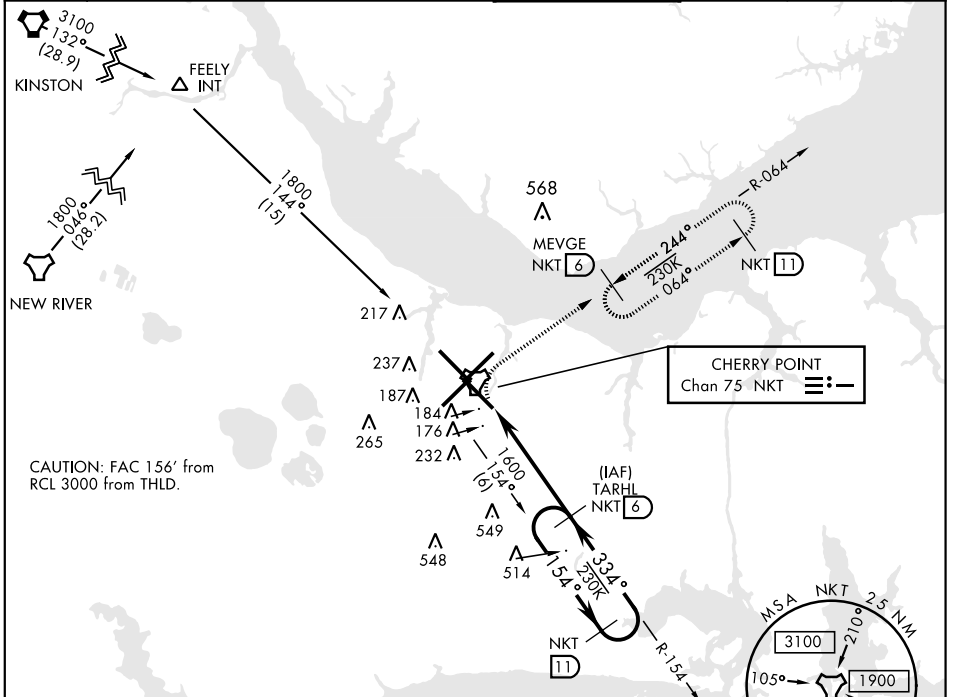
TACAN NKT Chan 75	APCH CRS 334°	Rwy ldg 7551 TDZE 26 Arprt Elev 29	AL-471 [USN]	CHERRY POINT MCAS (CUNNINGHAM FLD) (KNKT)
----------------------	------------------	---	--------------	---

▼ * When ALS inop, increase vis CAT AB to 1 mile, CAT CD to 1 3/8 miles.

ALSF-1 (A1)

MISSED APPROACH: Climb on hdg 334°. At 500 climbing right turn to 1600 direct MEVGE and hold.

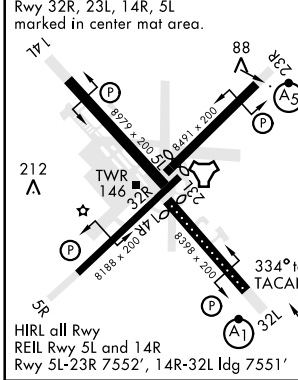
ATIS 127.475 244.875	CHERRY POINT APP CON (E) 119.75 360.775 (abv 2600') (E) 132.575 299.6 (at/blw 2600') (W) 119.35 377.175 (N) 124.1 268.7	CHERRY POINT TOWER 121.3 340.2	GND CON 128.625 239.025	CLNC DEL 125.95 316.125	ASR/PAR
----------------------------	--	-----------------------------------	-------------------------------	-------------------------------	---------



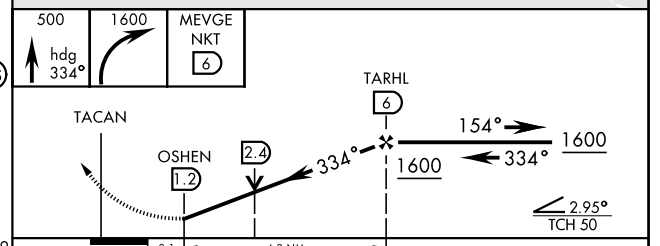
CAUTION: FAC 156' from RCL 3000 from THLD.

EMERG SAFE ALT 100 NM 4100

ELEV 29	TDZE 26
---------	---------



HIRL all Rwy
REIL Rwy 5L and 14R
Rwy 5L-23R 7552', 14R-32L ldg 7551'



CATEGORY	A	B	C	D
S-32L *	480-1/2	454 (500-1/2)	480-7/8	454 (500-7/8)
<input checked="" type="checkbox"/> CIRCLING	580-1	551 (600-1)	600-1/2	600-2
			571 (600-1/2)	571 (600-2)

TACAN RWY 32L

SE-2, 08 OCT 2020 to 05 NOV 2020

SE-2, 08 OCT 2020 to 05 NOV 2020