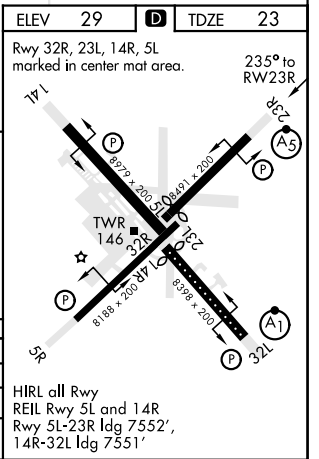
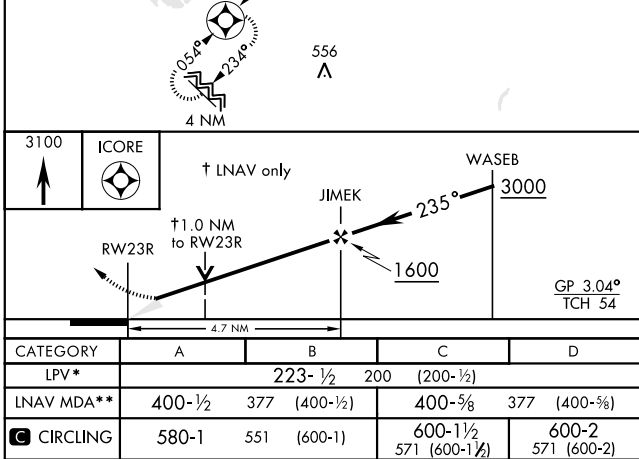
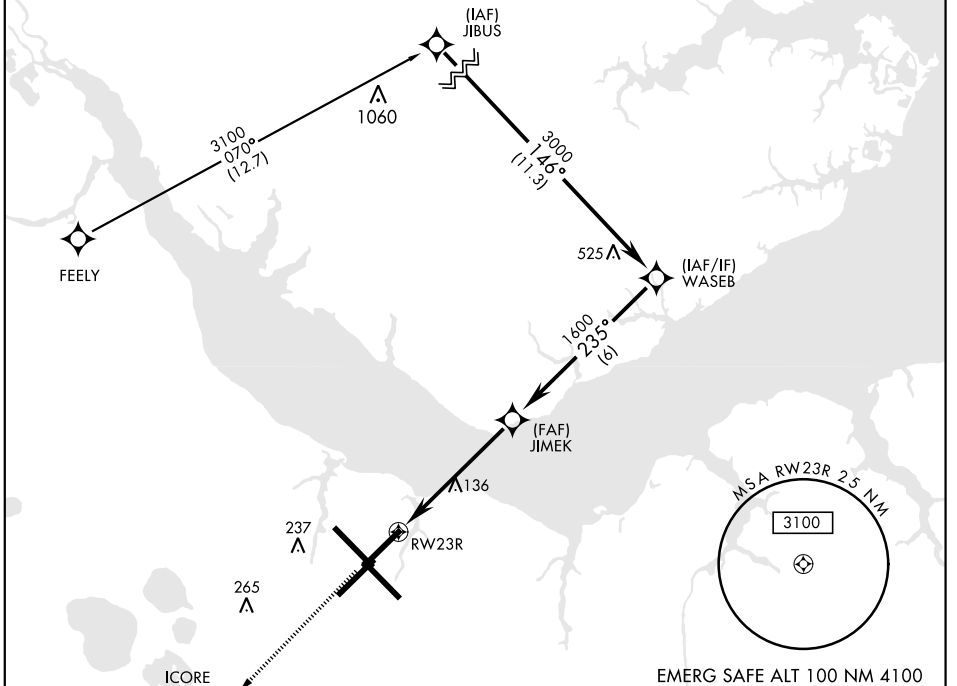


RNAV (GPS) RWY 23R

WAAS Chan 51523 W23A	APCH CRS 235°	Rwy ldg TDZE Arprt Elev 7552 23 29	AL-471 [USN] CHERRY POINT MCAS (CUNNINGHAM FLD) (KNKT)
--	-------------------------	--	--

RNP APCH ▼ * When ALS inop, increase vis to ¾ mile. ** When ALS inop, increase to 1 mile.	MALSR 	Missed Approach: Climb to 3100 direct ICORE and hold. Continue climb in hold to 3100.
---	-----------	--

ATIS 127.475 244.875	CHERRY POINT APP CON (E) 119.75 360.775 (abv 2600') (E) 132.575 299.6 (at/blw 2600') (W) 119.35 377.175 (N) 124.1 268.7	CHERRY POINT TOWER 121.3 340.2	GND CON 128.625 239.025	CLNC DEL 125.95 316.125	ASR/ PAR
--	--	---	---	---	-------------



RNAV (GPS) RWY 23R

SE-2, 08 OCT 2020 to 05 NOV 2020

SE-2, 08 OCT 2020 to 05 NOV 2020