

CHERRY POINT, NORTH CAROLINA

RNAV (GPS) RWY 14L

WAAS Chan 41117 W14A	APCH CRS 144°	Rwy Idg TDZE Arprt Elev 8979 26 29
--	-------------------------	--

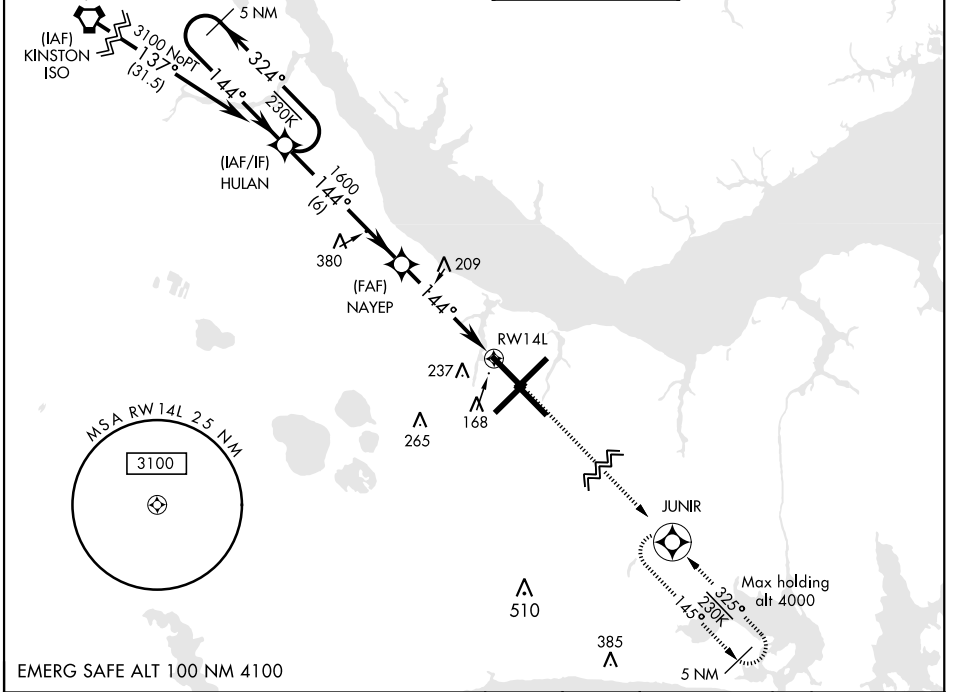
AL-471 [USN] CHERRY POINT MCAS (CUNNINGHAM FLD) (KNKT)

RNP APCH

▼ For uncompensated Baro-VNAV systems, LNAV/VNAV NA below -15°C (5°F) or above 54°C (129°F).

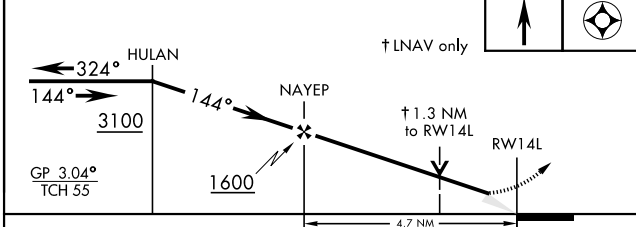
MISSED APPROACH: Climb to 3100 direct JUNIR and hold.

CHERRY POINT APP CON		CHERRY POINT TOWER	GND CON	CLNC DEL	ASR/PAR
ATIS 127.475 244.875	(E) 119.75 360.775 (abv 2600') (E) 132.575 299.6 (at/blw 2600') (W) 119.35 377.175 (N) 124.1 268.7	121.3 340.2	128.625 239.025	125.95 316.125	

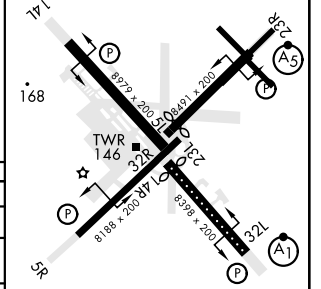


VGSI and RNAV glidepath not coincident

3100	JUNIR	ELEV 29	TDZE 26
------	-------	---------	---------



Rwy 32R, 23L, 14R, 5L marked in center mat area.



CATEGORY	A	B	C	D
LPV DA	226-¾		200 (200-¾)	
LNAV/VNAV DA	300-¾ 274 (300-¾)	311-¾ 285 (300-¾)	319-¾ 293 (300-¾)	330-¾ 304 (400-¾)
LNAV MDA	500-1	474 (500-1)	500-1¾	474 (500-1¾)
CIRCLING	580-1	551 (600-1)	600-1½ 571 (600-1½)	600-2 571 (600-2)

HIRL all Rwy
REIL Rwy 5L and 14R
Rwy 5L-23R Idg 7552'
Rwy 14R-32L Idg 7551'

CHERRY POINT, NORTH CAROLINA

34° 54'N-76° 53'W

CHERRY POINT MCAS (CUNNINGHAM FLD) (KNKT)

Amdt 3 10SEP20

RNAV (GPS) RWY 14L

SE-2, 08 OCT 2020 to 05 NOV 2020

SE-2, 08 OCT 2020 to 05 NOV 2020