

TBIRD THREE DEPARTURE (RNAV)

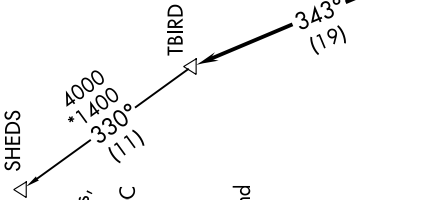
SE-3, 08 OCT 2020 to 05 NOV 2020

D-ATIS 123.75
 CLNC DEL 121.6 284.6
 GND CON 121.9 284.6
 PALM BEACH TOWER 119.1 257.8
 PALM BEACH DEP CON 128.3 317.4 (North)
 125.2 343.6 (South)



TOP ALTITUDE:
4000

TAKEOFF MINIMUMS
 Rwy 10R, 28L: NA-ATC.
 Rwy 14, 10L: Standard with minimum climb of 500' per NM to 520.
 Rwy 28R, 32: Standard with minimum climb of 500' per NM to 520. ATC climb of 500' per NM to 4000.



- NOTE: For Turboprops only.
- NOTE: If unable to accept minimum climb rates, advise ATC on initial contact.
- NOTE: Transponder code will be issued via PDC or Palm Beach CLNC DEL.
- NOTE: DME/DME/IRU or GPS required.
- NOTE: RADAR required.
- NOTE: RNAV 1.
- NOTE: For non-GPS equipped aircraft: PHK and PBI DMEs must be operational.
- NOTE: For aircraft 11,000 or above.

DEPARTURE ROUTE DESCRIPTION

TAKEOFF RUNWAY 10L: Climb on heading 099° to 520, then direct CRRMN, then on depicted route to DIAPR, thence. . . .

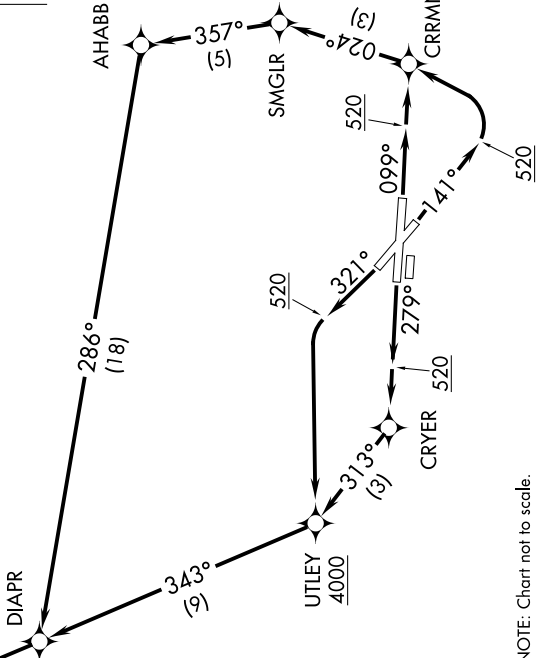
TAKEOFF RUNWAY 14: Climb on heading 141° to 520, then left turn direct CRRMN, then on depicted route to DIAPR, thence. . . .

TAKEOFF RUNWAY 28R: Climb on heading 279° to 520, then direct CRYER, then on depicted route to DIAPR, thence. . . .

TAKEOFF RUNWAY 32: Climb on heading 321° to 520, then left turn direct UTLEY, then on depicted route to DIAPR, thence. . . .

. . . . on depicted route to TBIRD. Maintain 4000 or as assigned by ATC. Expect clearance to filed altitude within 10 minutes after departure.

SHEDS TRANSITION (TBIRD3.SHEDS)



NOTE: Chart not to scale.

SE-3, 08 OCT 2020 to 05 NOV 2020