

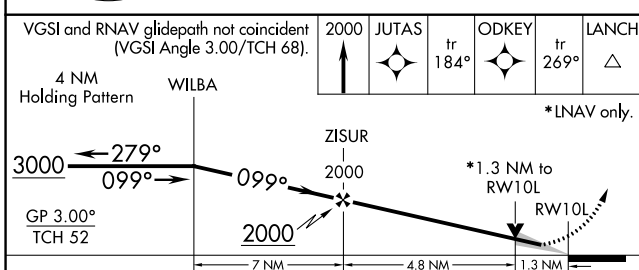
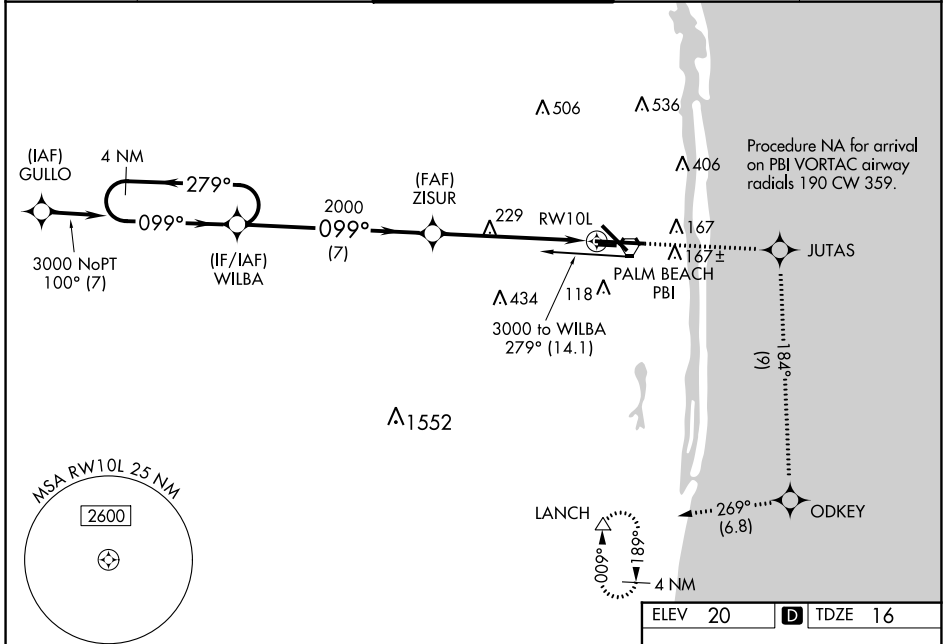
WAAS CH 97317 W10A	APP CRS 099°	Rwy Idg TDZE 16 Apt Elev 20	8800
--	------------------------	---	-------------

RNAV (GPS) Y RWY 10L

PALM BEACH INTL (PBI)

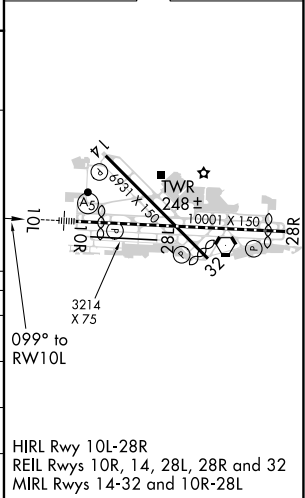
RNP APCH.		MALS R	MISSED APPROACH: Climb to 2000 direct JUTAS and on track 184° to ODKEY and on track 269° to LANCH and hold.
<p>⚠ For uncompensated Baro-VNAV systems, LNAV/VNAV NA below -15°C (5°F) or above 43°C (109°F). For inop ALS, increase LNAV Cats C/D visibility to 1 3/8 SM. # RVR 1800 authorized with use of FD or AP or HUD to DA.</p>			

D-ATIS 123.75	PALM BEACH APP CON 128.3 317.4	PALM BEACH TOWER 119.1 257.8	GND CON 121.9 284.6	CLNC DEL 121.6 284.6
-------------------------	--	--	-------------------------------	--------------------------------



ELEV 20	D TDZE 16
---------	------------------

CATEGORY	A	B	C	D
LPV DA #		216/24	200 (200-1/2)	
LNAV/VNAV DA		404/40	388 (400-3/4)	
LNAV MDA	500/24	484 (500-1/2)	500/50	484 (500-1)
C CIRCLING	560-1	540 (600-1)	680-1 3/4 660 (700-1 3/4)	780-2 1/2 760 (800-2 1/2)



SE-3, 08 OCT 2020 to 05 NOV 2020

SE-3, 08 OCT 2020 to 05 NOV 2020