

APP CRS	Rwy Idg	6000
141°	TDZE	17
	Apt Elev	19

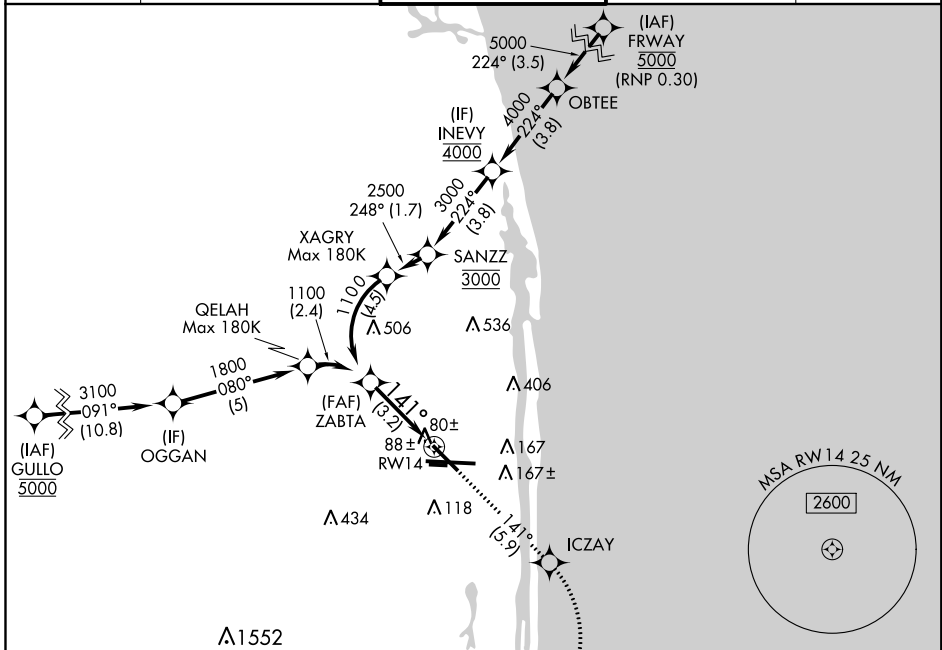
RNAV (RNP) Z RWY 14

PALM BEACH INTL (PBI)

RF and GPS required. For uncompensated Baro-VNAV systems, procedure NA below 3°C (38°F) or above 47°C (118°F). When VGSI inop, procedure NA at night.

MISSED APPROACH: (Do not exceed 200 KIAS until VNDAL) Climb to 2000 on track 141° to ICZAY and right turn to VNDAL and on track 275° to LANCH and hold.

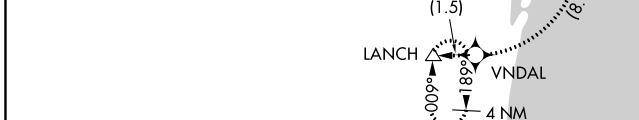
D-ATIS	PALM BEACH APP CON	PALM BEACH TOWER	GND CON	CLNC DEL
123.75	128.3 317.4	119.1 257.8	121.9 284.6	121.6 284.6



SE-3, 08 OCT 2020 to 05 NOV 2020

SE-3, 08 OCT 2020 to 05 NOV 2020

ELEV	19	D	TDZE	17
------	-----------	----------	------	-----------



See planview for multiple IF locations.

Procedure Turn NA

ZABTA 1100

GP 3.00° TCH 51

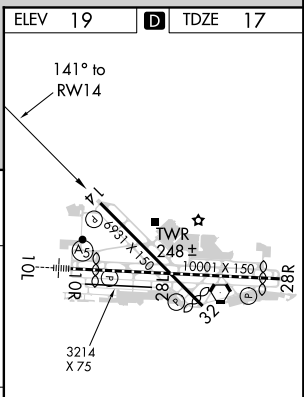
2000 tr 141°

ICZAY

VNDAL tr 275°

LANCH

VGSi and RNAV glidepath not coincident (VGSi Angle 3.00/TCH 66).



CATEGORY	A	B	C	D
RNP 0.11 DA		320-1	303 (400-1)	
RNP 0.30 DA		364-1¼	347 (400-1¼)	

AUTHORIZATION REQUIRED

HIRL Rwy 10L-28R
REIL Rwys 10R, 14, 28L, 28R and 32
MIRL Rwys 14-32 and 10R-28L