

# DADES SIX ARRIVAL (RNAV)

TAMPA, FLORIDA

TAMPA APP CON  
 135.5 279.6  
 KMCF ATIS  
 133.825 270.1  
 PIE ATIS  
 134.5  
 TPA D-ATIS ARR  
 126.45  
 VDF AWOS-3  
 121.125

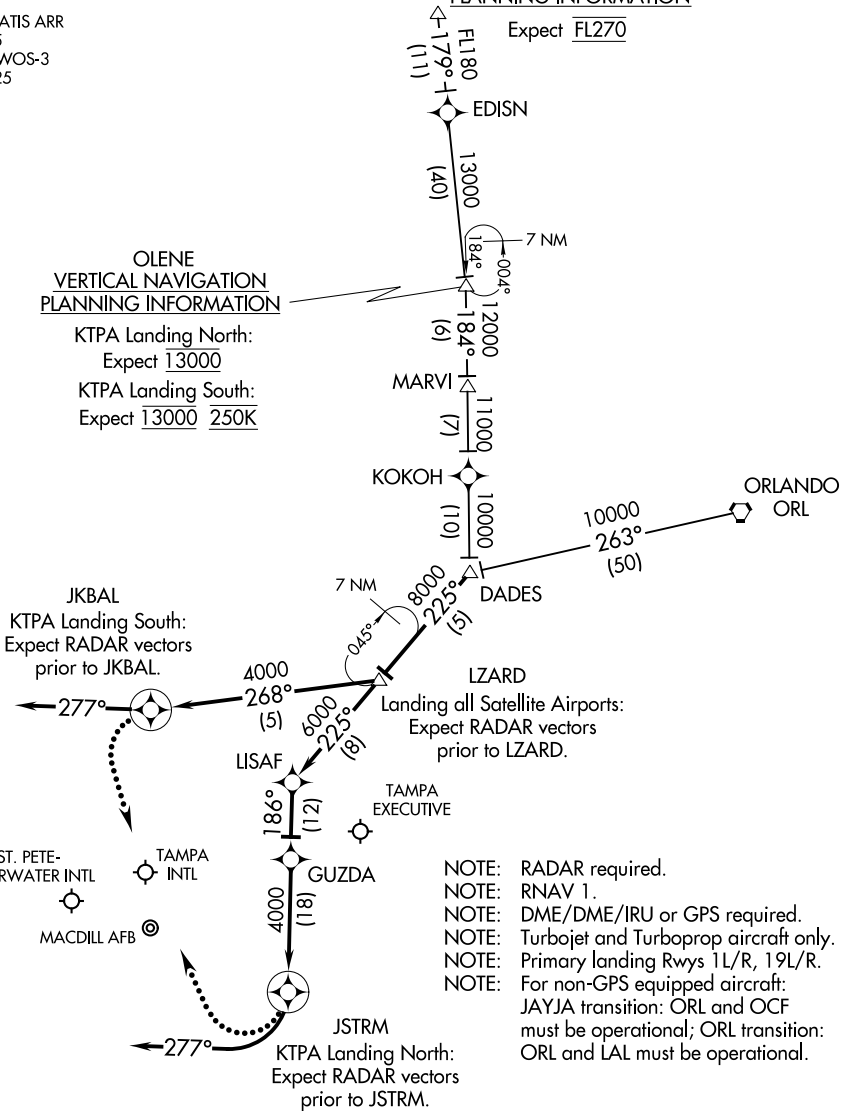
### JAYJA VERTICAL NAVIGATION PLANNING INFORMATION

Expect FL270

### OLENE VERTICAL NAVIGATION PLANNING INFORMATION

KTPA Landing North:  
 Expect 13000

KTPA Landing South:  
 Expect 13000 250K



- NOTE: RADAR required.
- NOTE: RNAV 1.
- NOTE: DME/DME/IRU or GPS required.
- NOTE: Turbojet and Turboprop aircraft only.
- NOTE: Primary landing Rwy's 1L/R, 19L/R.
- NOTE: For non-GPS equipped aircraft:  
 JAYJA transition: ORL and OCF must be operational; ORL transition: ORL and LAL must be operational.

NOTE: Chart not to scale.

(NARRATIVE ON FOLLOWING PAGE)

# DADES SIX ARRIVAL (RNAV)

(DADES.DADES6) 08NOV18

TAMPA, FLORIDA

SE-3, 08 OCT 2020 to 05 NOV 2020

SE-3, 08 OCT 2020 to 05 NOV 2020