

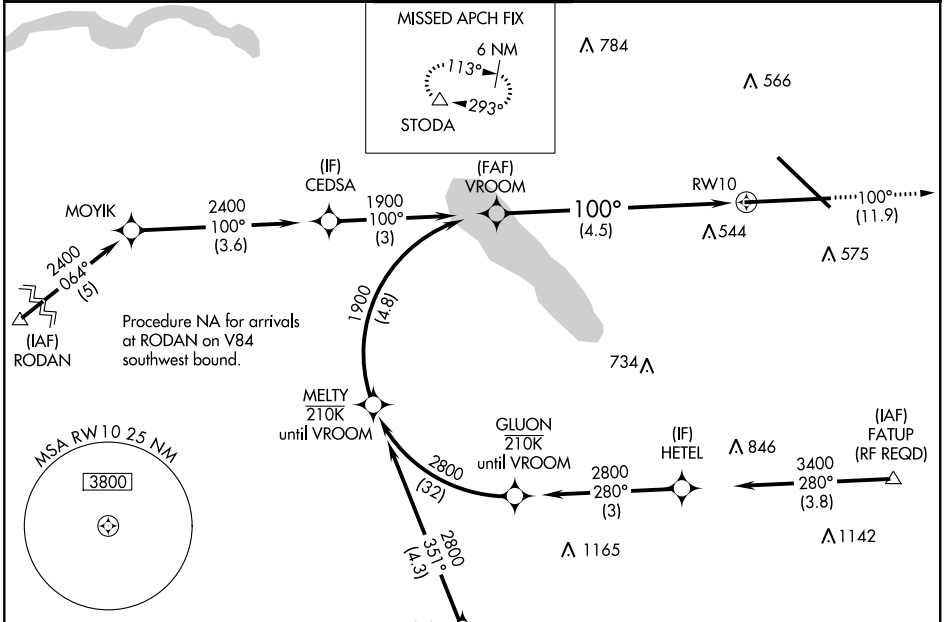
APP CRS <b>100°</b>	Rwy Idg <b>9003</b>
	TDZE <b>421</b>
	Apt Elev <b>421</b>

# RNAV (RNP) Y RWY 10

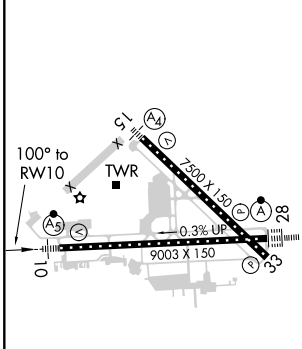
SYRACUSE HANCOCK INTL (SYR)

RNP AR APCH.	MALSR 	MISSED APPROACH: Climb to 3000 on track 100° to STODA and hold.
<p>▼ For uncompensated Baro-VNAV systems, procedure NA below -18°C or above 54°C. For inop ALS, increase RNP 0.15 all Cats visibility to 1½. For inop ALS, increase RNP 0.30 all Cats visibility to 1¾.</p>		

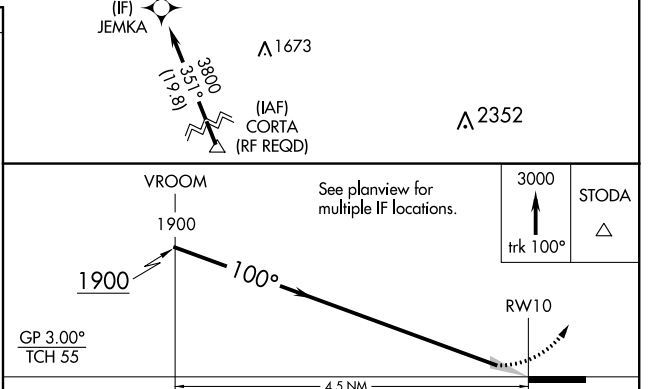
ATIS <b>124.225</b>	SYRACUSE APP CON <b>126.125 269.125</b>	SYRACUSE TOWER <b>120.3 239.0</b>	GND CON <b>121.7 348.6</b>	CLNC DEL <b>125.05 257.775</b>
------------------------	--	--------------------------------------	-------------------------------	-----------------------------------



ELEV 421	<b>D</b>	TDZE 421
----------	----------	----------



GP 3.00° TCH 55	3000 ↑ trk 100°	STODA △
TDZ/CL Rwy 28 HIRL Rwy 10-28 and 15-33		



CATEGORY	A	B	C	D
RNP 0.15 DA		816/45	395 (400-¾)	
RNP 0.30 DA		881/55	460 (500-1)	

**AUTHORIZATION REQUIRED**

NE-2, 08 OCT 2020 to 05 NOV 2020

NE-2, 08 OCT 2020 to 05 NOV 2020