

WAAS CH <b>97311</b> <b>W36A</b>	APP CRS <b>360°</b>	Rwy Idg TDZE Apt Elev	<b>6015</b> <b>224</b> <b>224</b>
--	------------------------	-----------------------------	---

# RNAV (GPS) RWY 36

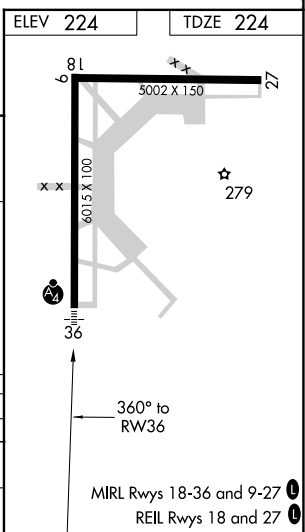
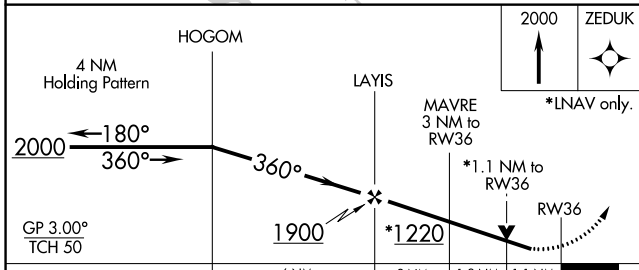
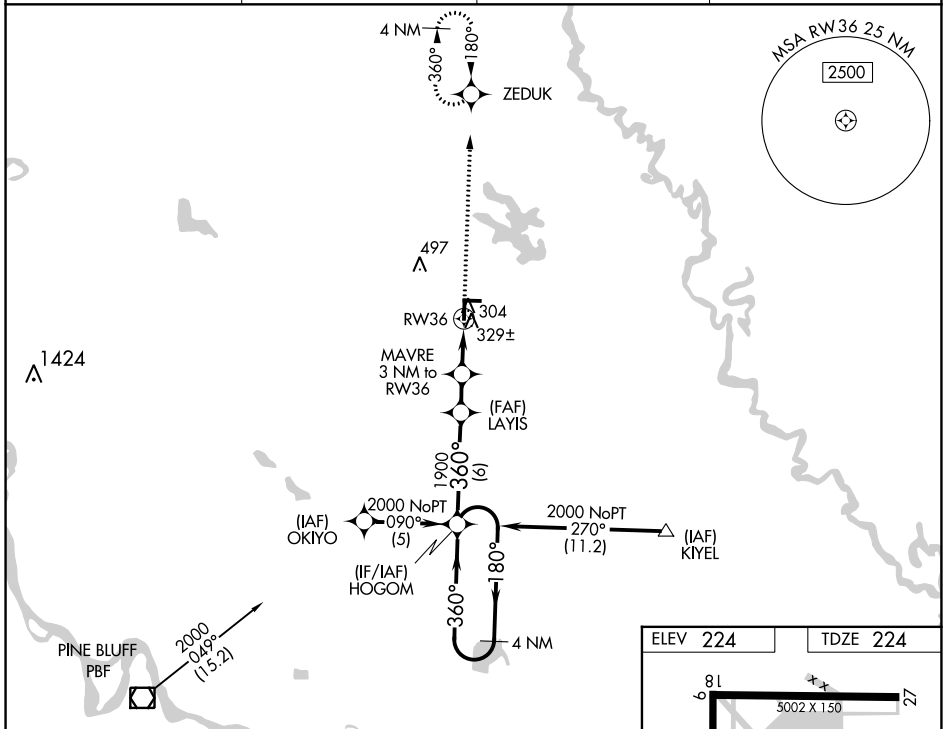
STUTTGART MUNI CARL HUMPHREY FIELD (SGT)

**⚠** DME/DME RNP-0.3 NA. When local altimeter setting not received, use Bill and Hillary Clinton National/Adams Field altimeter setting and increase LPV DA to 556 and all visibilities ½ mile, increase all MDA 100 feet. For inop MALSF when using Bill and Hillary Clinton National/Adams Field altimeter setting, increase LPV all Cats visibility to 1½ mile. VDP NA when using Bill and Hillary Clinton National/Adams Field altimeter setting.



**MISSED APPROACH:**  
Climb to 2000 direct ZEDUK and hold.

AWOS-3PT <b>119.025</b>	LITTLE ROCK APP CON <b>135.4 353.6</b>	CLNC DEL <b>123.7</b>	UNICOM <b>122.8 (CTAF) 0</b>
----------------------------	---	--------------------------	---------------------------------



CATEGORY	A	B	C	D
LPV DA		474-¾	250 (300-¾)	
LNAV MDA	620-¾	396 (400-¾)		620-1¼ 396 (400-1¼)
CIRCLING	660-1 436 (500-1)	680-1 456 (500-1)	680-1½ 456 (500-1½)	780-2 556 (600-2)

SC-1, 08 OCT 2020 to 05 NOV 2020

SC-1, 08 OCT 2020 to 05 NOV 2020