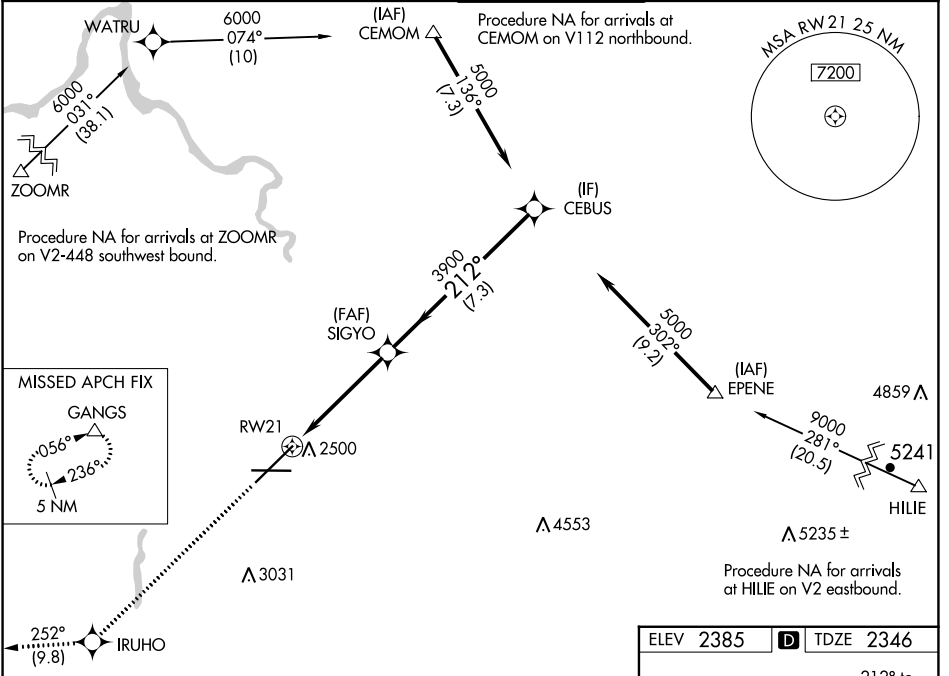


WAAS CH 82619 W21A	APP CRS 212°	Rwy Idg TDZE 2346 Apt Elev 2385
--	------------------------	---

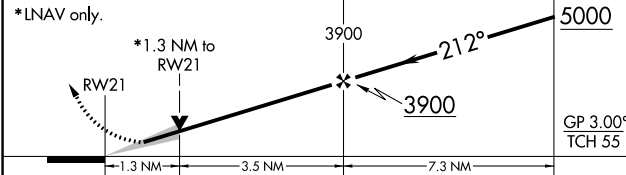
RNAV (GPS) Y RWY 21

SPOKANE INTL (GEG)

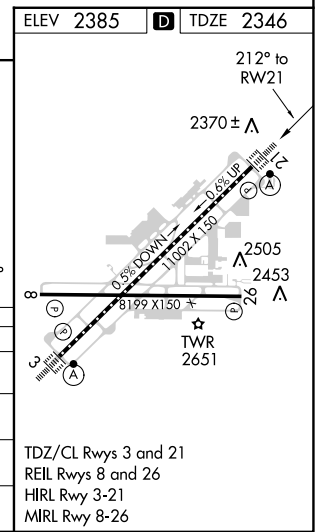
RNP APCH.	ALSIF-2	MISSED APPROACH: Climb to 5000 direct IRUHO and on track 252° to GANGS and hold.		
<p>▼ For uncompensated Baro-VNAV systems, LNAV/VNAV NA below -18°C or above 53°C.</p> <p>▲</p>				
ATIS 124.325 254.375	SPOKANE APP CON 123.75 282.25 (205°-025°) 133.35 263.0 (026°-204°)	SPOKANE TOWER 118.3 278.3	GND CON 121.9 348.6	CLNC DEL 127.55



5000	IRUHO	tr 252°	GANGS	VGSI and RNAV glidepath not coincident (VGSI Angle 3.00/TCH 73).
CEBUS				



CATEGORY	A	B	C	D
LPV DA	2546/18		200 (200-½)	
LNAV/VNAV DA	2720/45		374 (400-¾)	
LNAV MDA	2800/24	454 (500-½)	2800/45	454 (500-¾)
CIRCLING	2960-1 575 (600-1)	2980-1 595 (600-1)	3300-2¾ 915 (1000-2¾)	3400-3 1015 (1100-3)



NW-1, 08 OCT 2020 to 05 NOV 2020

NW-1, 08 OCT 2020 to 05 NOV 2020