

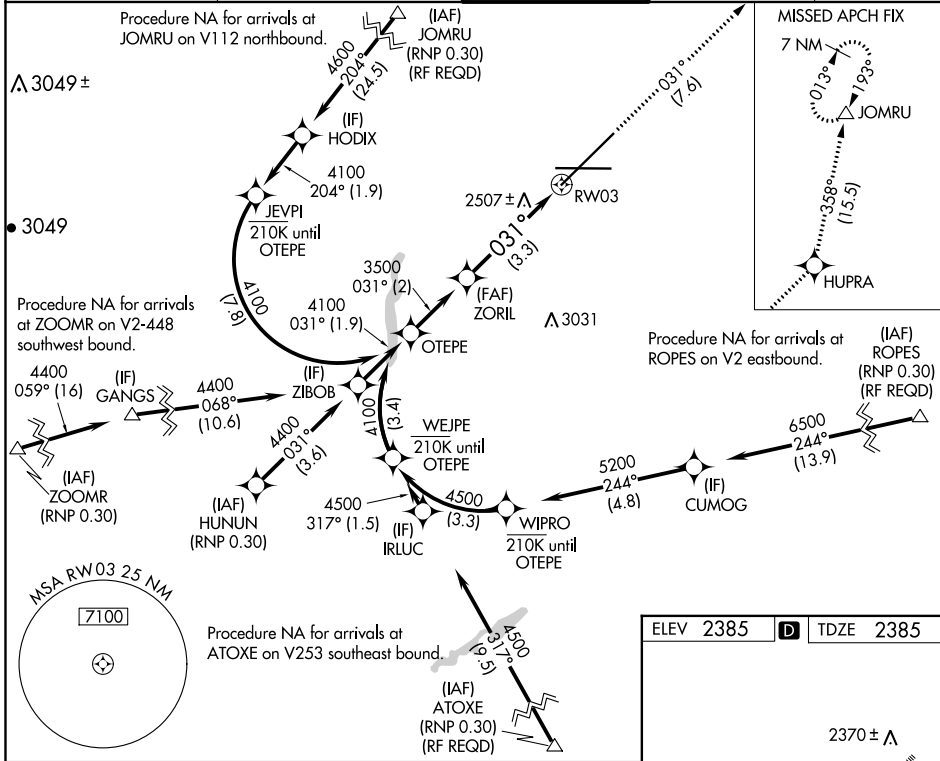
APP CRS <b>031°</b>	Rwy Idg <b>11002</b>
	TDZE <b>2385</b>
	Apt Elev <b>2385</b>

# RNAV (RNP) Z RWY 3

SPOKANE INTL (GEG)

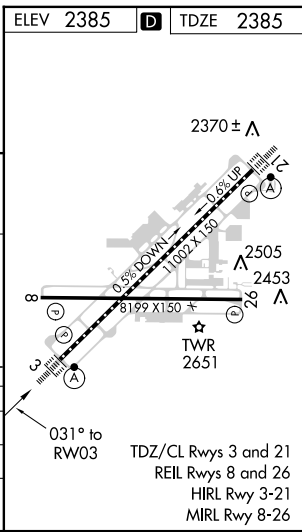
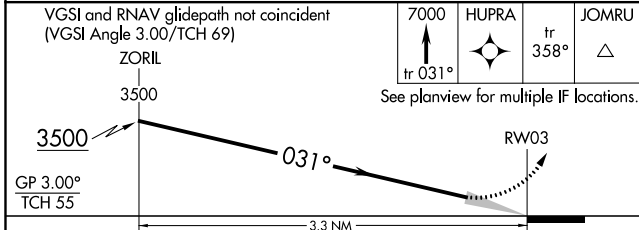
RNP AR APCH.	ALSF-2	MISSED APPROACH: Climb to 7000 on track 031° to HUPRA and on track 358° to JOMRU and hold.
<p>▼ For uncompensated Baro-VNAV systems, procedure NA below -18°C or above 53°C.</p>		

ATIS <b>124.325 254.375</b>	SPOKANE APP CON <b>123.75 282.25 (205°-025°)</b> <b>133.35 263.0 (026°-204°)</b>	SPOKANE TOWER <b>118.3 278.3</b>	GND CON <b>121.9 348.6</b>	CLNC DEL <b>127.55</b>
--------------------------------	----------------------------------------------------------------------------------------	-------------------------------------	-------------------------------	---------------------------



NW-1, 08 OCT 2020 to 05 NOV 2020

NW-1, 08 OCT 2020 to 05 NOV 2020



CATEGORY	A	B	C	D
RNP 0.11 DA		2716/26	331 (400-½)	
RNP 0.30 DA		2842/45	457 (500-¾)	

**AUTHORIZATION REQUIRED**