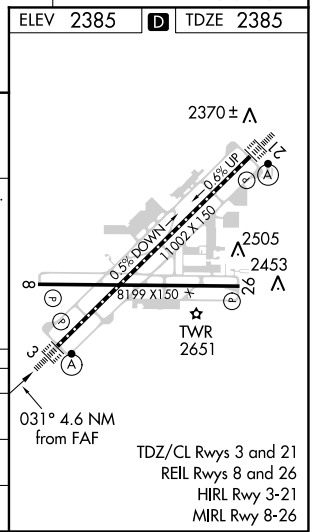
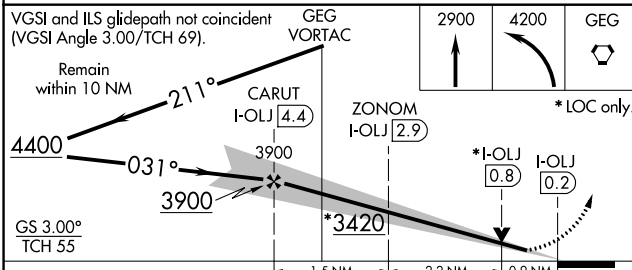
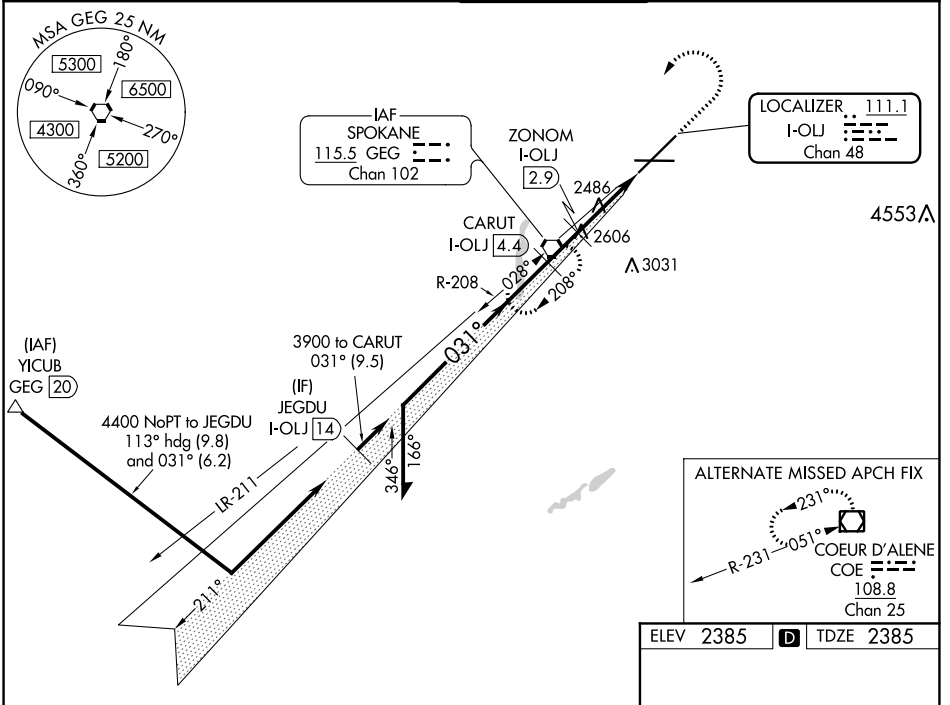


LOC/DME I-OLJ <b>111.1</b> Chan 48	APP CRS <b>031°</b>	Rwy Idg TDZE Apt Elev	<b>11002</b> <b>2385</b> <b>2385</b>
--	------------------------	-----------------------------	--

**ILS or LOC RWY 3**  
SPOKANE INTL (GEG)

DME required for localizer only.		ALSIF-2	MISSED APPROACH: Climb to 2900 then climbing left turn to 4200 direct GEG VORTAC and hold.	
<p>▼ For inop ALS, increase S-LOC 3 Cat C/D visibility to RVR 5500.</p>				
ATIS <b>124.325 254.375</b>	SPOKANE APP CON <b>123.75 282.25 (205°-025°)</b> <b>133.35 263.0 (026°-204°)</b>	SPOKANE TOWER <b>118.3 278.3</b>	GND CON <b>121.9 348.6</b>	CLNC DEL <b>127.55</b>



CATEGORY	A	B	C	D
S-ILS 3	2585/18 200 (200-½)			
S-LOC 3	2740/24	355 (400-½)	2740/30	355 (400-¾)
CIRCLING	2960-1 575 (600-1)	2980-1 595 (600-1)	3300-2 ¾ 915 (1000-2¾)	3400-3 1015 (1100-3)

NW-1, 08 OCT 2020 to 05 NOV 2020

NW-1, 08 OCT 2020 to 05 NOV 2020