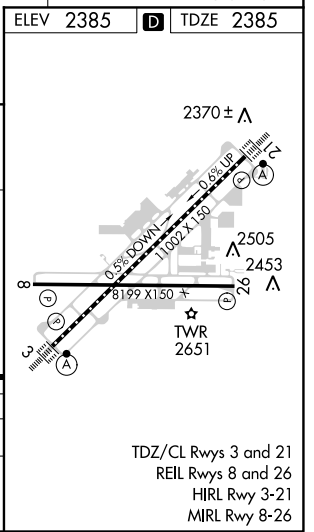
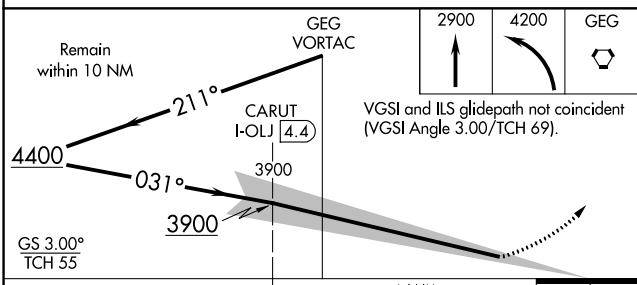
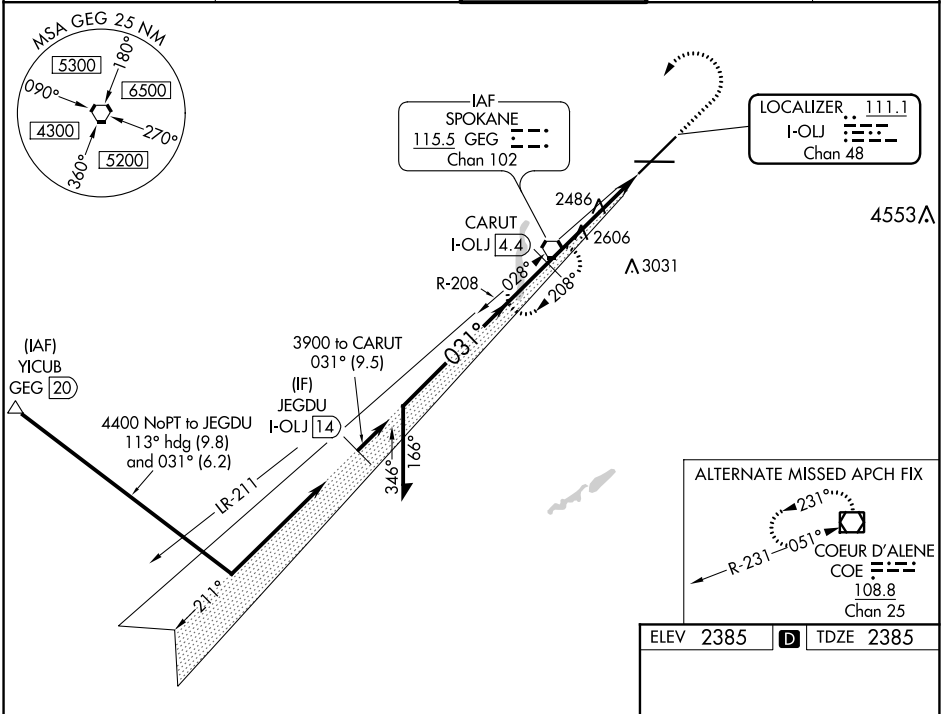


LOC/DME I-OLJ 111.1 Chan 48	APP CRS 031°	Rwy Idg TDZE Apt Elev	11002 2385 2385
--	------------------------	-----------------------------	--

ILS RWY 3 (SA CAT I)

SPOKANE INTL (GEG)

Requires specific OPSPEC, MSPEC, or LOA approval and use of HUD to DH.	ALSIF-2	MISSED APPROACH: Climb to 2900 then climbing left turn to 4200 direct GEG VORTAC and hold.			
	<table border="1"> <tr> <td>ATIS 124.325 254.375</td> <td>SPOKANE APP CON 123.75 282.25 (205°-025°) 133.35 263.0 (026°-204°)</td> <td>SPOKANE TOWER 118.3 278.3</td> <td>GND CON 121.9 348.6</td> <td>CLNC DEL 127.55</td> </tr> </table>	ATIS 124.325 254.375	SPOKANE APP CON 123.75 282.25 (205°-025°) 133.35 263.0 (026°-204°)	SPOKANE TOWER 118.3 278.3	GND CON 121.9 348.6
ATIS 124.325 254.375	SPOKANE APP CON 123.75 282.25 (205°-025°) 133.35 263.0 (026°-204°)	SPOKANE TOWER 118.3 278.3	GND CON 121.9 348.6	CLNC DEL 127.55	



CATEGORY	A	B	C	D
S-ILS 3	RA 154/14 150 DA 2535			
SA CATEGORY I ILS - SPECIAL AIRCREW & AIRCRAFT CERTIFICATION REQUIRED				

NW-1, 08 OCT 2020 to 05 NOV 2020

NW-1, 08 OCT 2020 to 05 NOV 2020