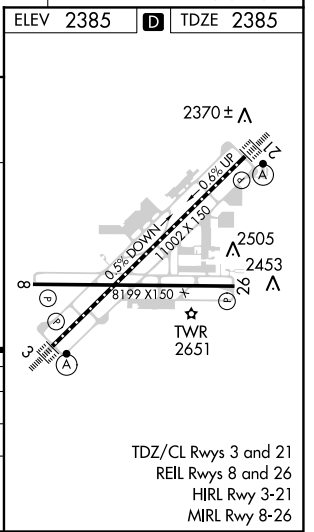
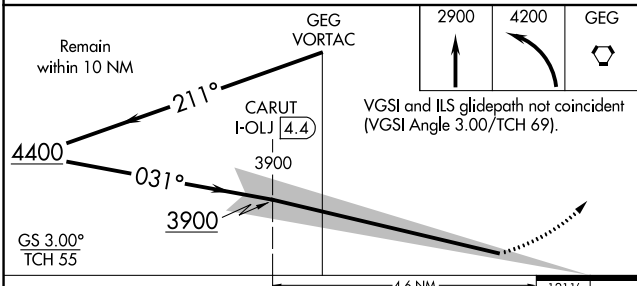
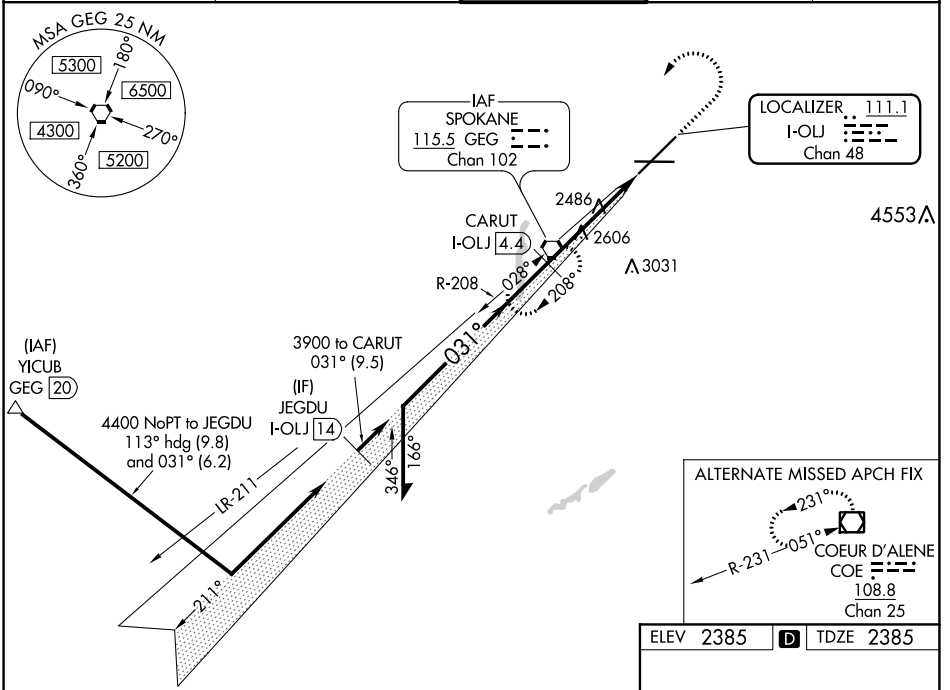


LOC/DME I-OLJ <b>111.1</b> Chan 48	APP CRS <b>031°</b>	Rwy Idg TDZE <b>2385</b> Apt Elev <b>2385</b>
------------------------------------------	------------------------	-----------------------------------------------------

# ILS RWY 3 (CAT II & III)

SPOKANE INTL (GEG)

	ALS-F2		MISSED APPROACH: Climb to 2900 then climbing left turn to 4200 direct GEG VORTAC and hold.	
	ATIS <b>124.325 254.375</b>	SPOKANE APP CON <b>123.75 282.25</b> (205°-025°) <b>133.35 263.0</b> (026°-204°)	SPOKANE TOWER <b>118.3 278.3</b>	GND CON <b>121.9 348.6</b>



CATEGORY	A	B	C	D
S-ILS 3	CAT II RA 104/12 100 DA 2485			
S-ILS 3	CAT III RVR 03			

**CATEGORY II & III ILS - SPECIAL AIRCREW & AIRCRAFT CERTIFICATION REQUIRED**

NW-1, 08 OCT 2020 to 05 NOV 2020

NW-1, 08 OCT 2020 to 05 NOV 2020