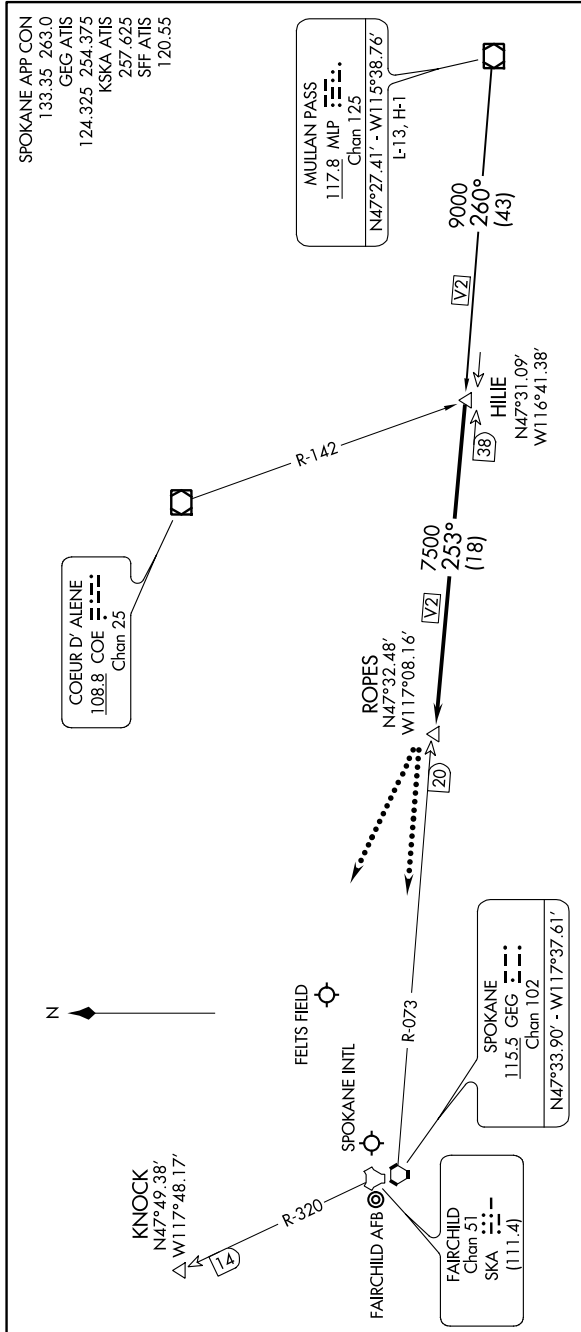


0200 \ \ 05 NOV 2020 to 05 NOV 2020 00 '1-MW



NOTE: DME and RADAR required.  
NOTE: Chart not to scale.

ARRIVAL ROUTE DESCRIPTION

MULLAN PASS TRANSITION (MLP.HILIE2): From over MLP VOR/DME via MLP R-260 to HILIE INT. Thence...

... From over HILIE INT via GEG R-073 to ROPES. Expect radar vectors to final approach course.

LOST COMMUNICATIONS: After ROPES:

Landing Spokane Intl or Felts Field: Proceed to GEG VORTAC via GEG R-073, maintain last assigned altitude to GEG.

Landing Fairchild AFB: Proceed to KNOCK via direct, maintain last assigned altitude to KNOCK.

NW-1, 08 OCT 2020 to 05 NOV 2020