

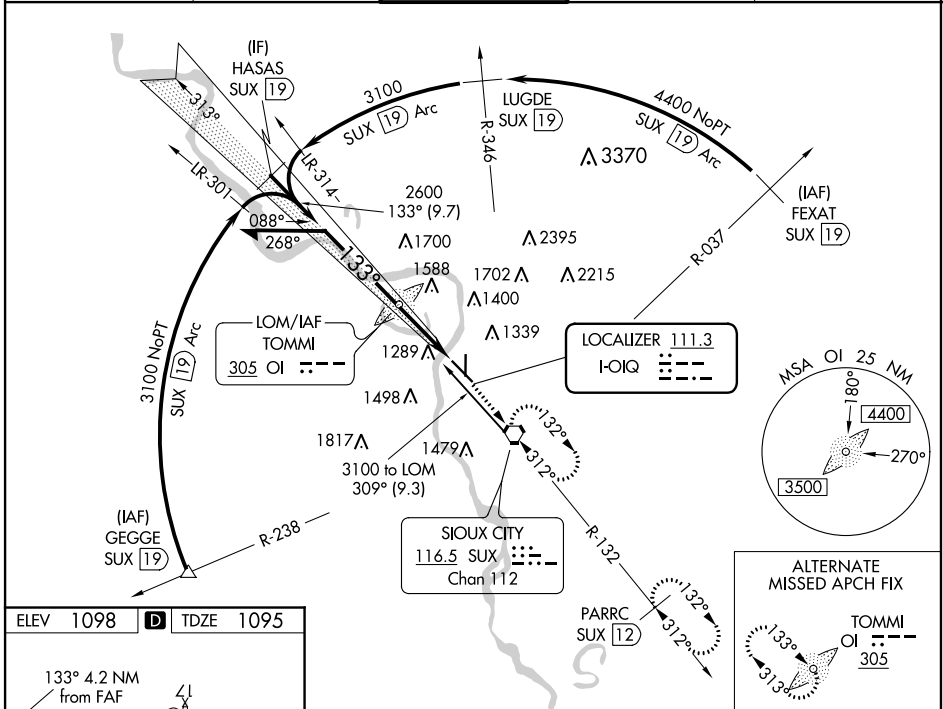
LOC I-OIG 111.3	APP CRS 133°	Rwy Idg 9002
	TDZE 1095	
	Apt Elev 1098	

ILS or LOC RWY 13

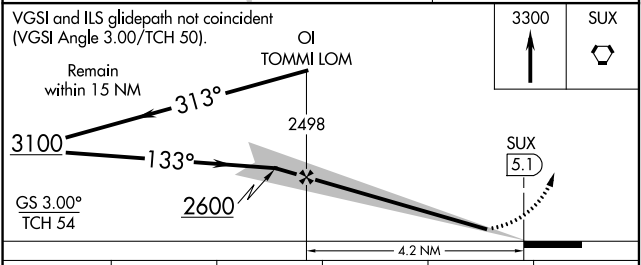
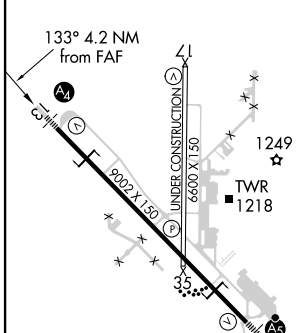
SIoux GATEWAY/BRIGADIER GENERAL BUD DAY FIELD (SUX)

ADF or DME required for procedure entry.		MALS	MISSED APPROACH: Climb to 3300 direct SUX VORTAC and hold, continue climb-in-hold to 3300 (TACAN aircraft continue on SUX VORTAC R-132 to PARRC/12 DME and hold southeast, right turn, 312° inbound).
<p>⚠ Inop table does not apply to S-ILS 13 all Cats. For inop ALS increase S-LOC 13 Cat E visibility to 1½ SM.</p>			

ATIS 119.45 270.8	SIoux CITY APP CON * 124.6 307.0	SIoux CITY TOWER * 118.7 (CTAF) 254.3	GND CON 121.9 348.6	UNICOM 122.95
-----------------------------	--	---	-------------------------------	-------------------------



ELEV 1098	TDZE 1095
-----------	-----------



CATEGORY	A	B	C	D	E
S-ILS 13	1295/40 200 (200-¾)				
S-LOC 13	1580/40	485 (500-¾)	1580/60 485 (500-1¼)		
CIRCLING	1640-1 542 (600-1)	1700-1 602 (700-1)	1700-1¾ 602 (700-1¾)	1840-2½ 742 (800-2½)	2000-3 902 (1000-3)

ILS or LOC RWY 13

NC-3, 08 OCT 2020 to 05 NOV 2020

NC-3, 08 OCT 2020 to 05 NOV 2020