

# RNAV (RNP) Z RWY 10R

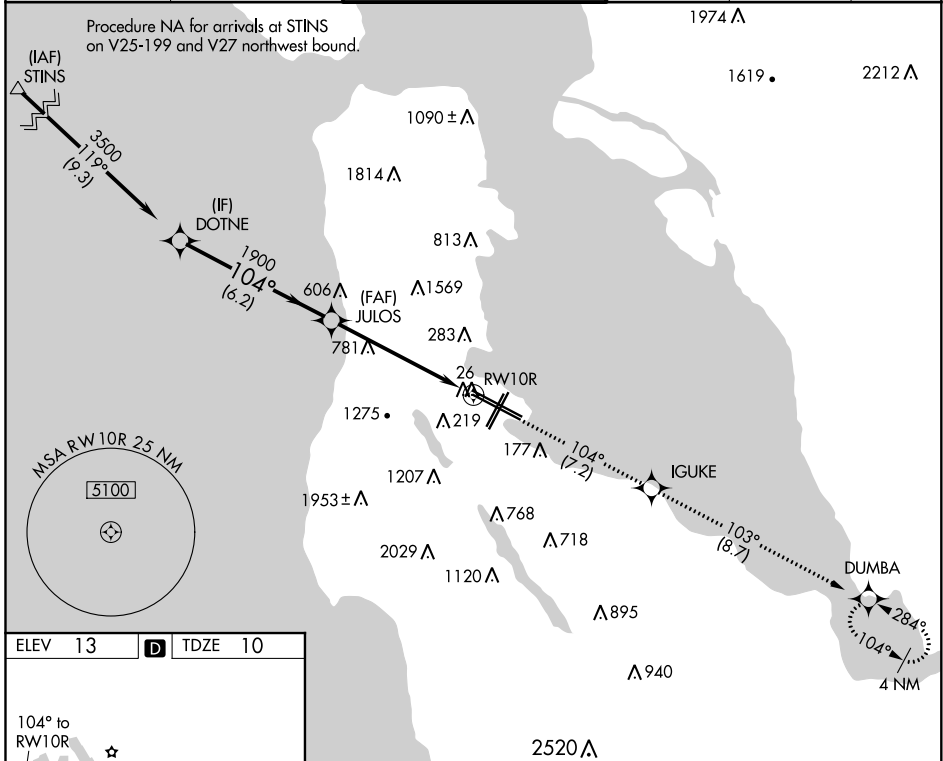
SAN FRANCISCO INTL (SFO)

APP CRS	Rwy Idg	<b>10704</b>
<b>104°</b>	TDZE	<b>10</b>
	Apt Elev	<b>13</b>

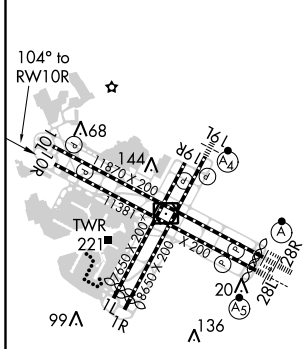
**⚠** For uncompensated Baro-VNAV systems, procedure NA below 2°C (36°F) or above 54°C (130°F). GPS required. When VGSi inop, procedure NA at night.

**⚠** MISSED APPROACH: Climb to 3600 on track 104° to IGUKE and on track 103° to DUMBA and hold.

D-ATIS <b>113.7 115.8</b> <b>118.85</b>	NORCAL APP CON <b>134.5 338.2</b>	SAN FRANCISCO TOWER <b>120.5 269.1</b>	GND CON <b>121.8</b>	CLNC DEL <b>118.2</b>	CPDLC
---	--------------------------------------	---	-------------------------	--------------------------	-------



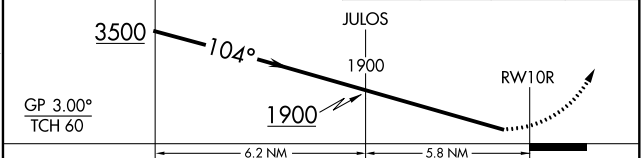
ELEV 13	<b>D</b>	TDZE 10
---------	----------	---------



TDZ/CL Rwy 19L and 28R
REIL Rwy 1L, 1R and 10L
HIRL all Rwy

VGSi and RNAV glidepath not coincident (VGSi Angle 3.00/TCH 68).

3600 tr 104°	IGUKE	DUMBA
	tr 103°	



CATEGORY	A	B	C	D
RNP 0.20 DA		396-1¼	386 (400-1¼)	
RNP 0.30 DA		1108-4	1098 (1100-4)	

**AUTHORIZATION REQUIRED**

SW-2, 08 OCT 2020 to 05 NOV 2020

SW-2, 08 OCT 2020 to 05 NOV 2020