

RNAV (RNP) Y RWY 28R

SAN FRANCISCO INTL (SFO)

APP CRS	Rwy Idg	11236
284°	TDZE	13
	Apt Elev	13

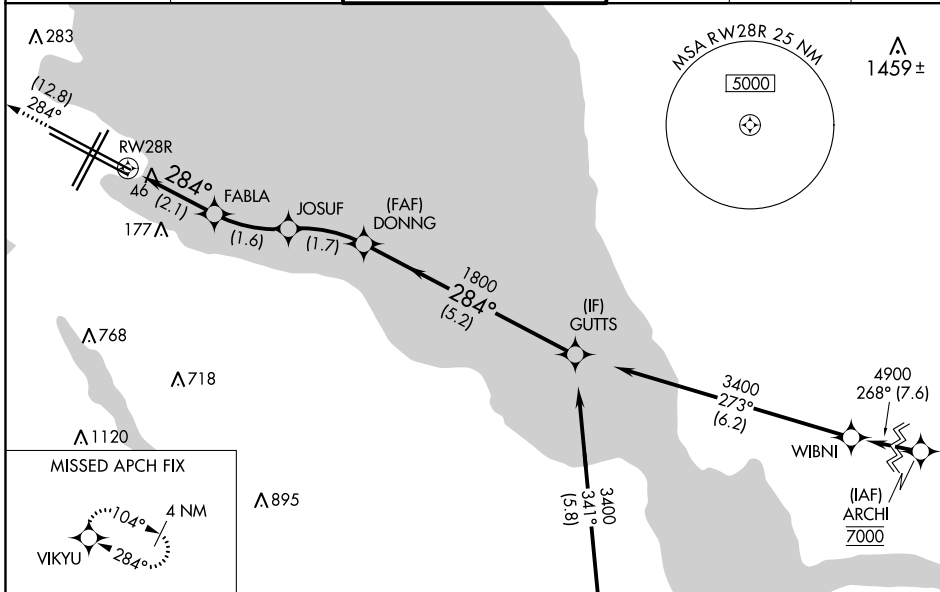
RNP AR APCH, RF required.

▼ For uncompensated Baro-VNAV systems, procedure NA below 3°C or above 54°C. For inop ALS, increase RNP 0.11 all Cats visibility to RVR 4000 and RNP 0.30 all Cats visibility to RVR 4500.

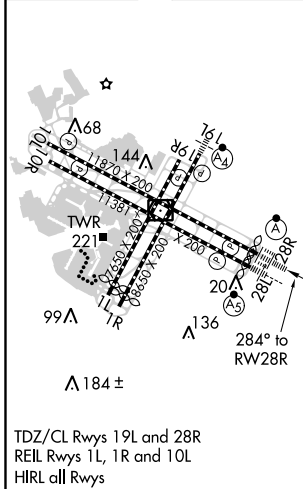
ALSF-2

MISSED APPROACH: Climb to 3000 on track 284° to VIKYU and hold.
 * Missed approach requires minimum climb of 250 feet per NM to 1600.
 # Missed approach requires minimum climb of 350 feet per NM to 2100.

D-ATIS 113.7 115.8 118.85	NORCAL APP CON 134.5 338.2	SAN FRANCISCO TOWER 120.5 269.1	GND CON 121.8	CLNC DEL 118.2	CPDLC
---	--------------------------------------	---	-------------------------	--------------------------	-------



ELEV 13	D	TDZE 13
---------	----------	---------



3000	VIKYU	VGSI and RNAV glidepath not coincident (VGSI Angle 3.00/TCH 68)	GUTTS
tr 284°			
	FABLA	JOSUF	DONNG
	743	1264	1800
	RWY 28R		
	284°		284°
	284°		1800
	-2.1 NM	-1.6 NM	-1.7 NM
			-5.2 NM
CATEGORY	A	B	C
RNP 0.11 DA*	263/24		250 (300-½)
RNP 0.30 DA#	326/24		313 (400-½)
			D
			GP 3.00° TCH 55
AUTHORIZATION REQUIRED			

SW-2, 08 OCT 2020 to 05 NOV 2020

SW-2, 08 OCT 2020 to 05 NOV 2020