

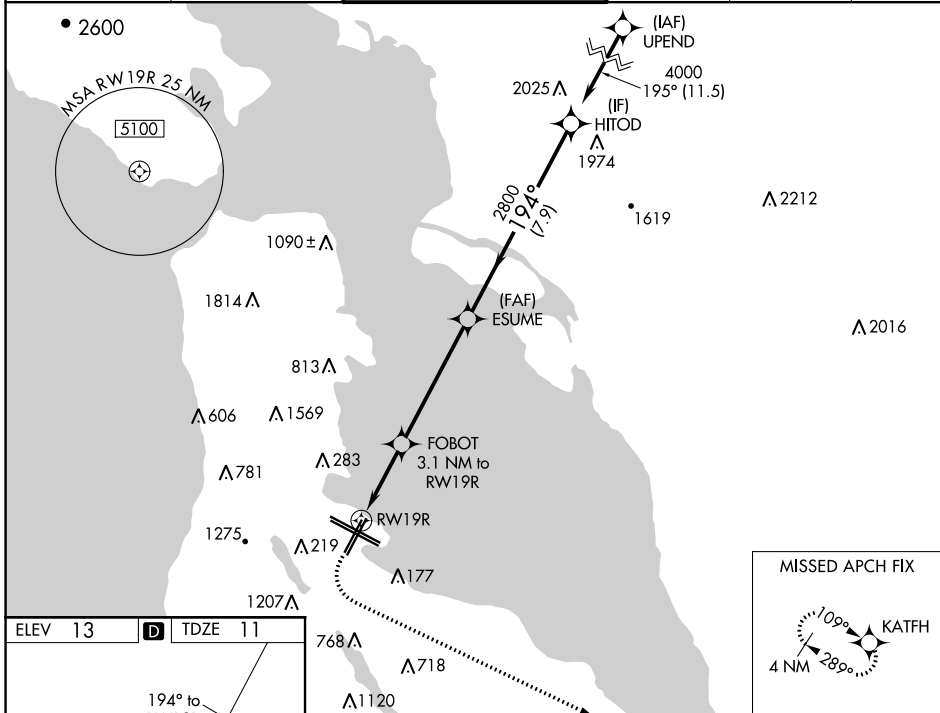
WAAS CH <b>53533</b> <b>W19B</b>	APP CRS <b>194°</b>	Rwy Idg TDZE Apt Elev	<b>7650</b> <b>11</b> <b>13</b>
--	------------------------	-----------------------------	---------------------------------------

# RNAV (GPS) RWY 19R

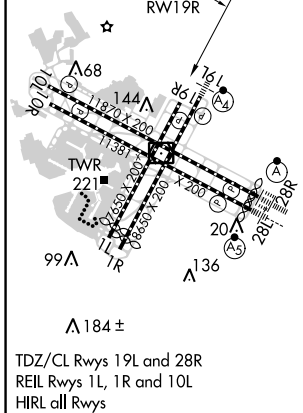
SAN FRANCISCO INTL (SFO)

RNP APCH.	<p>▼ LNAV procedure NA during simultaneous operations. For uncompensated Baro-VNAV systems, LNAV/VNAV NA below 3°C or above 42°C. Simultaneous approach authorized. Simultaneous operations require use of vertical guidance; maintain last assigned altitude until established on glidepath. Simultaneous approach NA below 28°C (52°F).</p>	MISSED APPROACH: Climb to 600 then climbing left turn to 3000 direct KATFH and hold.
-----------	---	--

D-ATIS <b>113.7 115.8</b> <b>118.85</b>	NORCAL APP CON <b>134.5 338.2</b>	SAN FRANCISCO TOWER <b>120.5 269.1</b>	GND CON <b>121.8</b>	CLNC DEL <b>118.2</b>	CPDLC
---	--------------------------------------	---	-------------------------	--------------------------	-------



ELEV 13	<b>D</b>	TDZE 11
---------	----------	---------



600	3000	KATFH	HITOD
*LNAV only.			
RWY 19R	FOBOT 3.1 NM to RWY 19R	ESUME 2800	4000
1100*	1.9 NM to RWY 19R	2800	194°
1.9 NM	1.2 NM	5.1 NM	7.9 NM
GP 3.15°	TCH 55		
CATEGORY	A	B	C
LPV DA	382/55 371 (400-1)		
LNAV/VNAV DA	449-1¼ 438 (500-1¼)		
LNAV MDA	660/55	649 (700-1)	660-1⅞ 649 (700-1⅞)

SW-2, 08 OCT 2020 to 05 NOV 2020

SW-2, 08 OCT 2020 to 05 NOV 2020