

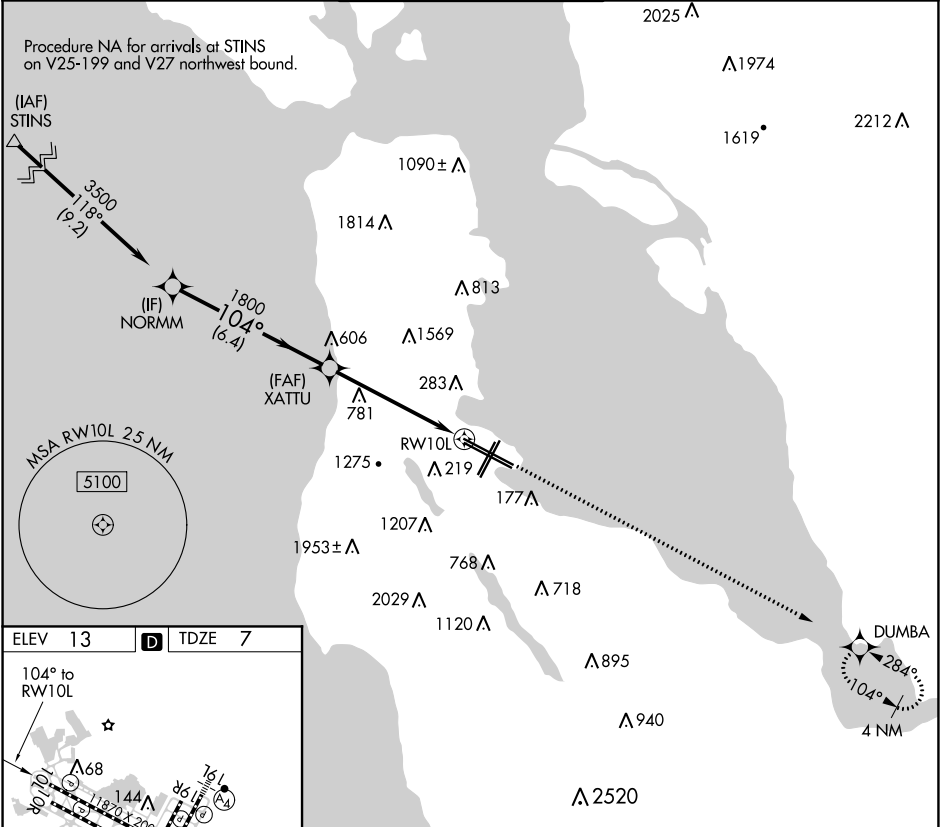
# RNAV (GPS) RWY 10L

## SAN FRANCISCO INTL (SFO)

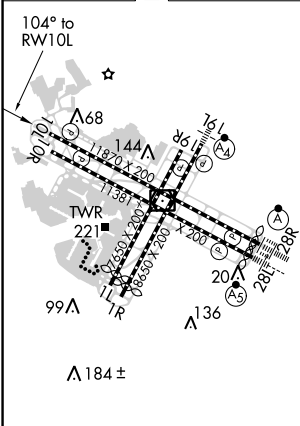
APP CRS <b>104°</b>	Rwy Idg <b>11193</b> TDZE <b>7</b> Apt Elev <b>13</b>
------------------------	---

<p><b>▽</b> DME/DME RNP-0.3 NA. <b>△</b> Helicopter visibility reduction below RVR 4000 NA.</p>	MISSED APPROACH: Climb to 4000 direct DUMBA and hold.
---	---

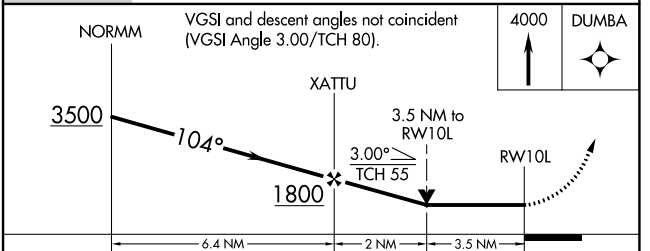
D-ATIS <b>113.7 115.8</b> <b>118.85</b>	NORCAL APP CON <b>134.5 338.2</b>	SAN FRANCISCO TOWER <b>120.5 269.1</b>	GND CON <b>121.8</b>	CLNC DEL <b>118.2</b>	CPDLC
---	--------------------------------------	---	-------------------------	--------------------------	-------



ELEV 13	<b>D</b>	TDZE 7
---------	----------	--------



TDZ/CL Rws 19L and 28R  
REIL Rws 1L, 1R, and 10L  
HIRL all Rws



CATEGORY	A	B	C	D
LNAV MDA	1200/60 1193 (1200-1/4)	1200-1/2 1193 (1200-1/2)	1200-3	1193 (1200-3)

SW-2, 08 OCT 2020 to 05 NOV 2020

SW-2, 08 OCT 2020 to 05 NOV 2020