

LOC/DME I-SFO	APP CRS	Rwy Idg	10275
109.55	284°	TDZE	13
Chan 32 (Y)		Apt Elev	13

ILS or LOC RWY 28L

SAN FRANCISCO INTL (SFO)

RNAV 1- GPS or RADAR required for procedure entry. DME required.

MAJORS

⚠ Circling NA to Rwy's 10L, 10R, 19L, and 19R. Circling Rwy 1L, 1R NA at night. LOC procedure NA during simultaneous operations. Simultaneous approach authorized. Simultaneous operations require use of vertical guidance; maintain last assigned altitude until established on glideslope.

RVR 1800 authorized with use of FD or AP or HUD to DA.

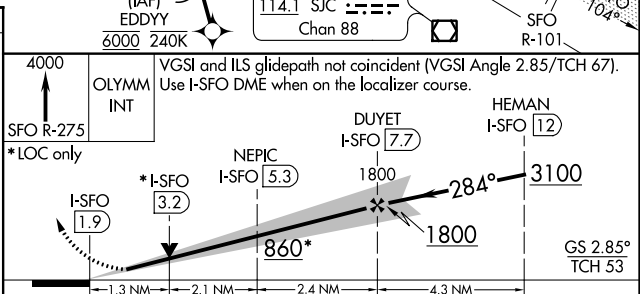
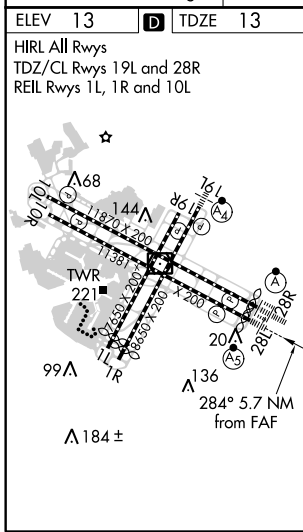
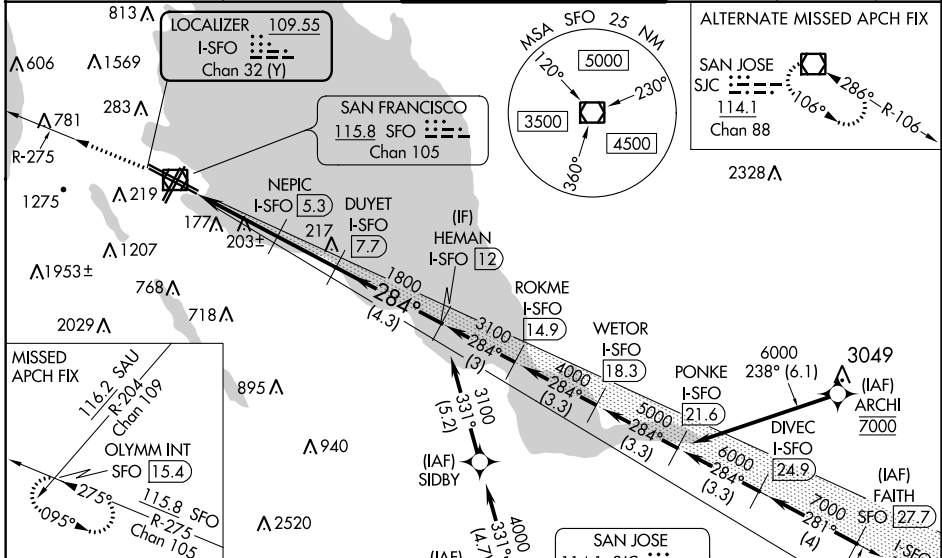
For inop ALS, increase S-ILS 28L all Cats visibility to 2 1/2 SM.

****** For inop ALS increase S-LOC 28L Cat C/D visibility to 2 1/2 SM.

MISSED APPROACH: Climb to 4000 on SFO VOR/DME R-275 to OLYMM INT/SFO 15.4 DME and hold, continue climb-hold to 4000.

† Missed approach requires minimum climb of 330 feet per NM to 1600.

D-ATIS	NORCAL APP CON	SAN FRANCISCO TOWER	GND CON	CLNC DEL	CPDLC
113.7 115.8 118.85	134.5 338.2	120.5 269.1	121.8	118.2	



CATEGORY	A	B	C	D
S-ILS 28L †	213/24 200 (200-1/2)			
S-ILS 28L ##	789-1 3/4 776 (800-1 3/4)			
S-LOC 28L †	460/24	447 (500-1/2)	460/45	447 (500-7/8)
S-LOC 28L **	860/24 847 (900-1/2)	860/40 847 (900-3/4)	860-1 7/8	847 (900-1 7/8)
C CIRCLING	860-1 1/4 847 (900-1/4)	960-1 1/4 947 (1000-1/4)	1560-3 1547 (1600-3)	NA

SW-2, 08 OCT 2020 to 05 NOV 2020

SW-2, 08 OCT 2020 to 05 NOV 2020