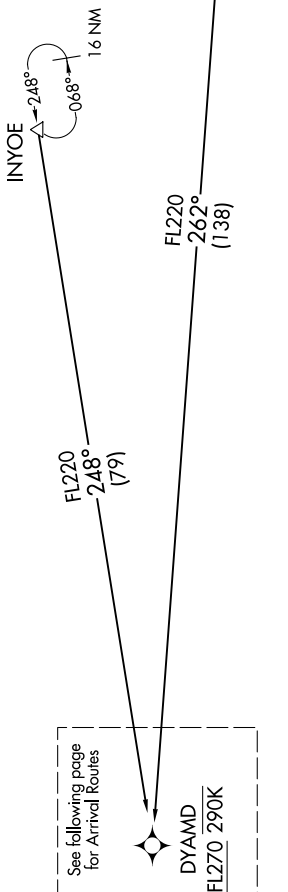


DYAMD FIVE ARRIVAL (RNAV) Transition Routes

OAKLAND CENTER
134.37 281.5
NORCAL APP CON
128.325 254.3
D-ATIS
113.7 115.8 118.85
SAN FRANCISCO TOWER
120.5 269.1
GND CON
121.8



See following page
for Arrival Routes

DYAMD
FL270 290K

- NOTE: RNAV 1.
- NOTE: DME/DME/IRU or GPS required.
- NOTE: Expect to receive "descend via" clearance from Oakland Center. Northern California TRACON will assign landing runway.
- NOTE: RADAR required for non-GPS equipped aircraft.

INYOE TRANSITION (INYOE.DYAMD5)
RUSME TRANSITION (RUSME.DYAMD5)

(CONTINUED ON FOLLOWING PAGE)

NOTE: Chart not to scale.