

|               |             |          |             |
|---------------|-------------|----------|-------------|
| LOC/DME I-SAN | APP CRS     | Rwy Idg  | <b>7280</b> |
| <b>111.55</b> | <b>095°</b> | TDZE     | <b>17</b>   |
| Chan 52 (Y)   |             | Apt Elev | <b>17</b>   |

# ILS Y or LOC Y RWY 9

SAN DIEGO INTL (SAN)

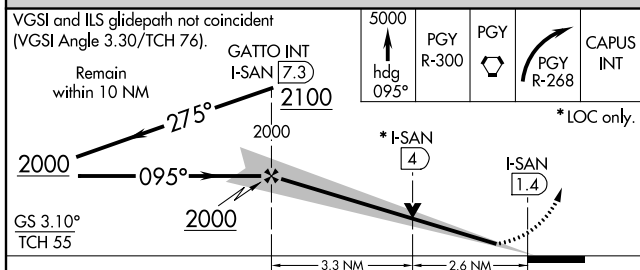
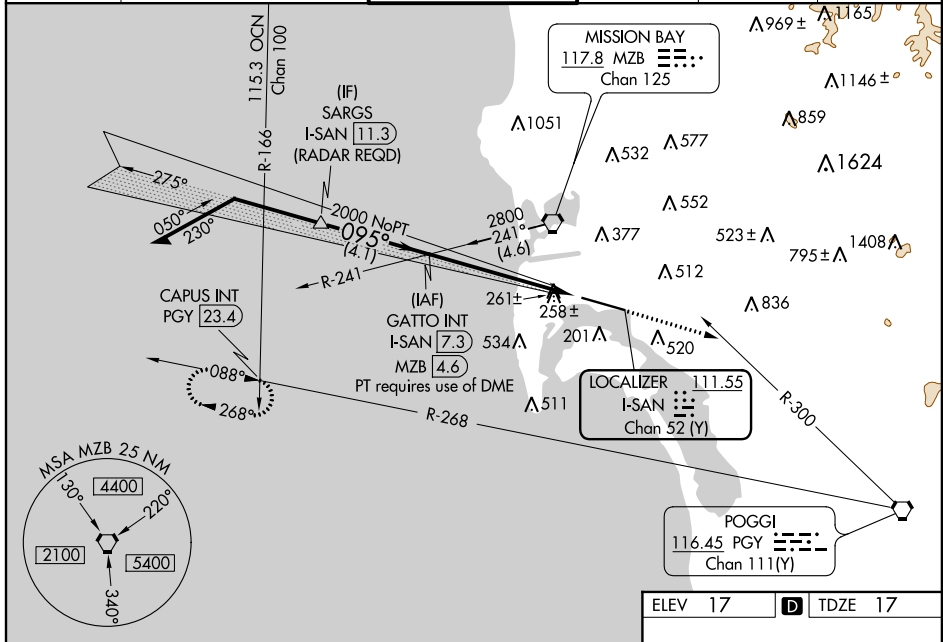
**⚠** Circling NA north of Rwy 9-27. Autopilot coupled approach NA below 530. When Circling to Rwy 27 at night, operational VGSI required, remain on or above VGSI glidepath until threshold. For inop ALS, increase S-ILS 9 all Cats visibility to 2 1/2 SM. Rwy 9 helicopter visibility reduction below RVR 4000 NA. # Inop table does not apply to S-ILS 9.

MALSR



MISSED APPROACH: Climb to 5000 on heading 095° and on PGY VORTAC R-300 to PGY VORTAC, then right turn on PGY VORTAC R-268 to CAPUS INT/23.4 DME and hold. # Missed approach requires minimum climb of 270 feet per NM to 4000.

|              |   |                      |              |              |       |
|--------------|---|----------------------|--------------|--------------|-------|
| D-ATIS       | SOCAL APP CON   | LINDBERGH TOWER      | GND CON      | CLNC DEL     | CPDLC |
| <b>134.8</b> | <b>119.6 363.1 (WEST)</b><br><b>124.35 279.625 (EAST)</b> | <b>118.3 338.225</b> | <b>123.9</b> | <b>125.9</b> |       |



|                                      |                          |
|--------------------------------------|--------------------------|
| ELEV 17                              | <b>D</b> TDZE 17         |
|                                      |                          |
| TDZ/CL Rwy 9 and 27<br>HIRL Rwy 9-27 |                          |
| FAF to MAP 5.9 NM                    |                          |
| Knots                                | 60 90 120 150 180        |
| Min:Sec                              | 5:54 3:56 2:57 2:22 1:58 |

| CATEGORY          | A         | B                | C                             | D                     |
|-------------------|-----------|------------------|-------------------------------|-----------------------|
| S-ILS 9#          |           | 258/40           | 241 (300-3/4)                 |                       |
| S-ILS 9           |           | 751-2            | 734 (800-2)                   |                       |
| S-LOC 9           | 960/40    | 943 (1000-3/4)   | 960-2                         | 943 (1000-2)          |
| <b>C</b> CIRCLING | 960-1 1/4 | 943 (1000-1 1/4) | 960-2 3/4<br>943 (1000-2 3/4) | 960-3<br>943 (1000-3) |

SW-3, 08 OCT 2020 to 05 NOV 2020

SW-3, 08 OCT 2020 to 05 NOV 2020