

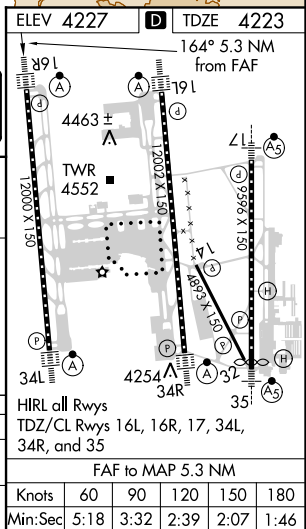
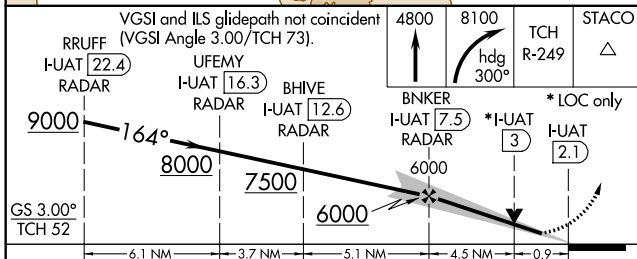
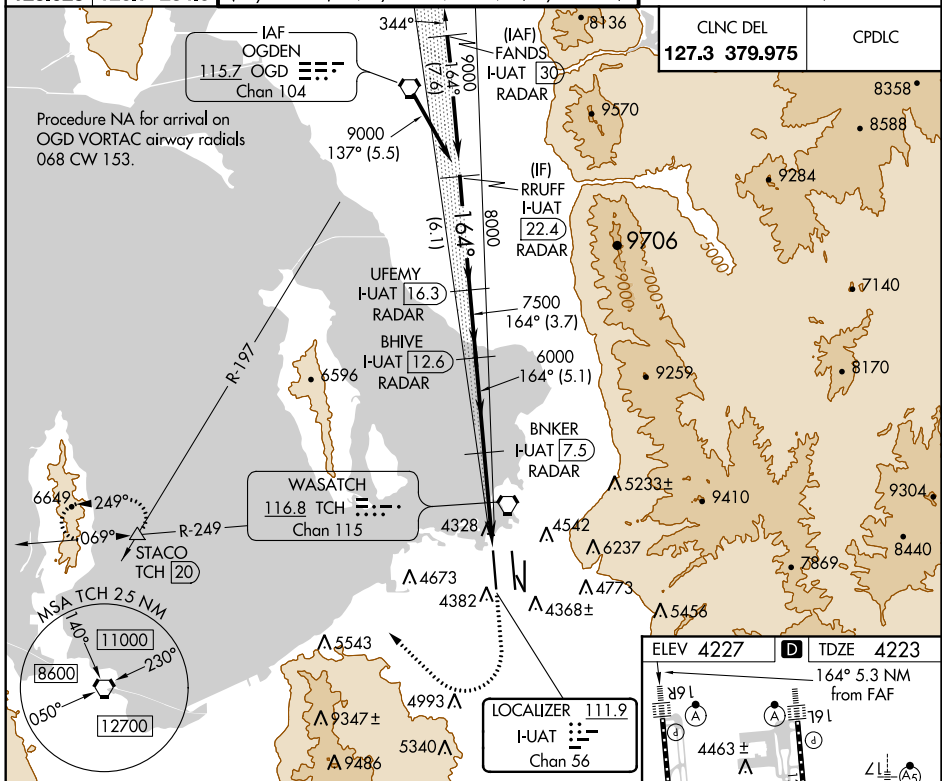
LOC/DME I-UAT 111.9 Chan 56	APP CRS 164°	Rwy ldg 12000 TDZE 4223 Apt Elev 4227
---	------------------------	--

ILS or LOC RWY 16R

SALT LAKE CITY INTL (SLC)

DME or RADAR required.	ALSF-2	MISSED APPROACH: Climb to 4800 then climbing right turn to 8100 on heading 300° and on TCH VORTAC R-249 to STACO INT/TCH 20 DME and hold.
<p>Simultaneous approach authorized. For inop ALS, increase S-LOC 16R Cat C and D visibilities to RVR 5500.</p>		

D-ATIS 124.75 125.625	SALT LAKE CITY APP CON 125.7 284.6	SALT LAKE CITY TOWER 119.05 257.8 (Rwy 16L-34R) 118.3 257.8 (Rwys 14-32, 17-35) 132.65 336.4 (Rwy 16R-34L)			GND CON 121.9 348.6 (Rwys 14-32, 17-35) 123.775 348.6 (Rwys 16L-34R, 16R-34L)
---	--	--	--	--	--



CATEGORY	A	B	C	D
S-ILS 16R	4423/18		200 (200-½)	
S-LOC 16R	4580/24	357 (400-½)	4580/30	4580/40
			357 (400-¾)	357 (400-¾)

SW-4, 08 OCT 2020 to 05 NOV 2020

SW-4, 08 OCT 2020 to 05 NOV 2020