

LOC/DME I-SLC <b>109.5</b> Chan <b>32</b>	APP CRS <b>344°</b>	Rwy Idg <b>12002</b> TDZE <b>4222</b> Apt Elev <b>4227</b>
---	------------------------	--

# ILS RWY 34R (CAT II & III)

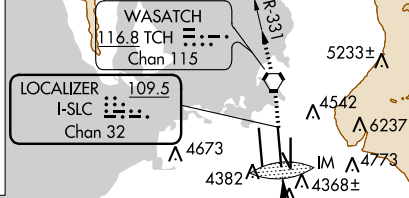
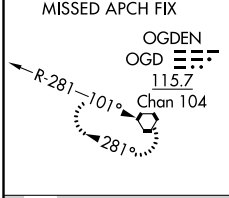
SALT LAKE CITY INTL (SLC)

DME or RADAR Required.

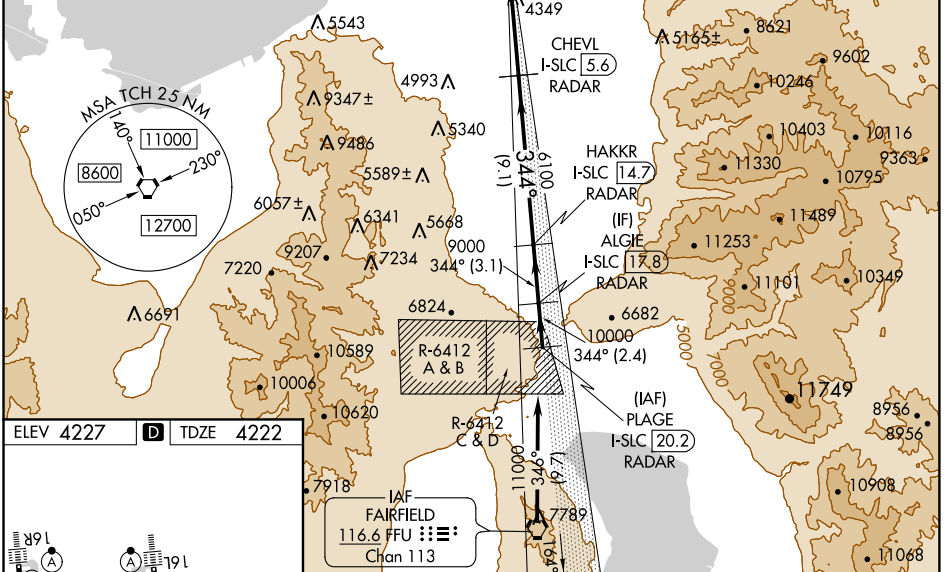
Simultaneous approach authorized.  
 CAT II: RVR 1000 authorized with specific OPSPEC, MSPEC,  
 or LOA approval and use of autoland or HUD to touchdown.

ALSF-2  
 MISSED APPROACH: Climb to 9000  
 direct TCH VORTAC and on TCH VORTAC  
 R-331 to OGD VORTAC and hold.

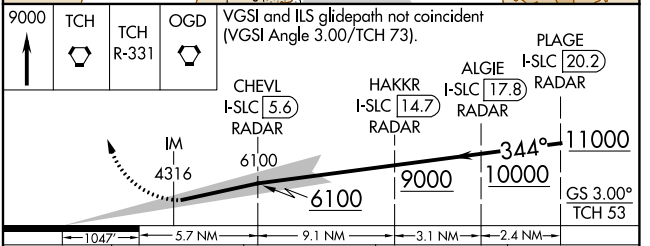
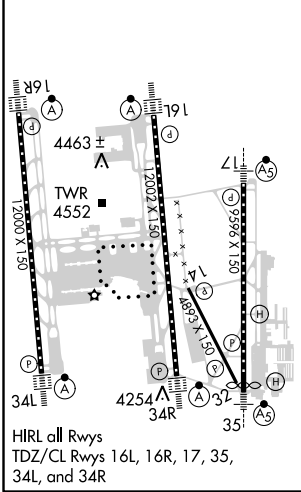
D-ATIS <b>124.75</b> <b>125.625</b>	SALT LAKE CITY APP CON <b>125.7 284.6</b>	SALT LAKE CITY TOWER <b>119.05 257.8 118.3 257.8</b> (Rwys 16L-34R) (Rwys 14-32, 17-35)	<b>132.65 336.4</b> (Rwy 16R-34L)	GND CON <b>121.9 348.6 123.775 348.6</b> (Rwys 14-32, 17-35) (Rwys 16L-34R, 16R-34L)
---	---	---	--------------------------------------	--



CINC DEL <b>127.3 379.975</b>	CPDLC
----------------------------------	-------



ELEV <b>4227</b>	<b>D</b>	TDZE <b>4222</b>
------------------	----------	------------------



9000	TCH	TCH R-331	OGD	VGSI and ILS glidepath not coincident (VGSI Angle 3.00/TCH 73).	PLAGE I-SLC <b>20.2</b> RADAR
	CHEVL I-SLC <b>5.6</b> RADAR	HAKKR I-SLC <b>14.7</b> RADAR	ALGIE I-SLC <b>17.8</b> RADAR		
	IM 4316	6100	9000	10000	GS 3.00° TCH 53
	1.047	5.7 NM	9.1 NM	3.1 NM	2.4 NM
CATEGORY	A	B	C	D	
S-ILS 34R	CAT II RA 100/12 100 DA 4322				
S-ILS 34R	CAT III RVR 03				

**CATEGORY II & III ILS - SPECIAL AIRCREW & AIRCRAFT CERTIFICATION REQUIRED**

SW-4, 08 OCT 2020 to 05 NOV 2020

SW-4, 08 OCT 2020 to 05 NOV 2020