

ST. JOHNS NINE DEPARTURE

AL-322 (FAA)

PHOENIX SKY HARBOR INTL (PHX)
PHOENIX, ARIZONA

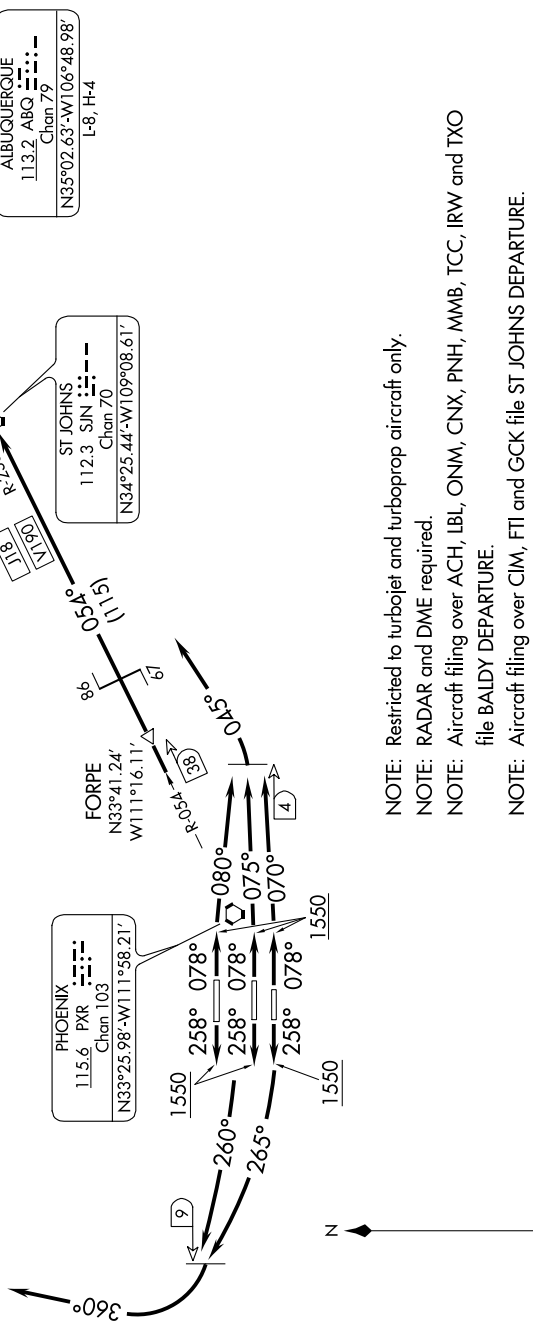
0200 \00 \00Z 2020 to 05 NOV 2020 '7-WS

TOP ALTITUDE:
8000

TAKEOFF MINIMUMS

Rwys 7L, 7R, 8: Standard with minimum climb of 350' per NM to 8000.
Rwys 25L, 25R, 26: Standard with minimum climb of 350' per NM to 8000.

- D-ATIS 127.575
- CLNC DEL 118.1 269.2
- CPDLC
- GND CON 119.75 269.2 (NORTH)
- 132.55 269.2 (SOUTH)
- PHOENIX TOWER 118.7 278.8 (Rwy 8-26)
- 120.9 254.3 (Rwys 7L-25R, 7R-25L)
- PHOENIX DEP CON 119.2 281.45



- NOTE: Restricted to turbojet and turboprop aircraft only.
- NOTE: RADAR and DME required.
- NOTE: Aircraft filing over ACH, LBL, ONM, CNX, PNH, MMB, TCC, IRW and TXO file BALDY DEPARTURE.
- NOTE: Aircraft filing over CIM, FTI and GCK file ST JOHNS DEPARTURE.

(NARRATIVE ON FOLLOWING PAGE)

NOTE: Chart not to scale.

ST. JOHNS NINE DEPARTURE

SW-4, 08 OCT 2020 to 05 NOV 2020