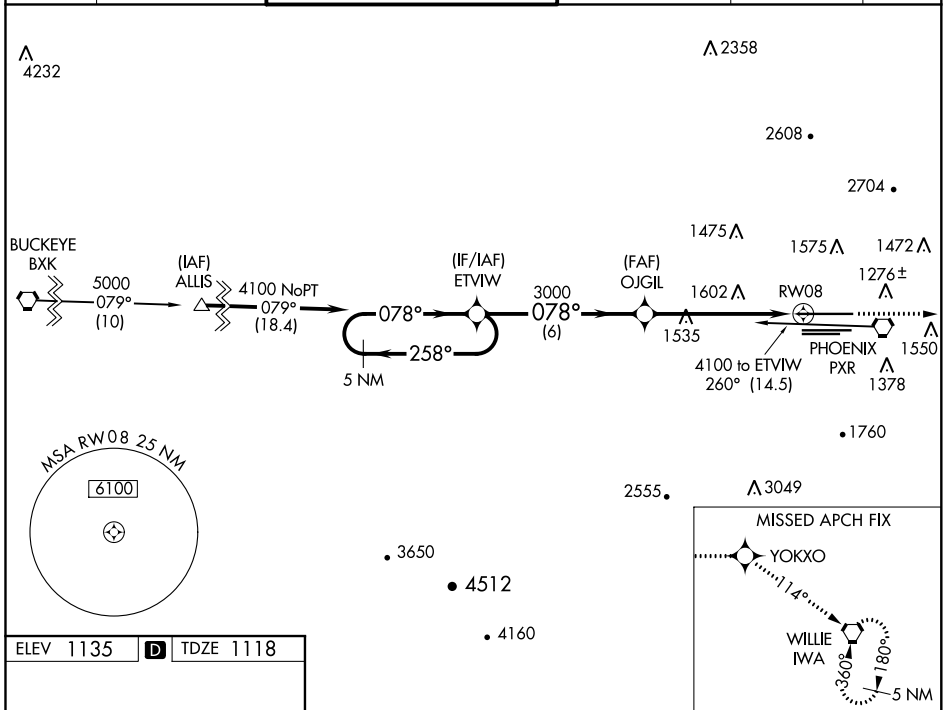


WAAS CH 86611 W08A	APP CRS 078°	Rwy Idg 10591 TDZE 1118 Apt Elev 1135
--	------------------------	--

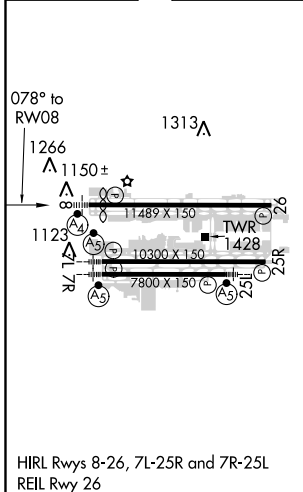
RNAV (GPS) Y RWY 8

PHOENIX SKY HARBOR INTL (PHX)

<p>Inoperative table does not apply. DME/DME RNP-0.3 NA. Rwy 8 helicopter visibility reduction below 1 SM NA.</p>	<p>MALSIF</p>	<p>MISSED APPROACH: Climb to 5000 direct YOKXO and via 114° track to IWA VORTAC and hold.</p>			
		D-ATIS 127.575	PHOENIX APP CON 128.65 353.9	PHOENIX TOWER 118.7 278.8 (Rwy 8-26) 120.9 254.3 (Rwy 7L-25R, 7R-25L)	GND CON 119.75 269.2 (N) 132.55 269.2 (S)



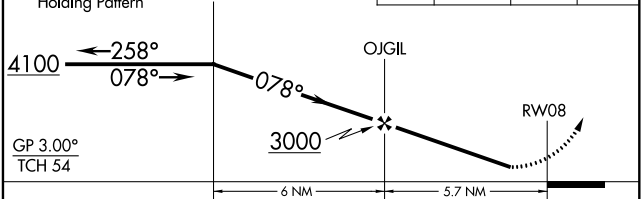
ELEV 1135	D	TDZE 1118
-----------	----------	-----------



VGSI and RNAV glidepath not coincident (VGSI Angle 3.00/TCH 69).

5 NM Holding Pattern

ETVIW



CATEGORY	A	B	C	D
LPV DA	1394-1 276 (300-1)			
LNAV MDA	1860-1 742 (800-1)	1860-1¼ 742 (800-1¼)	1860-2¼ 742 (800-2¼)	1860-2½ 742 (800-2½)
C CIRCLING	1860-1 725 (800-1)	1860-1¼ 725 (800-1¼)	2040-2¾ 905 (1000-2¾)	2560-3 1425 (1500-3)

SW-4, 08 OCT 2020 to 05 NOV 2020

SW-4, 08 OCT 2020 to 05 NOV 2020