


WAAS CH <b>73011</b> <b>W07B</b>	APP CRS <b>078°</b>	Rwy Idg TDZE <b>1116</b> Apt Elev <b>1135</b>
--	------------------------	---

# RNAV (GPS) Y RWY 7R

PHOENIX SKY HARBOR INTL (PHX)

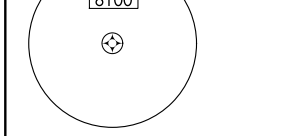
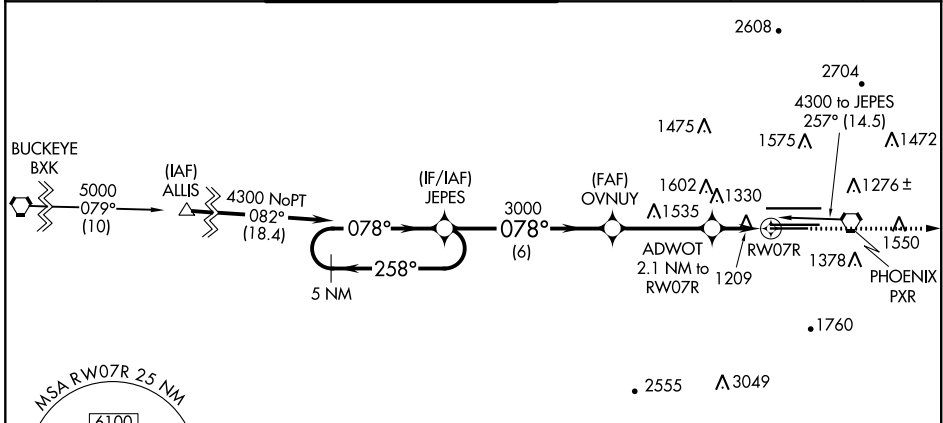
**⚠** For inop ALS, increase visibility LPV all Cats to 3/4 SM, LNAV/VNAV all Cats to 1 1/8 SM, LNAV Cats A/B to 1 SM and C/D to 1 3/8 SM. For uncompensated Baro-VNAV systems, LNAV/VNAV NA below -17°C (2°F) or above 46°C (114°F). DME/DME RNP-0.3 NA. Rwy 7R helicopter visibility reduction below 3/4 SM NA. Simultaneous approach authorized with ILS or LOC Rwy 8. Use of FD or AP providing RNAV track guidance required during simultaneous operations. LNAV procedure NA during simultaneous operations.

**MALSR**

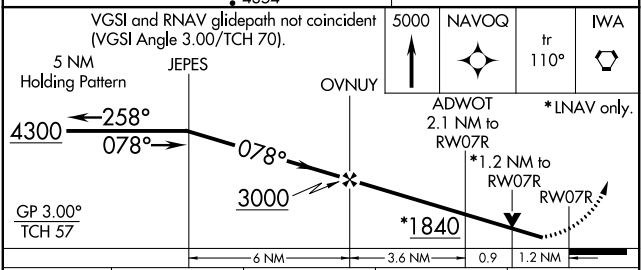
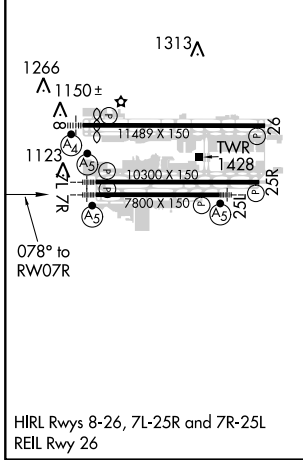


**MISSED APPROACH:** Climb to 5000 direct NAVOQ and via 110° track to IWA VORTAC and hold.

D-ATIS <b>127.575</b>	PHOENIX APP CON <b>128.65 353.9</b>	PHOENIX TOWER <b>118.7 278.8</b> (Rwy 8-26) <b>120.9 254.3</b> (Rwy 7L-25R, 7R-25L)	GND CON <b>119.75 269.2</b> (N) <b>132.55 269.2</b> (S)	CLNC DEL <b>118.1 269.2</b>	CPDLC
--------------------------	--	---	---	--------------------------------	-------



ELEV 1135	<b>D</b>	TDZE 1116
-----------	----------	-----------



CATEGORY	A	B	C	D
LPV DA		1390-3/4	274 (300-3/4)	
LNAV/VNAV DA		1520-1	404 (400-1)	
LNAV MDA	1580-3/4	464 (500-3/4)	1580-1	464 (500-1)
<b>C</b> CIRCLING	1740-1	605 (700-1)	2040-2 3/4 905 (1000-2 3/4)	2560-3 1425 (1500-3)

SW-4, 08 OCT 2020 to 05 NOV 2020

SW-4, 08 OCT 2020 to 05 NOV 2020