

APP CRS	Rwy Idg	10300
258°	TDZE	1134
	Apt Elev	1135

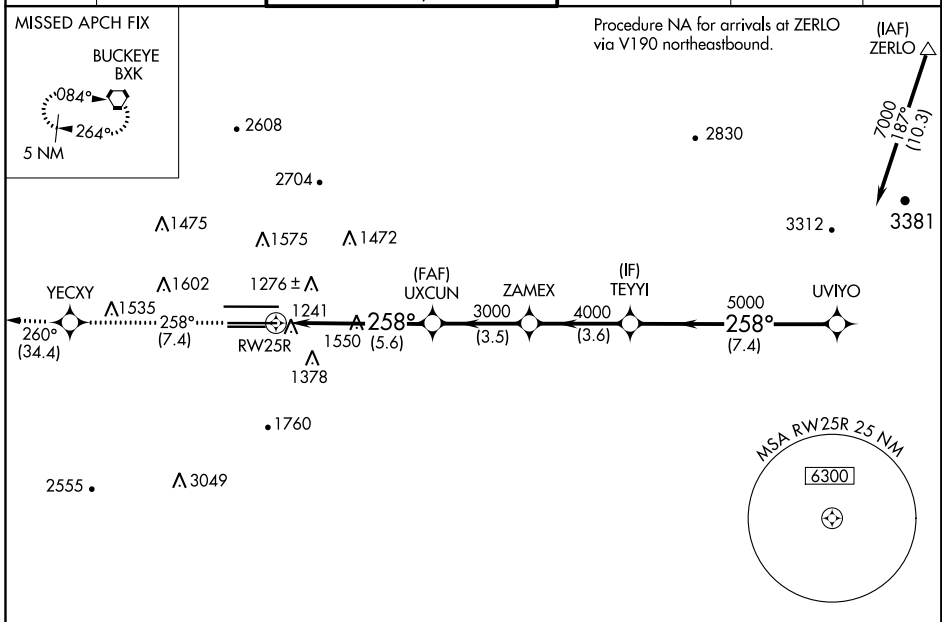
RNAV (RNP) Z RWY 25R

PHOENIX SKY HARBOR INTL (PHX)

Visibility reduction by helicopters NA. GPS required. For uncompensated Baro-VNAV systems, procedure NA below 1°C (34°F) or above 46°C (111.6°F). Simultaneous approach authorized with ILS or LOC Rwy 26. Use of FD or AP providing RNAV track guidance required during simultaneous operations.

MISSED APPROACH: Climb to 5000 via track 258° to YECXY and via track 260° to BXX VORTAC and hold.

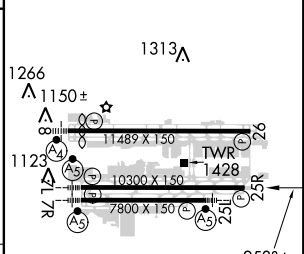
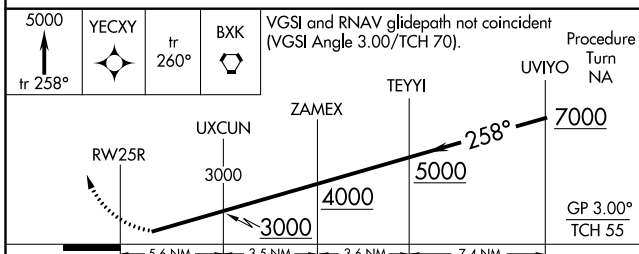
D-ATIS	PHOENIX APP CON	PHOENIX TOWER	GND CON	CLNC DEL	CPDLC
127.575	128.65 353.9	118.7 278.8 (Rwy 8-26) 120.9 254.3 (Rwy 7L-25R, 7R-25L)	119.75 269.2 (N) 132.55 269.2 (S)	118.1 269.2	



SW-4, 08 OCT 2020 to 05 NOV 2020

SW-4, 08 OCT 2020 to 05 NOV 2020

ELEV 1135	D TDZE 1134
-----------	--------------------



CATEGORY	A	B	C	D
RNP 0.20 DA		1597-1½	463 (500-1½)	
RNP 0.30 DA		1622-1¾	488 (500-1¾)	

AUTHORIZATION REQUIRED

HIRL Rwys 8-26, 7L-25R and 7R-25L
REIL Rwy 26