

(MOBIE4.MOBIE) 18088

MOBIE FOUR DEPARTURE

AL-322 (FAA)

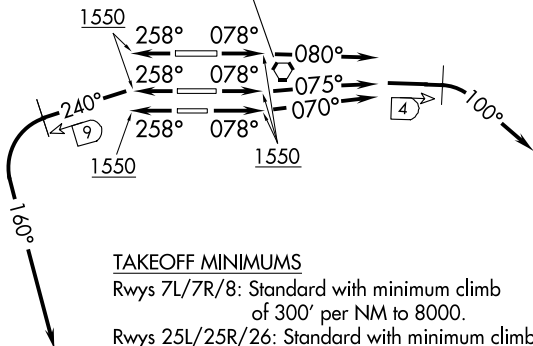
PHOENIX SKY HARBOR INTL (PHX)

PHOENIX, ARIZONA

D-ATIS
 127.575
 CLNC DEL
 118.1 269.2
 CPDLC
 GND CON
 119.75 269.2 (NORTH)
 132.55 269.2 (SOUTH)
 PHOENIX TOWER
 118.7 278.8 (Rwy 8-26)
 120.9 254.3 (Rwys 7L-25R, 7R-25L)
 PHOENIX DEP CON
 126.8 269.6

PHOENIX
 115.6 PXR
 Chan 103
 N33°25.98'-W111°58.21'

**TOP ALTITUDE:
 8000**



GILA BEND
 116.6 GBN
 Chan 113
 N32°57.38'-W112°40.46'

L-5, H-4

R-055
 5900
 *5000
 235°
 (20)

MOBIE
 N33°04.52'
 W112°18.24'

NOTE: Restricted to turbojet and turboprop aircraft only.
 NOTE: DME and RADAR required.

STANFIELD
 114.8 TFD
 Chan 95

NOTE: Chart not to scale.

DEPARTURE ROUTE DESCRIPTION

TAKEOFF RUNWAY 8: Climb heading 078° to 1550, then climbing right turn heading 080°, at 4 DME east of PXR VORTAC, climbing right turn heading 100°. Thence. . .

TAKEOFF RUNWAY 7L: Climb heading 078° to 1550, then climbing left turn heading 075°, at 4 DME east of PXR VORTAC, climbing right turn heading 100°. Thence. . .

TAKEOFF RUNWAY 7R: Climb heading 078° to 1550, then climbing left turn heading 070°, at 4 DME east of PXR VORTAC, climbing right turn heading 100°. Thence. . .

TAKEOFF RUNWAY 25L: Climb heading 258° to 1550, then climbing left turn heading 240°, at 9 DME west of PXR VORTAC, climbing left turn heading 160°. Thence. . .

TAKEOFF RUNWAY 25R: Climb heading 258° to 1550, then climbing left turn heading 240°, at 9 DME west of PXR VORTAC, climbing left turn heading 160°. Thence. . .

TAKEOFF RUNWAY 26: Climb heading 258° to 1550, then climbing left turn heading 240°, at 9 DME west of PXR VORTAC, climbing left turn heading 160°. Thence. . .

. . . maintain 8000, expect RADAR vectors to MOBIE INT thence via (transition). Expect filed altitude 3 minutes after departure.

LOST COMMUNICATIONS: Expect filed altitude 3 minutes after departure.

GILA BEND TRANSITION (MOBIE4.GBN): From over MOBIE INT via GBN R-055 to GBN VORTAC.

MOBIE FOUR DEPARTURE

(MOBIE4.MOBIE) 25JUN15

PHOENIX, ARIZONA

PHOENIX SKY HARBOR INTL (PHX)

SW-4, 08 OCT 2020 to 05 NOV 2020

SW-4, 08 OCT 2020 to 05 NOV 2020