

(ECLPS1.ECLPS) 18144

ECLPS ONE DEPARTURE (RNAV)

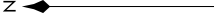
AL-322 (FAA)

PHOENIX SKY HARBOR INTL (PHX)
PHOENIX, ARIZONA

0200 \ 00 \ 00 \ 2020 \ 05 \ 05 \ 00 \ 2020 \ 14 \ 00 \ 00 \ 2020 \ 05 \ 05 \ 00 \ 2020

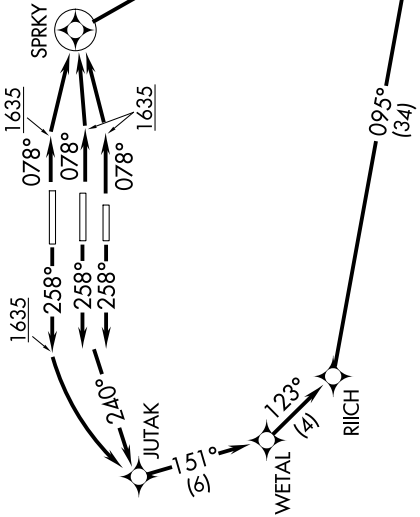
TOP ALTITUDE:
8000

- D-ATIS 127.575
- CUNCDL 118.1 269.2
- CPDLC 119.75 269.2 (NORTH)
- GND CON 132.55 269.2 (SOUTH)
- PHOENIX TOWER 118.7 278.8 (Rwy 8-26)
- PHOENIX DEP CON 120.9 254.3 (Rwys 7L-25R, 7R-25L)
- 126.8 269.6



TAKEOFF MINIMUMS

Rwys 7L/R, 8: Standard with minimum climb of 500' per NM to 1635.
 Rwys 25L/R, 26: Standard with minimum climb of 500' per NM to 1900.



NOTE: Chart not to scale.

DEPARTURE ROUTE DESCRIPTION

TAKEOFF RUNWAYS 7L/R, 8: Climb heading 078° to 1635, then direct to SPRKY, then right turn direct ECLPS. Thence. . . .
 TAKEOFF RUNWAYS 25L/R: Climb heading 258° to intercept course 240° to JUTAK, then on track 151° to WETAL, then on track 123° to RIICH, then on track 095° to ECLPS. Thence. . . .
 TAKEOFF RUNWAY 26: Climb heading 258° to 1635, then left turn direct JUTAK, then on track 151° to WETAL, then on track 123° to RIICH, then on track 095° to ECLPS. Thence. . . .
 . . . on track 111° to KATMN. Then on (transition), expect filed altitude 3 minutes after departure.

PHASE TRANSITION (ECLPS1.PHASE)

- NOTE: RNAV 1.
- NOTE: Turbojets and turboprops only.
- NOTE: RADAR required.
- NOTE: DME/DME/IRU or GPS required.
- NOTE: For non-GPS equipped aircraft, TFD and DUG DMEs must be operational.

ECLPS ONE DEPARTURE (RNAV)
(ECLPS1.ECLPS) 24MAY18

PHOENIX, ARIZONA
PHOENIX SKY HARBOR INTL (PHX)

SW-4, 08 OCT 2020 to 05 NOV 2020