

# BUCKEYE FOUR DEPARTURE

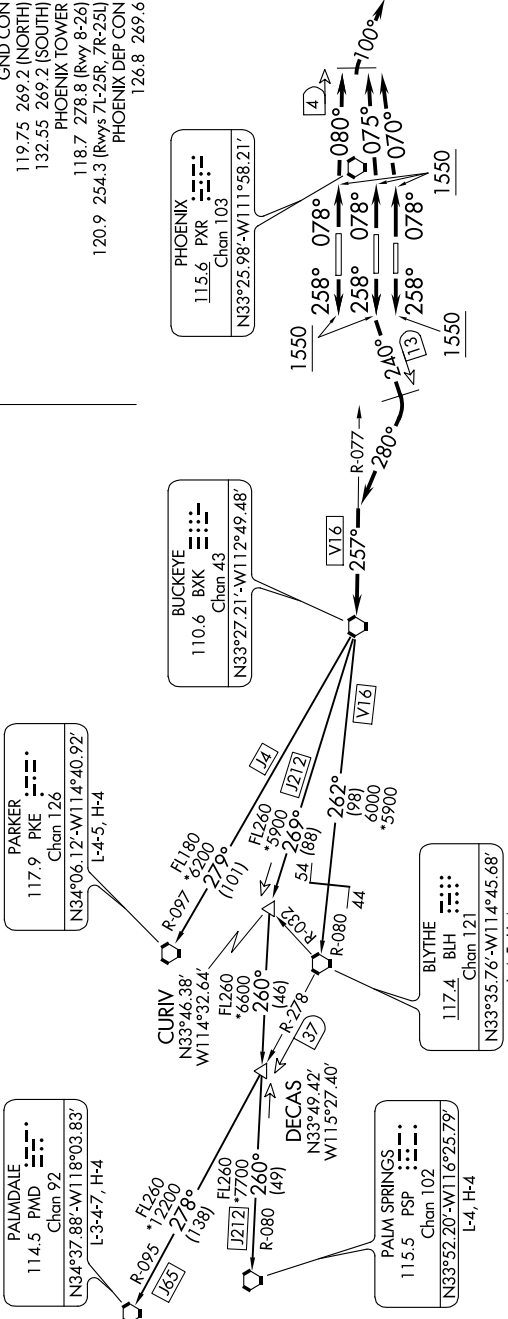
AL-322 (FAA)

PHOENIX SKY HARBOR INTL (PHX)  
PHOENIX, ARIZONA

0200 \ \ 08 OCT 2020 to 05 NOV 2020 '4-W

**TOP ALTITUDE:**  
**8000**

- D-AITS 127.575
- CLINC DEL 118.1 269.2
- CPDIC
- GND CON 119.75 269.2 (NORTH)
- 132.55 269.2 (SOUTH)
- PHOENIX TOWER 118.7 278.8 (Rwy 8-26)
- 120.9 254.3 (Rwys 7L-25R, 7R-25L)
- PHOENIX DEP CON 126.8 269.6



- NOTE: Restricted to turbojet and turboprop aircraft only.
- NOTE: RADAR and DME required.
- NOTE: Aircraft requesting FL 220 and below must file BLYTHE TRANSITION.
- NOTE: Turbojets landing LAX, file PARKER TRANSITION.
- NOTE: Aircraft landing other than LAX and turboprops landing at LAX: Requesting FL240 and above, file PALMDALE or PALM SPRINGS TRANSITION.

NOTE: Chart not to scale.

(NARRATIVE ON FOLLOWING PAGE)

# BUCKEYE FOUR DEPARTURE

PHOENIX, ARIZONA  
PHOENIX SKY HARBOR INTL (PHX)

SW-4, 08 OCT 2020 to 05 NOV 2020