

WAAS CH 86913 W36A	APP CRS 357°	Rwy Idg 5135 TDZE 8 Apt Elev 8
--	------------------------	---

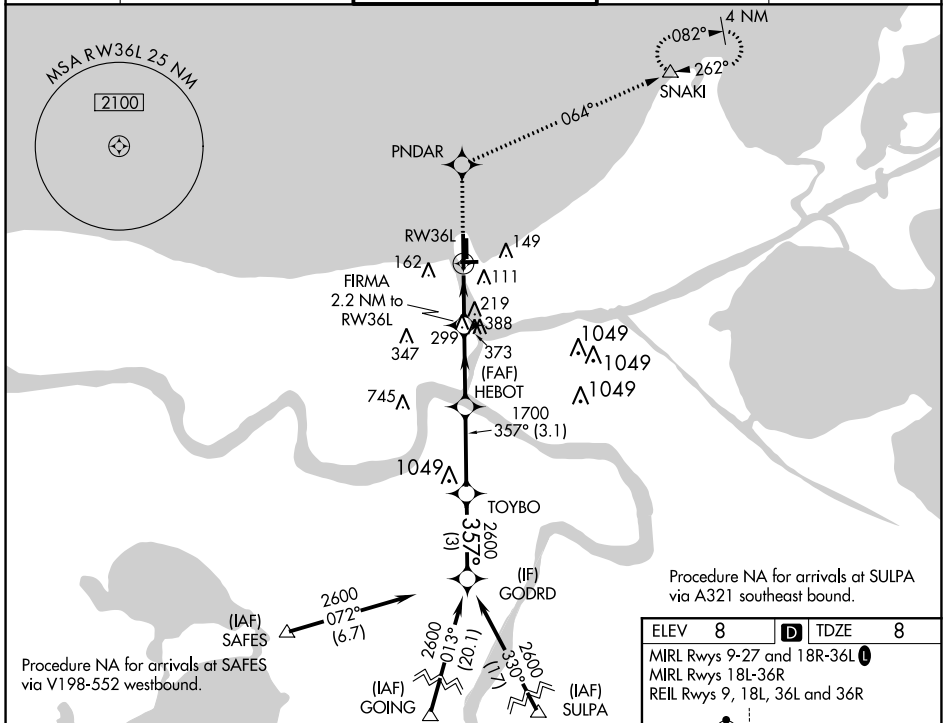
RNAV (GPS) RWY 36L

LAKEFRONT (NEW)

▼ For uncompensated Baro-VNAV systems, LNAV/VNAV NA below -15°C (5°F) or above 49°C (120°F). DME/DME RNP-0.3 NA. When local altimeter setting not received, use Louis Armstrong New Orleans Intl altimeter setting: increase LPV DA to 369 feet, LNAV/VNAV DA to 460 feet and all visibilities ½ mile; increase all MDA 40 feet and Circling Cat D visibility ¼ mile. VDP and Baro-VNAV NA when using Louis Armstrong New Orleans Intl altimeter setting.

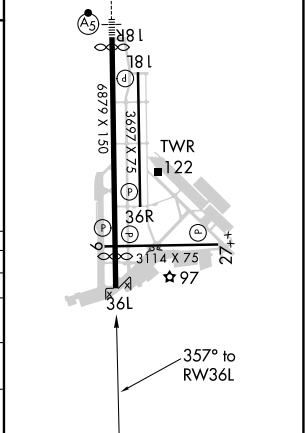
MISSED APPROACH: Climb to 2100 direct PNDAR and via track 064° to SNAKI and hold.

ATIS 124.9	NEW ORLEANS APP CON NORTH 133.15 290.3 SOUTH 123.85 256.9	LAKEFRONT TOWER * 119.9 (CTAF)	GND CON 121.7	CLNC DEL 127.4
----------------------	---	--	-------------------------	--------------------------



2100	PNDAR	tr 064°	SNAKI	Procedure Turn NA
*LNAV only.	FIRMA 2.2 NM to RW36L	HEBOT	TOYBO	GODRD
	*1.7 NM to RW36L		357° 2600	2600
	RW36L		1700	GP 3.00° TCH 50
	1.7 NM	0.5 NM	2.9 NM	3.1 NM
CATEGORY	A	B	C	D
LPV DA		340-1½	332 (400-1½)	
LNAV/VNAV DA		431-1¾	423 (500-1¾)	
LNAV MDA	600-1	592 (600-1)	600-1¾	592 (600-1¾)
CIRCLING	600-1	592 (600-1)	600-1¾	660-2 652 (700-2)

ELEV 8	TDZE 8
MIRL Rwy 9-27 and 18R-36L	
MIRL Rwy 18L-36R	
REIL Rwy 9, 18L, 36L and 36R	



SC-4, 08 OCT 2020 to 05 NOV 2020

SC-4, 08 OCT 2020 to 05 NOV 2020