

LOC/DME I-NEW 111.3 Chan 50	APP CRS 177°	Rwy Idg 5110 TDZE 8 Apt Elev 8
------------------------------------------	------------------------	-----------------------------------------------------------

ILS or LOC RWY 18R

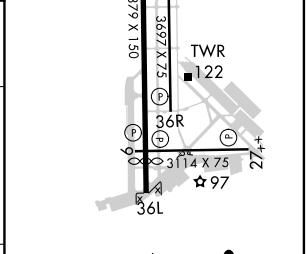
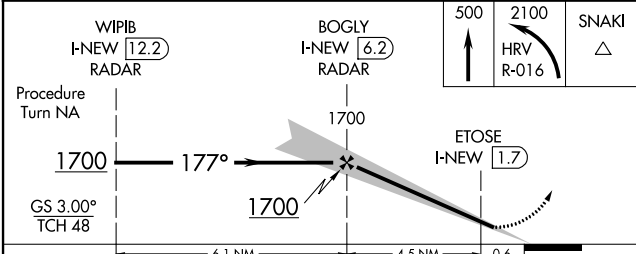
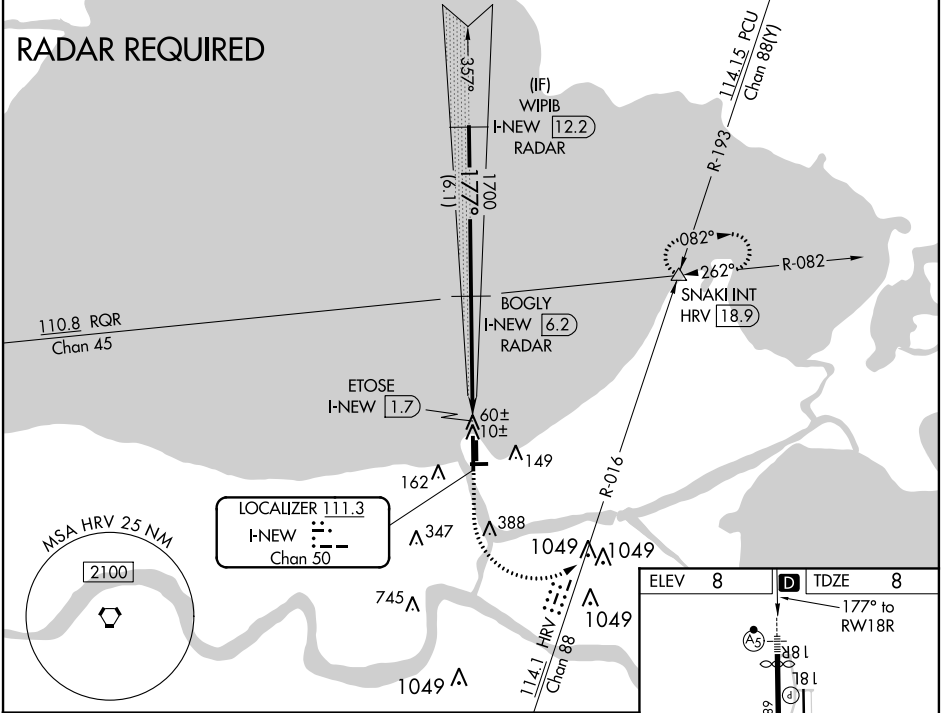
LAKEFRONT (NEW)

⚠ Inoperative table does not apply to S-ILS 18R. For inoperative MALS R when using Louis Armstrong New Orleans Intl altimeter setting, increase S-LOC 18R Cats A-C visibility to 1 mile. For inoperative MALS R, increase S-LOC 18R all Cats visibility to 1 mile. DME or Radar required. Visibility reduction by helicopters NA. When local altimeter setting not received, use Louis Armstrong New Orleans Intl altimeter setting and increase all DA 29 feet and all MDA 40 feet; increase Circling Cat D visibility ¼ mile.

MALS R

MISSED APPROACH: Climb to 500 then climbing left turn to 2100 on HRV VORTAC R-016 to SNAKI INT and hold.

ATIS 124.9	NEW ORLEANS APP CON NORTH 133.15 290.3 SOUTH 123.85 256.9	LAKEFRONT TOWER ★ 119.9 (CTAF)	GND CON 121.7	CLNC DEL 127.4
----------------------	-------------------------------------------------------------------------------	------------------------------------------	-------------------------	--------------------------



CATEGORY	A	B	C	D	MIRL Rwy 9-27 and 18R-36L	
S-ILS 18R		258-¾	250 (300-¾)		MIRL Rwy 18L-36R	
S-LOC 18R		320-¾	312 (400-¾)		REIL Rwy 9, 18L, 36L and 36R	
CIRCLING	460-1	452 (500-1)	520-1½ 512 (600-1½)	660-2 652 (700-2)	FAF to MAP 4.5 NM	
	Knots	60	90	120	150	180
	Min:Sec	4:30	3:00	2:15	1:48	1:30

SC-4, 08 OCT 2020 to 05 NOV 2020

SC-4, 08 OCT 2020 to 05 NOV 2020