

RNAV (GPS) RWY 2

LAS VEGAS MUNI (LVS)

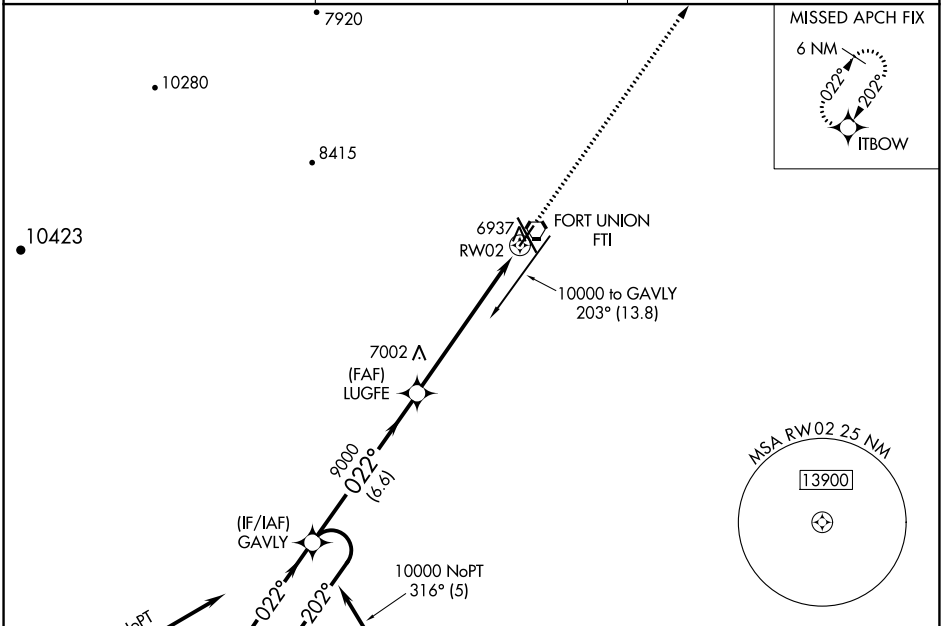
APP CRS 022°	Rwy Idg 5006
	TDZE 6870
	Apt Elev 6877

▼ DME/DME RNP-0.3 NA.
▲ Inoperative table does not apply to Cat C.
 If local altimeter setting not received, use Santa Fe Muni altimeter setting and increase all MDAs 200 feet.



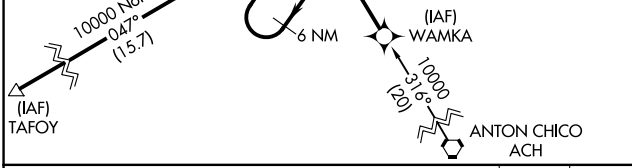
MISSED APPROACH: Climb to 10000 direct ITBOW and hold.

ASOS 118.525	ALBUQUERQUE CENTER 132.8 346.35	UNICOM 122.8 (CTAF) 0
------------------------	---	---------------------------------

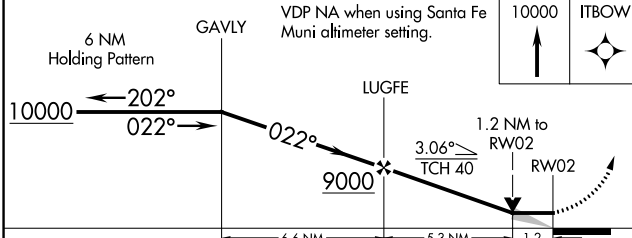
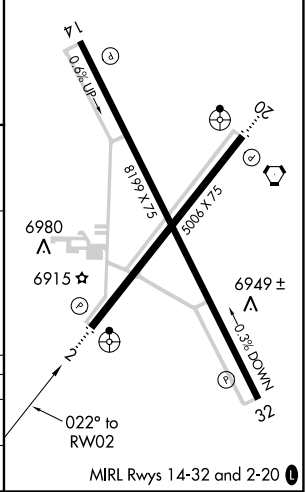


SW-1, 08 OCT 2020 to 05 NOV 2020

SW-1, 08 OCT 2020 to 05 NOV 2020



ELEV 6877	TDZE 6870
-----------	-----------



CATEGORY	A	B	C	D
LNVA MDA	7280-3/4	410 (500-3/4)	7280-1 1/4 410 (500-1 1/4)	NA
CIRCLING	7400-1 523 (600-1)	7420-1 543 (600-1)	7420-1 1/2 543 (600-1 1/2)	NA