

# RNAV (GPS) RWY 21

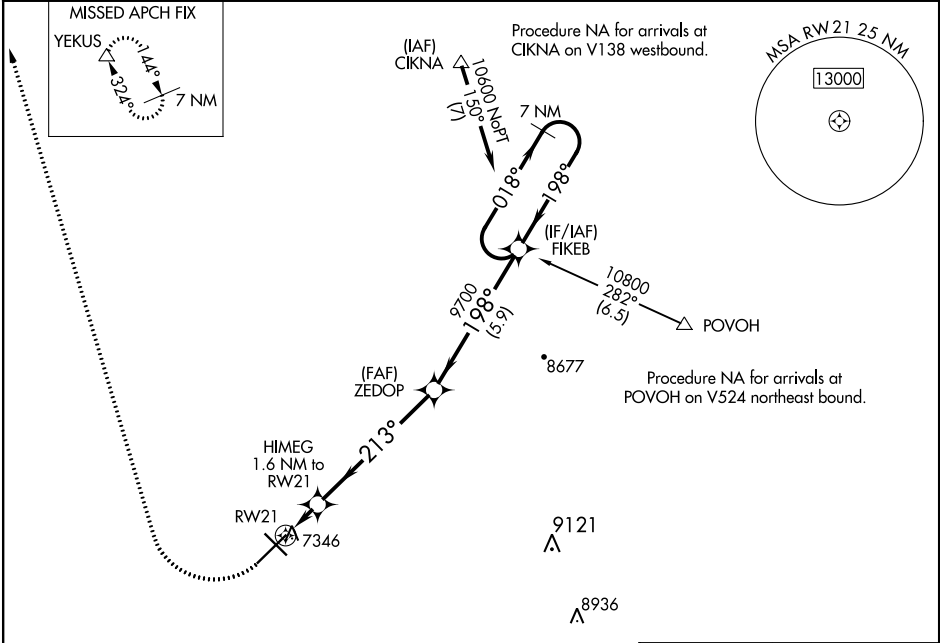
LARAMIE RGNL (L.A.R.)

WAAS CH <b>72825</b> <b>W21A</b>	APP CRS <b>213°</b>	Rwy Idg TDZE Apt Elev	<b>8502</b> <b>7277</b> <b>7284</b>
--	------------------------	-----------------------------	---

**⚠** Circling to Rwy 30 NA at night.  
Baro-VNAV NA.  
**❄** -35°C DME/DME RNP-0.3 NA.

**MISSED APPROACH:** Climbing right turn to 9400 direct YEKUS and hold.

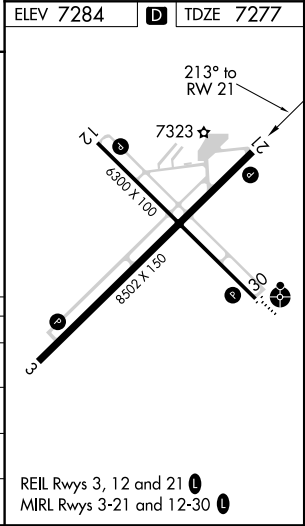
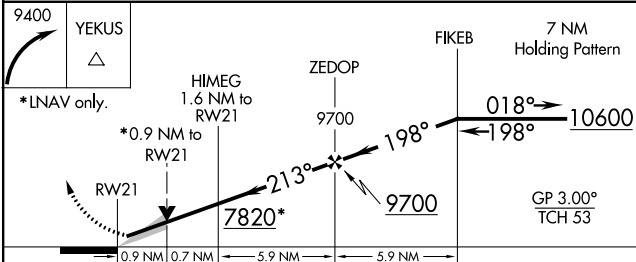
ASOS <b>135.475</b>	DENVER CENTER <b>125.9 284.7</b>	UNICOM <b>123.05</b> (CTAF) <b>📻</b>
------------------------	-------------------------------------	---



NW-1, 08 OCT 2020 to 05 NOV 2020

NW-1, 08 OCT 2020 to 05 NOV 2020

ELEV <b>7284</b>	<b>D</b> TDZE <b>7277</b>
------------------	---------------------------



CATEGORY	A	B	C	D
LPV DA		7527-3/4	250 (300-3/4)	
LNAV/VNAV DA		7527-3/4	250 (300-3/4)	
LNAV MDA		7600-1	323 (400-1)	
CIRCLING	7660-1 376 (400-1)	7740-1 456 (500-1)	7740-1 1/2 456 (500-1 1/2)	7840-2 556 (500-2)

REIL Rwy 3, 12 and 21 **📻**  
MIRL Rwy 3-21 and 12-30 **📻**