

BLUBELL FOUR ARRIVAL

HOUSTON, TEXAS

SC-5, 08 OCT 2020 to 05 NOV 2020

ARRIVAL ROUTE DESCRIPTION

COLLEGE STATION TRANSITION (CLL.BLUBL4):
From over CLL VORTAC on CLL R-153 to BLUBL. Thence

ELIVR TRANSITION (ELVVR.BLUBL4): From over ELIVR on CLL R-334 to CLL VORTAC, then on CLL R-153 to BLUBL. Thence

JAYJO TRANSITION (JAYJO.BLUBL4): From over JAYJO on TNV R-266 to BLUBL. Thence

LEONA TRANSITION (LOA.BLUBL4): From over LOA VORTAC on LOA R-209 and CLL R-029 to CLL VORTAC, then on CLL R-153 to BLUBL. Thence

ILANO TRANSITION (ILO.BLUBL4): From over ILO VORTAC on ILO R-087 and CLL R-268 to CLL VORTAC, then on CLL R-153 to BLUBL. Thence

. From over BLUBL on CLL R-153 to cross **SNDAY** at 9000, from **SNDAY** fly heading 153°. Expect vectors to final approach course at or prior to **SNDAY**.

CHAMBERS COUNTY

BAYTOWN

LA PORTE MUNI

WILLIAM P. HOBBY

SUGAR LAND RGNL

HOUSTON-SOUTHWEST

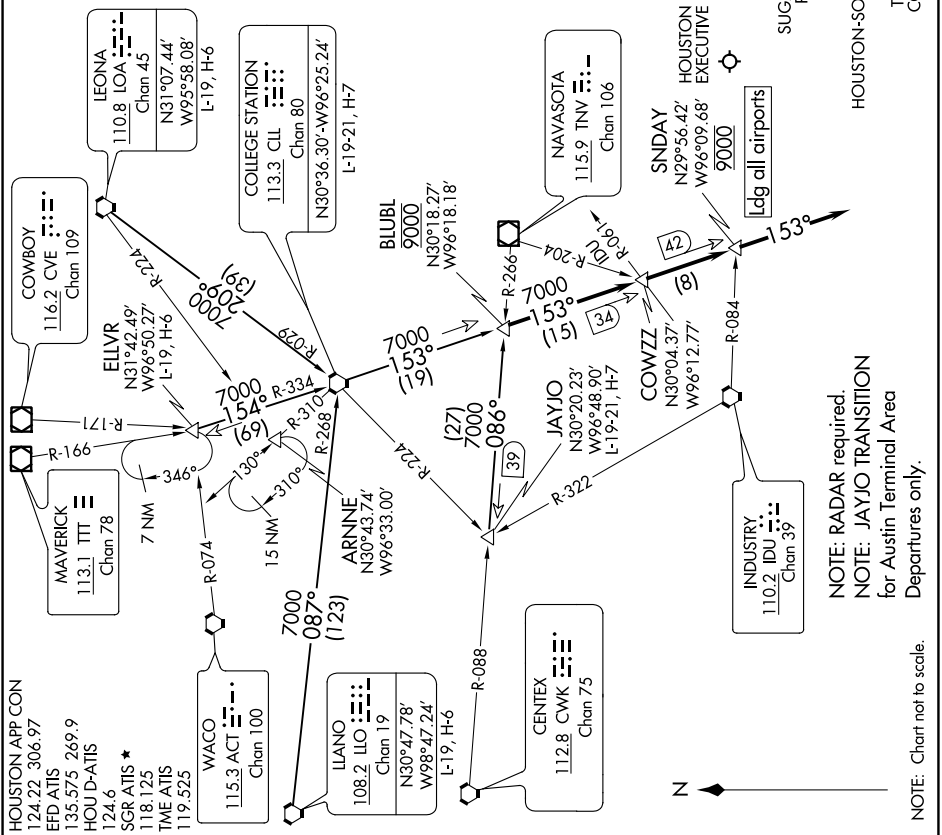
TEXAS GULF COAST RGNL

PEARLAND RGNL

SCHOLES INTL AT GALVESTON

ELINGTON

RWJ AIRPARK



SC-5, 08 OCT 2020 to 05 NOV 2020

BLUBELL FOUR ARRIVAL

HOUSTON, TEXAS