

VORTAC HLN 117.7 Chan 124	APP CRS 266°	Rwy Idg TDZE Apt Elev N/A N/A 3877
---	------------------------	--

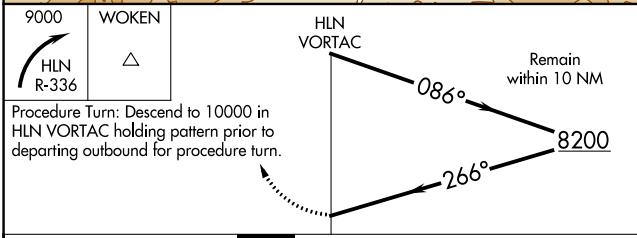
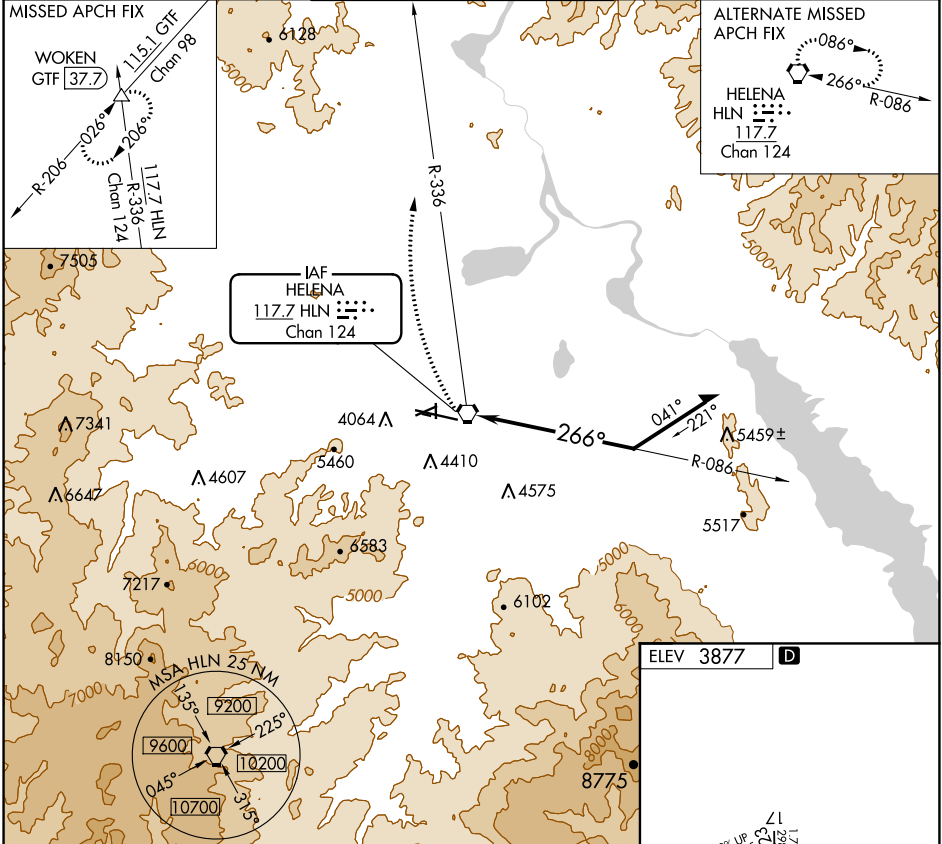
VOR-A

HELENA RGNL (HLN)

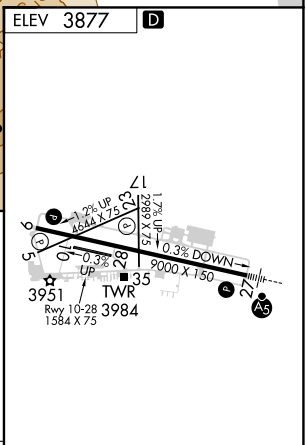
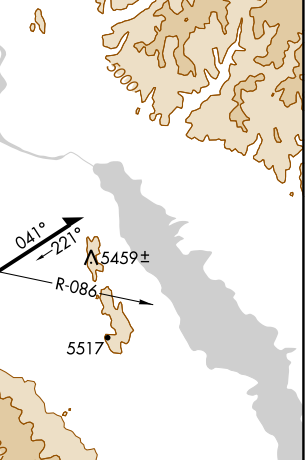
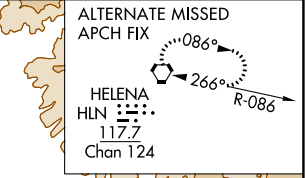
⚠ Circling NA for Cat D south of Rwy 9-27.
⚠ Night Landing: Rwy 5, 23, 35 NA.
⚠ -17°C Helicopter visibility reduction below 1 SM NA.

MISSED APPROACH: Climbing right turn to 9000 via HLN VORTAC R-336 to WOKEN INT and hold.

ATIS 120.4	HELENA APP CON* 119.5 229.4	HELENA TOWER* 118.3 (CTAF) 257.8	GND CON 121.9	UNICOM 122.95
----------------------	---------------------------------------	--	-------------------------	-------------------------



9000	WOKEN	HLN VORTAC	8200
HLN R-336	△		
Procedure Turn: Descend to 10000 in HLN VORTAC holding pattern prior to departing outbound for procedure turn.			
CATEGORY	A	B	C D
C CIRCLING	6700-1¼ 2823 (2900-1¼)	6700-1½ 2823 (2900-1½)	6700-3 2823 (2900-3)



REIL Rws 9, 13 and 35
 MIRL Rws 5-23 and 17-35
 HIRL Rwy 9-27

NW-1, 08 OCT 2020 to 05 NOV 2020

NW-1, 08 OCT 2020 to 05 NOV 2020