


RNAV (RNP) Z RWY 27

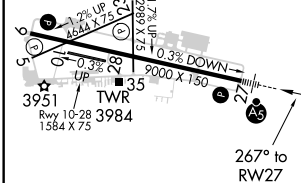
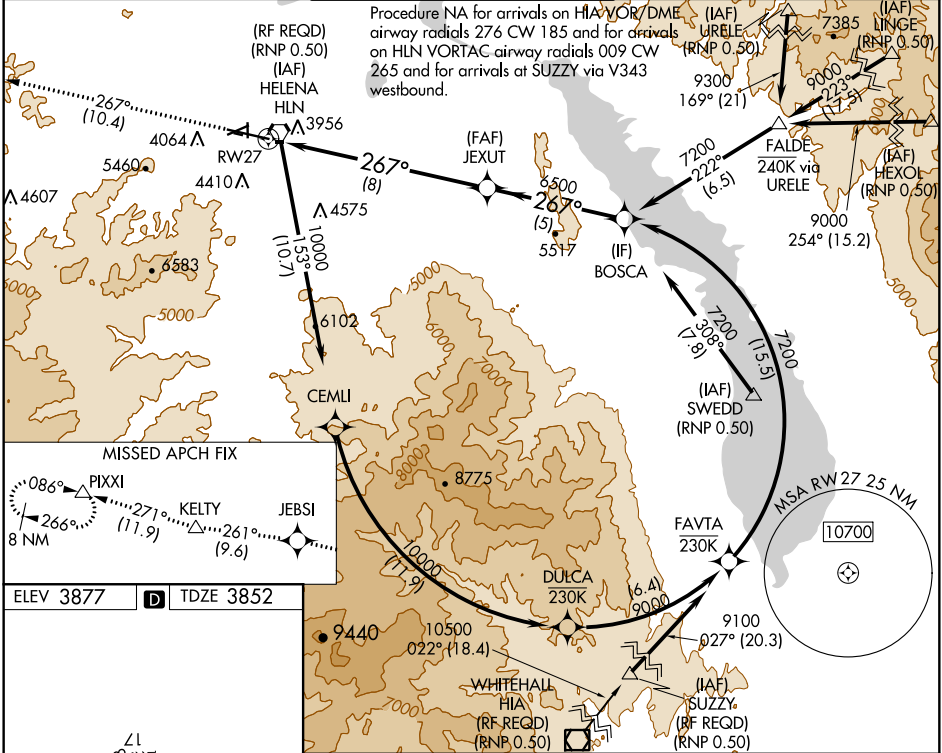
HELENA RGNL (HLN)

APP CRS 267°	Rwy Idg 9000
	TDZE 3852
	Apt Elev 3877

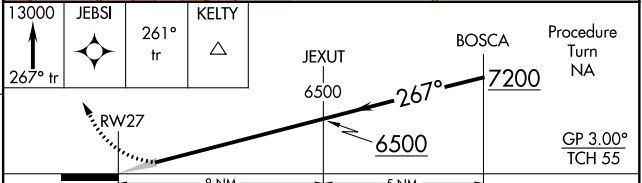
GPS required. For uncompensated Baro-VNAV systems, procedure NA below -22°C (-7°F) or above 41°C (105°F). *Missed approach requires minimum climb of 295 feet per NM to 7900. #Missed approach requires minimum climb of 290 feet per NM to 7300. †Missed approach requires minimum climb of 405 feet per NM to 6300. For inoperative MALSR, increase RNP 0.18* visibility to 1, RNP 0.22# visibility to 1 1/4, and RNP 0.30† visibility to 1 1/2. Inoperative table does not apply to RNP 0.30.

MALSRL

MISSED APPROACH: Climb to 13000 via 267° track to JEBSI, and via 261° track to KELTY, and via 271° track to PIXXI and hold, continue climb-in-hold to 13000.

ATIS 120.4	HELENA APP CON * 119.5 229.4	HELENA TOWER * 118.3 (CTAF) 257.8	GND CON 121.9	UNICOM 122.95
----------------------	--	---	-------------------------	-------------------------



ELEV 3877	TDZE 3852
REIL Rwy 9, 17 and 35	
MIRL Rwy 5-23 and 17-35	
HIRL Rwy 9-27	



CATEGORY	A	B	C	D
RNP 0.18 DA*		41 19-1/2	267 (300-1/2)	
RNP 0.22 DA#		42 12-3/4	360 (400-3/4)	
RNP 0.30 DA†		42 87-1	435 (500-1)	
RNP 0.30 DA		48 63-4	1011 (1000-4)	

NW-1, 08 OCT 2020 to 05 NOV 2020

NW-1, 08 OCT 2020 to 05 NOV 2020