

| | | |
|-------------|----------|-------------|
| APP CRS | Rwy Idg | 8000 |
| 224° | TDZE | 937 |
| | Apt Elev | 955 |

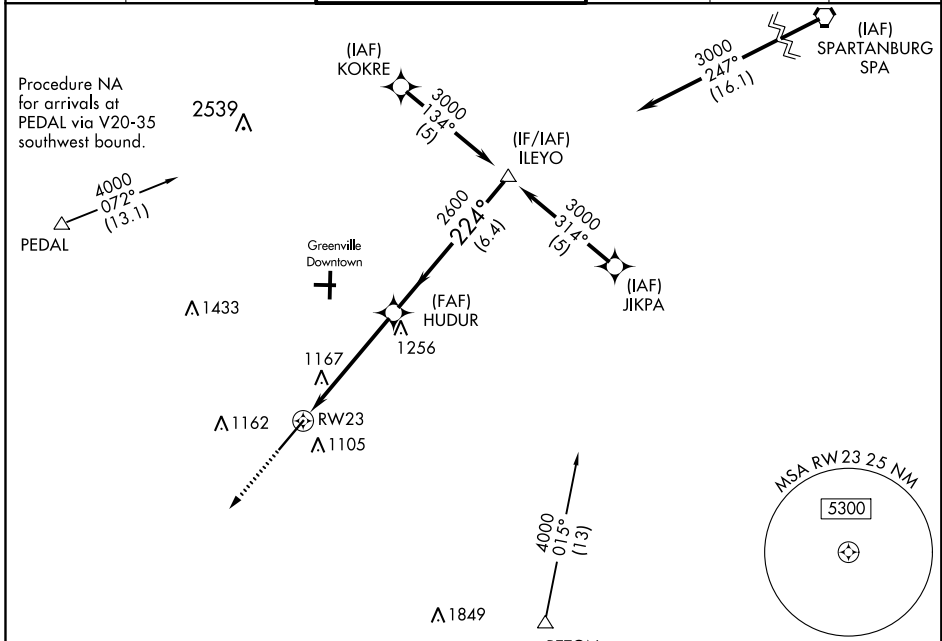
RNAV (GPS) RWY 23

DONALDSON FIELD (GYH)

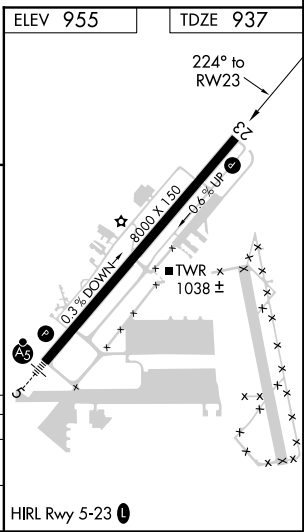
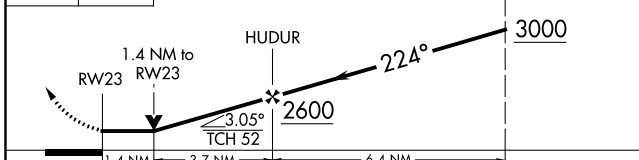
NA If local altimeter setting not received, use Greer altimeter setting and increase all MDAs 40 feet. VDP NA when using Greer altimeter setting. Helicopter visibility reduction below 3/4 statute mile NA. DME/DME RNP-0.3 NA.

MISSED APPROACH: Climb to 3000 direct NINYI and hold.

| | | | | | |
|--------------------------|---|--|-------------------------|--------------------------|------------------------|
| AWOS-3 127.325 | GREER APP CON ★ 118.8 270.275 | DONALDSON TOWER ★ 133.325 (CTAF) 0 269.25 | GND CON 121.4 | CLNC DEL 121.4 | UNICOM 122.7 |
|--------------------------|---|--|-------------------------|--------------------------|------------------------|



3000 NINYI VGS1 and descent angles not coincident (VGS1 Angle 4.14/TCH 95). Procedure Turn NA



| CATEGORY | A | B | C | D |
|----------|--------|-------------|-------------------------|-------------------------|
| RNAV MDA | 1420-1 | 483 (500-1) | 1420-1½ 483 (500-1½) | 1420-1½ 483 (500-1½) |
| CIRCLING | 1420-1 | 465 (500-1) | 1480-1½ 525 (600-1½) | 1520-2 565 (600-2) |

SE-2, 08 OCT 2020 to 05 NOV 2020

SE-2, 08 OCT 2020 to 05 NOV 2020