

GOLDSBORO, NORTH CAROLINA

TACAN Y RWY 26

TACAN	GSB Chan 112	APCH CRS 261°	Rwy ldg 11,760 TDZE 109 Arprt Elev 109
-------	---------------------	----------------------	---

AL-169 [USAF]

SEYMOUR JOHNSON AFB (KGSB)

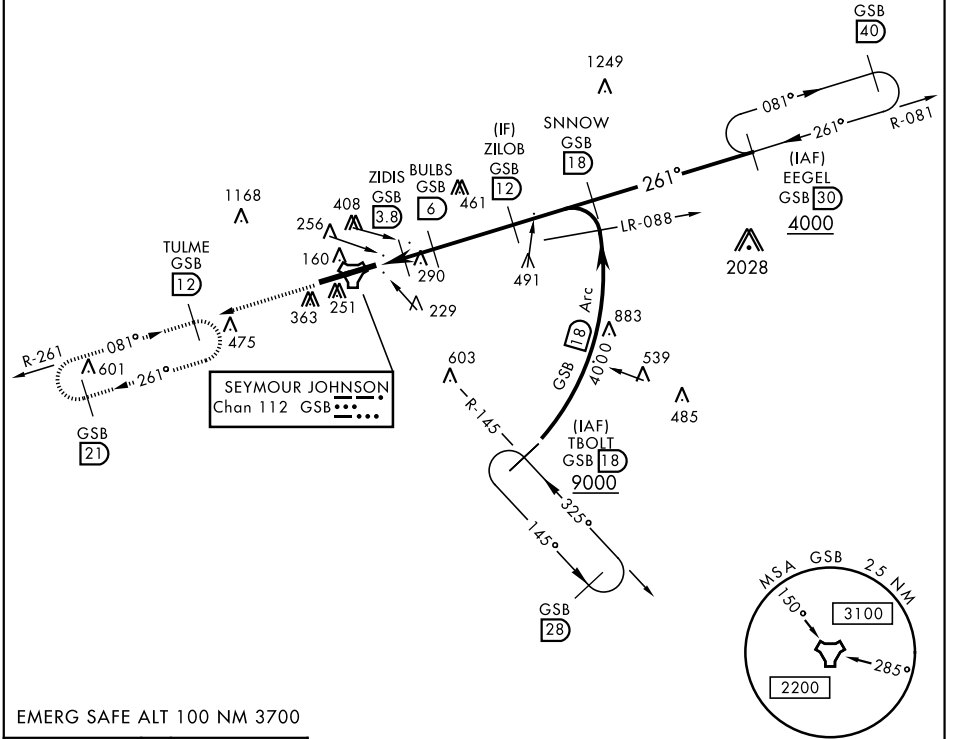
▼ * When ALS inop, increase CAT AB RVR to 55, vis to 1 mile, CAT CDE vis to 1½ miles.
** Circling N of Rwy 8-26 not authorized.

ALSF-1



MISSED APPROACH: Climb to 2200 via GSB R-261 to TULME and hold.

ATIS ★ 317.625	SEYMOUR JOHNSON APP CON 258°-110° 123.7 290.9 111°-257° 119.7 273.6	SEYMOUR JOHNSON TOWER ★ 126.25 370.875	GND CON 138.1 275.8	CLNC DEL 128.025 270.8
--------------------------	---	--	-------------------------------	----------------------------------

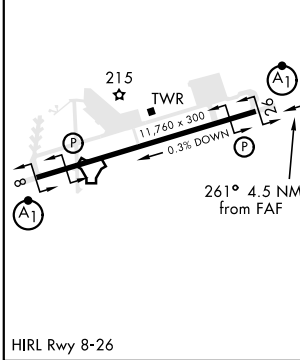


SE-2, 08 OCT 2020 to 05 NOV 2020

SE-2, 08 OCT 2020 to 05 NOV 2020

EMERG SAFE ALT 100 NM 3700

ELEV 109	TDZE 109
----------	----------



2200 GSB R-261	TULME R-261 GSB 12	† BULBS to COMOZ	SNNOW R-081 GSB 18	EEGEL R-081 GSB 30	
TACAN	COMOZ 2.1	ZIDIS 3.8	BULBS 6	ZILOB 12	
	880	1600	2500	4000	
	0.6 NM	1.7 NM	2.2 NM		
CATEGORY	A	B	C	D	E
S-26 *	540/24	431 (500-½)	540/40	431 (500-¾)	
☐ CIRCLING **	620-1	511 (600-1)	680-1½ 571 (600-1½)	700-2 591 (600-2)	760-2¼ 651 (700-2¼)

GOLDSBORO, NORTH CAROLINA

35° 20'N-77° 58'W

SEYMOUR JOHNSON AFB (KGSB)

Amdt 7 05DEC19

TACAN Y RWY 26