

14317

# SEYMOUR-THREE DEPARTURE (GSB3•GSB)

SEYMOUR JOHNSON AFB (KGSB)

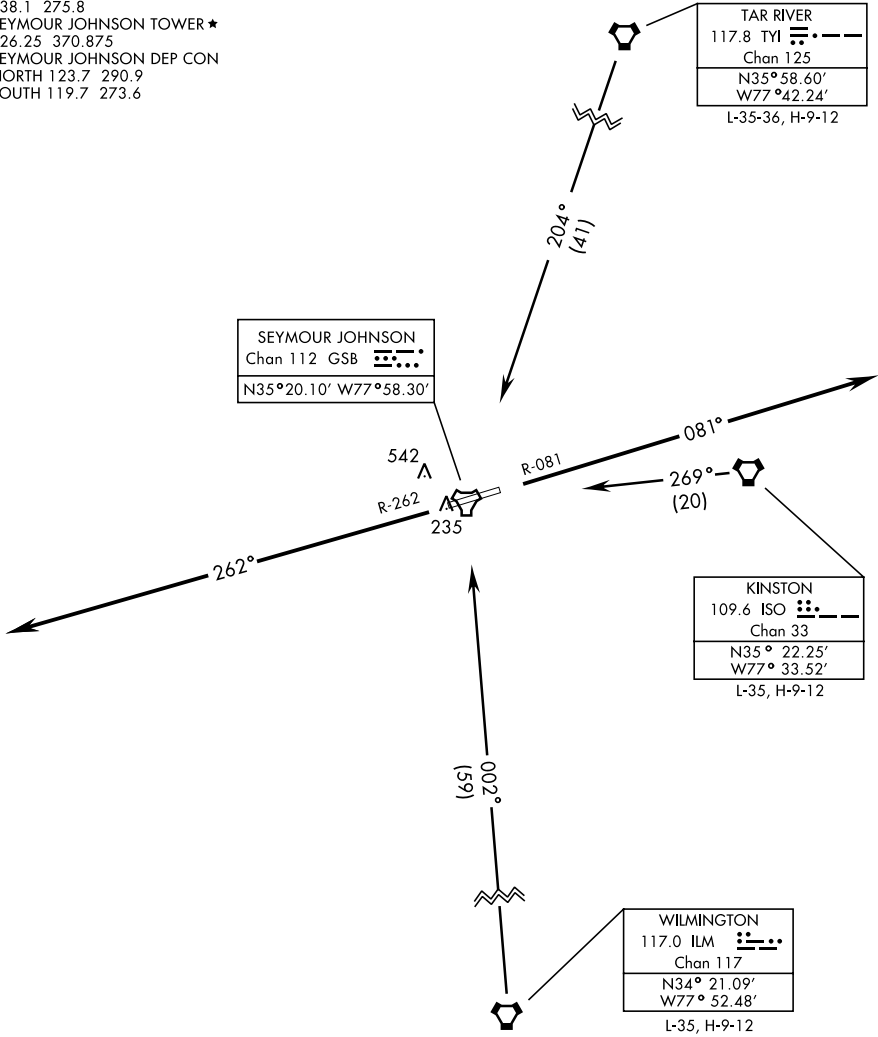
GOLDSBORO, NORTH CAROLINA

ATIS★ 317.625  
 CLNC DEL  
 128.025 270.8  
 GND CON  
 138.1 275.8  
 SEYMOUR JOHNSON TOWER★  
 126.25 370.875  
 SEYMOUR JOHNSON DEP CON  
 NORTH 123.7 290.9  
 SOUTH 119.7 273.6

SHL-169 [USAF]

Rwy	Knots	60	120	180	240	300	360
26	V/V(fpm)	210	420	630	840	1050	1260

Minimum Climb Rate to 500



SE-2, 08 OCT 2020 to 05 NOV 2020

SE-2, 08 OCT 2020 to 05 NOV 2020

## DEPARTURE ROUTE DESCRIPTION

**TAKE-OFF RWY 8:** Track outbound on GSB R-081 until passing 2500', then turn right/left on course climbing to assigned altitude.

**TAKE-OFF RWY 26:** Track outbound on GSB R-262 until passing 2500', then turn right/left on course climbing to assigned altitude.

# SEYMOUR-THREE DEPARTURE (GSB3•GSB)

GOLDSBORO, NORTH CAROLINA

SEYMOUR JOHNSON AFB (KGSB)