

WAAS CH 70710 W09A	APP CRS 088°	Rwy Idg TDZE Apt Elev	6502 147 147
--	------------------------	-----------------------------	---

RNAV (GPS) RWY 9

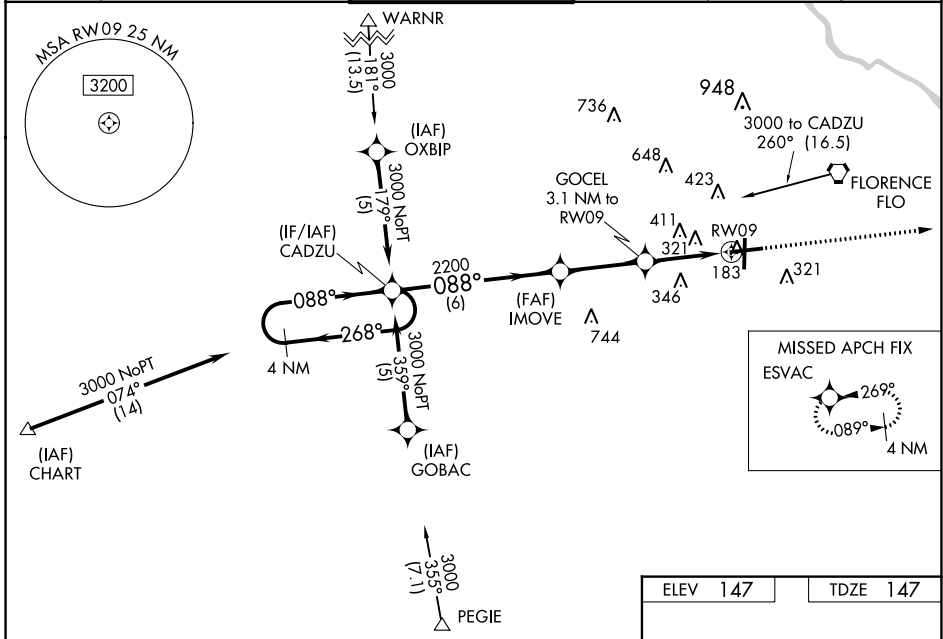
FLORENCE RGNL (F'L O)

⚠ Night landing: Rwy 1, 19 NA. For uncompensated Baro-VNAV systems, LNAV/VNAV NA below -15°C (5°F) or above 49°C (120°F). DME/DME RNP-0.3 NA. When local altimeter setting not received, use Darlington altimeter setting and increase LPV DA to 489 feet, LNAV/VNAV DA to 695 feet and all visibilities to 1¼ miles; increase all MDA 60 feet and LNAV Cat C visibility ¼ mile. For inoperative MALSR when using Darlington altimeter setting, increase LPV all Cats visibility to 1¼ mile. Baro-VNAV and VDP NA when using Darlington altimeter setting.



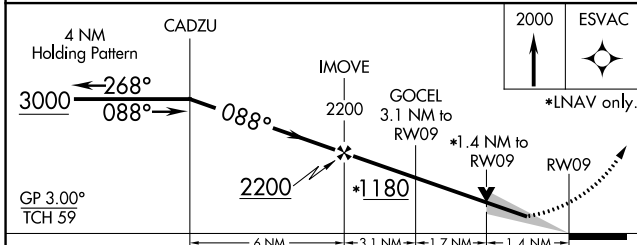
MISSED APPROACH:
Climb to 2000 direct
ESVAC and hold.

ATIS 123.625	FLORENCE APP CON* 118.6 341.7 135.25 316.15 <small>(256°-074°) (075°-255°)</small>	FLORENCE TOWER* 125.1 (CTAF) 0 353.85	GND CON 121.9 353.85	CLNC DEL 121.9 353.85	UNICOM 122.95
------------------------	---	---	--------------------------------	---------------------------------	-------------------------

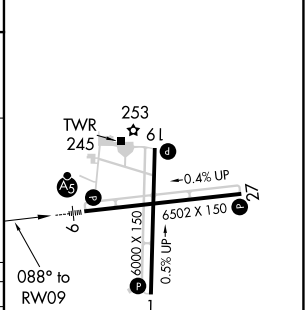


SE-2, 08 OCT 2020 to 05 NOV 2020

SE-2, 08 OCT 2020 to 05 NOV 2020



ELEV 147	TDZE 147
----------	----------



CATEGORY	A	B	C	D
LPV DA	441-½		294 (300-½)	
LNAV/VNAV DA	623-1¼		476 (500-1¼)	
LNAV MDA	660-½	513 (600-½)	660-1 513 (600-1)	660-1¼ 513 (600-1¼)
CIRCLING	660-1	513 (600-1)	660-1½ 513 (600-½)	740-2 593 (600-2)

REIL Rwy 1, 19 and 27 **⓪**
HIRL Rwy 9-27 **⓪**